

WATERSOUND CAMP CREEK - PHASE 2B

A PLANNED UNIT DEVELOPMENT

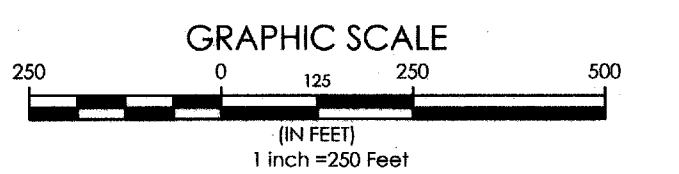
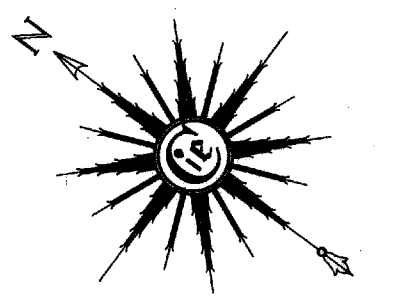
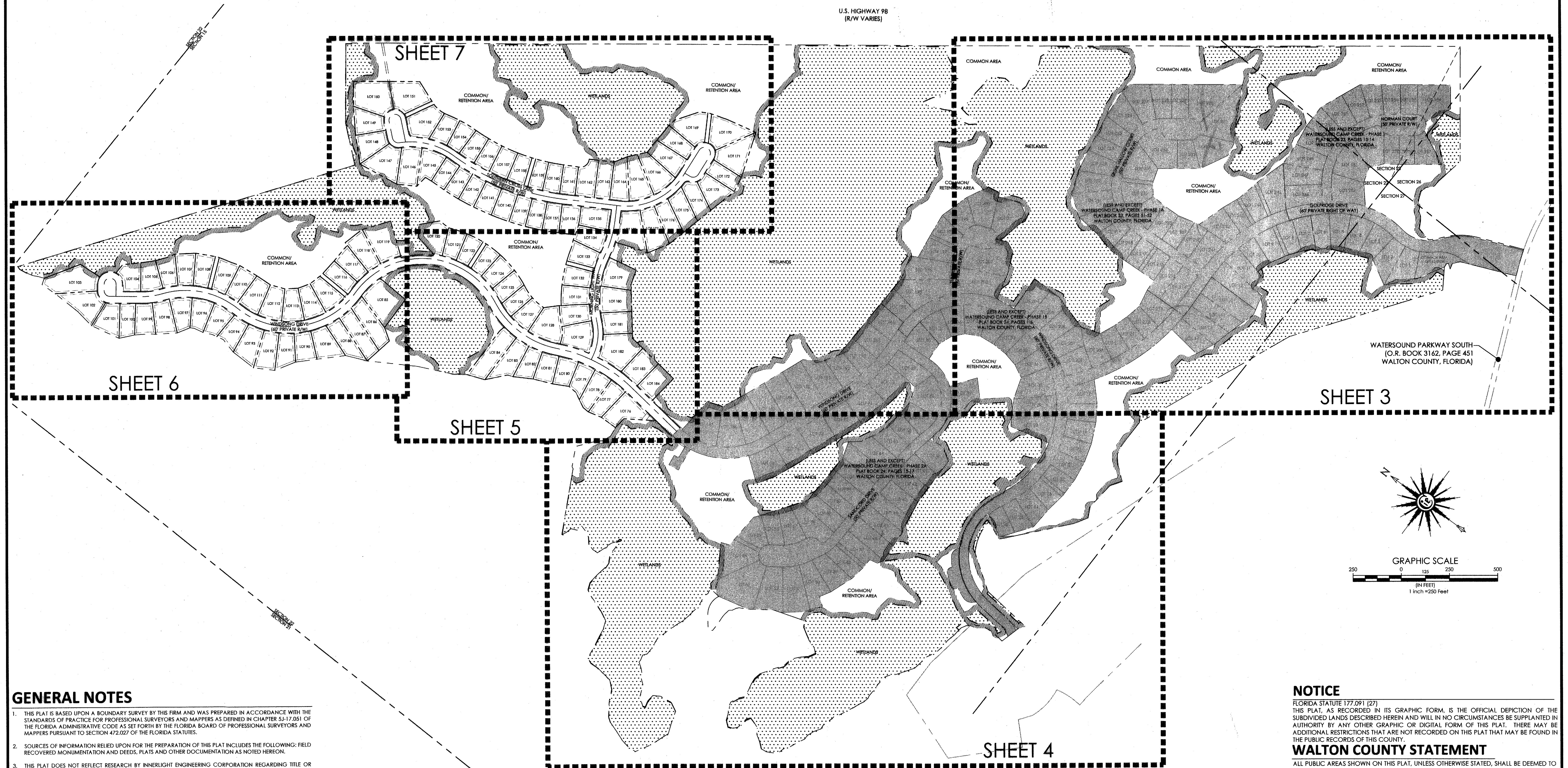
SITUATED IN SECTION 22, 23, 26, & 27 - TOWNSHIP 3 SOUTH - RANGE 18 WEST

WALTON COUNTY, FLORIDA

SHEET INDEX:

- 1 - DEDICATIONS, CERTIFICATIONS, DESCRIPTION
- 2 - KEY SHEET
- 3 - BOUNDARY LOCATION INFORMATION
- 4 - BOUNDARY LOCATION INFORMATION
- 5 - BOUNDARY LOCATION INFORMATION
- 6 - BOUNDARY LOCATION INFORMATION
- 7 - BOUNDARY LOCATION INFORMATION
- 8 - LESS AND EXCEPT LOCATION INFORMATION
- 9 - WETLAND BUFFER LOCATION INFORMATION
- 10 - WETLAND BUFFER LOCATION INFORMATION
- 11 - WETLAND BUFFER LOCATION INFORMATION
- 12 - WETLAND BUFFER LOCATION INFORMATION

U.S. HIGHWAY 98
(R/W VARIES)



GENERAL NOTES

1. THIS PLAT IS BASED UPON A BOUNDARY SURVEY BY THIS FIRM AND WAS PREPARED IN ACCORDANCE WITH THE STANDARDS OF PRACTICE FOR PROFESSIONAL SURVEYORS AND MAPPERS AS DEFINED IN CHAPTER 5J-17.051 OF THE FLORIDA ADMINISTRATIVE CODE AS SET FORTH BY THE FLORIDA BOARD OF PROFESSIONAL SURVEYORS AND MAPPERS PURSUANT TO SECTION 472.027 OF THE FLORIDA STATUTES.
2. SOURCES OF INFORMATION RELIED UPON FOR THE PREPARATION OF THIS PLAT INCLUDES THE FOLLOWING: FIELD RECOVERED MONUMENTATION AND DEEDS, PLATS AND OTHER DOCUMENTATION AS NOTED HEREON.
3. THIS PLAT DOES NOT REFLECT RESEARCH BY INNERLIGHT ENGINEERING CORPORATION REGARDING TITLE OR EASEMENT. THERE MAY EXIST: DEEDS OF RECORD, UNRECORDED DEEDS, PLATS, UNRECORDED PLATS, EASEMENTS, RIGHTS-OF-WAYS, OR OTHER INSTRUMENTS THAT MAY AFFECT THIS PARCEL.
4. NORTH AND THE BEARINGS DEPICTED HEREON ARE BASED UPON THE STATE PLANE COORDINATE SYSTEM - FLORIDA NORTH ZONE, NORTH AMERICAN DATUM OF 1983 (NAD83) UTILIZING THE TRIMBLE ACCESS GPS NETWORK.
5. NO UNDERGROUND INSTALLATIONS OR IMPROVEMENTS INCLUDING, BUT NOT LIMITED TO, UTILITIES, FOUNDATIONS, FOOTERS, HUMAN BURIAL SITES, AND CEMETERIES, WERE LOCATED, EXCEPT AS SHOWN.
6. ALL LOT LINES DEPICTED HEREON ARE NON-RADIAL (N.R.) UNLESS OTHERWISE NOTED.
7. FEDERAL EMERGENCY MANAGEMENT AGENCY (F.E.M.A.), FLOOD INSURANCE RATE MAP (F.I.R.M.) 12131C0716H, BEING PANEL 716 OF 738, EFFECTIVE DATE OF DECEMBER 30, 2020, INDICATES THAT THE SUBJECT PARCEL IS LOCATED IN ZONES "X" AND "A". NO CERTIFICATIONS ARE MADE REGARDING THE ACCURACY OF SAID F.I.R.M.
8. BUILDING SETBACKS ARE AS FOLLOWS: FRONT: 10', SIDE: 5' SIDE (WITH DRAINAGE EASEMENT); 10', REAR (ABUTTING OTHER LOTS); 10', AND REAR (ABUTTING OPEN SPACE); 5' PER THE APPROVED DEVELOPMENT ORDER.
9. ELEVATIONS SHOWN HEREON ARE BASED ON THE NORTH AMERICAN VERTICAL DATUM OF 1988 (NAVD 88), UTILIZING THE TRIMBLE ACCESS GPS NETWORK.
10. WETLAND BUFFERS SHOWN HEREON ARE TO REMAIN INTACT, UNCLEARED AND UNDISTURBED.
11. MINIMUM FINISHED FLOOR ELEVATIONS SHOWN HEREON ARE BASED ON A GRADING AND DRAINAGE PLAN PROVIDED BY KIMLEY HORN DATED JULY OF 2019.
12. BASE FLOOD ELEVATIONS SHOWN HEREON ARE BASED ON A FLOOD STUDY PREPARED BY KIMLEY HORN DATED JANUARY OF 2019.

ABBREVIATIONS

| R/W | RIGHT-OF-WAY |
|------|--|
| N | NORTH |
| S | SOUTH |
| E | EAST |
| W | WEST |
| LB | LICENSED BUSINESS |
| MFEE | MINIMUM FINISHED FLOOR ELEVATION |
| " | DEGREES WHEN USED IN A BEARING OR ANGLE |
| " | MINUTES WHEN USED IN A BEARING OR ANGLE |
| " | SECONDS WHEN USED IN A BEARING OR ANGLE |
| " | FEET OR DECIMAL THEREOF WHEN USED IN A DIMENSION |
| " | INCHES WHEN USED IN A DIMENSION |
| ± | MORE OR LESS |
| BSL | BUILDING SETBACK LINE |
| UTE | UTILITY EASEMENT |
| CL | CHORD LENGTH |
| CB | CHORD BEARING |
| BFE | BASE FLOOD ELEVATION |
| L | ARC LENGTH |

LEGEND

| | |
|---|--|
| ● | PERMANENT REFERENCE MONUMENT (PRM) SET 1/2" IRON PIN (PRM 7927) |
| ○ | PERMANENT CONTROL POINT (PCP) SET NAIL & DISK (PCP 7927) |
| ● | PERMANENT REFERENCE MONUMENT (PRM) FOUND 1/2" IRON PIN (PRM 7927) |
| ● | FOUND 1" CAPPED IRON PIN (SSMC LB 2108) (STAMPED PRM) |
| ▨ | WETLANDS |
| ▨ | 25' WETLAND BUFFER |
| ▨ | LESS AND EXCEPT |

NOTICE

FLORIDA STATUTE 177.091 (27)
THIS PLAT, AS RECORDED IN ITS GRAPHIC FORM, IS THE OFFICIAL DEPICTION OF THE SUBDIVIDED LANDS DESCRIBED HEREIN AND WILL IN NO CIRCUMSTANCES BE SUPPLANTED IN AUTHORITY BY ANY OTHER GRAPHIC OR DIGITAL FORM OF THIS PLAT. THERE MAY BE ADDITIONAL RESTRICTIONS THAT ARE NOT RECORDED ON THIS PLAT THAT MAY BE FOUND IN THE PUBLIC RECORDS OF THIS COUNTY.

WALTON COUNTY STATEMENT

ALL PUBLIC AREAS SHOWN ON THIS PLAT, UNLESS OTHERWISE STATED, SHALL BE DEEMED TO HAVE BEEN DEDICATED TO THE PUBLIC FOR THE USES AND PURPOSES HEREON STATED. HOWEVER, NOTHING HEREIN SHALL BE CONSTRUED AS CREATING AN OBLIGATION UPON WALTON COUNTY TO PERFORM ANY ACT OF CONSTRUCTION OR MAINTENANCE WITHIN SUCH DEDICATED AREAS, EXCEPT WHEN THE OBLIGATION IS VOLUNTARILY ACCEPTED BY THE GOVERNING BODY OF WALTON COUNTY, FLORIDA. THE MERE RECORDING OF THIS PLAT DOES NOT CONSTITUTE ACCEPTANCE FOR ANY ACT OF CONSTRUCTION OR MAINTENANCE.

INNERLIGHT ENGINEERING CORPORATION
THINK SOLVE SERVE
THE APPLIED SCIENCE OF SUCCESS
11490 EMERALD COAST PARKWAY, SUITE 2W
MIRAMAR BEACH | FLORIDA | 32250
LB#7927 | TELEPHONE: 850.424.5855

WATERSOUND CAMP CREEK - PHASE 2B

WATERSOUND CAMP CREEK - PHASE 2B

A PLANNED UNIT DEVELOPMENT

SITUATED IN SECTION 22, 23, 26, & 27 - TOWNSHIP 3 SOUTH - RANGE 18 WEST

WALTON COUNTY, FLORIDA

U.S. HIGHWAY 98
(R/W VARIES)

PLAT BOOK 24, PAGE 73

SHEET INDEX:

- 1 - DEDICATIONS, CERTIFICATIONS, DESCRIPTION
- 2 - KEY SHEET
- 3 - BOUNDARY LOCATION INFORMATION
- 4 - BOUNDARY LOCATION INFORMATION
- 5 - BOUNDARY LOCATION INFORMATION
- 6 - BOUNDARY LOCATION INFORMATION
- 7 - BOUNDARY LOCATION INFORMATION
- 8 - LESS AND EXCEPT LOCATION INFORMATION
- 9 - WETLAND BUFFER LOCATION INFORMATION
- 10 - WETLAND BUFFER LOCATION INFORMATION
- 11 - WETLAND BUFFER LOCATION INFORMATION
- 12 - WETLAND BUFFER LOCATION INFORMATION

ABBREVIATIONS

| R/W | RIGHT-OF-WAY |
|------|--|
| N | NORTH |
| S | SOUTH |
| E | EAST |
| W | WEST |
| LB | LICENSED BUSINESS |
| MFFE | MINIMUM FINISHED FLOOR ELEVATION |
| ° | DEGREES WHEN USED IN A BEARING OR ANGLE |
| ' | MINUTES WHEN USED IN A BEARING OR ANGLE |
| " | SECONDS WHEN USED IN A BEARING OR ANGLE |
| ± | FEET OR DECIMAL THEREOF WHEN USED IN A DIMENSION |
| ± | INCHES WHEN USED IN A DIMENSION |
| ± | MORE OR LESS |
| BSL | BUILDING SETBACK LINE |
| UTE | UTILITY EASEMENT |
| CL | CHORD LENGTH |
| CB | CHORD BEARING |
| BFE | BASE FLOOD ELEVATION |
| L | ARC LENGTH |

LEGEND

- PERMANENT REFERENCE MONUMENT (PRM)
SET 1/2" IRON PIN (PRM 7927)
- PERMANENT CONTROL POINT (PCP)
SET NAIL & DISK (PCP 7927)
- PERMANENT REFERENCE MONUMENT (PRM)
FOUND 1/2" IRON PIN (PRM 7927)
- FOUND 1" CAPPED IRON PIN (SSMC LB 2108)
(STAMPED PRM)
- WETLANDS
- 25' WETLAND BUFFER
- LESS AND EXCEPT

ST JOE TIMBERLAND COMPANY
26-35-18-16000-001-0050
(UNPLATTED)

WATERSOUND PARKWAY SOUTH
(O.R. BOOK 3162, PAGE 451
WALTON COUNTY, FLORIDA)

NOTICE

FLORIDA STATUTE 177.091 (27)
THIS PLAT, AS RECORDED IN ITS GRAPHIC FORM, IS THE OFFICIAL DEPICTION OF THE SUBDIVIDED LANDS DESCRIBED HEREIN AND WILL IN NO CIRCUMSTANCES BE SUPPLANTED IN AUTHORITY BY ANY OTHER GRAPHIC OR DIGITAL FORM OF THIS PLAT. THERE MAY BE ADDITIONAL RESTRICTIONS THAT ARE NOT RECORDED ON THIS PLAT THAT MAY BE FOUND IN THE PUBLIC RECORDS OF THIS COUNTY.

WALTON COUNTY STATEMENT

ALL PUBLIC AREAS SHOWN ON THIS PLAT, UNLESS OTHERWISE STATED, SHALL BE DEEMED TO HAVE BEEN DEDICATED TO THE PUBLIC FOR THE USES AND PURPOSES HEREON STATED. HOWEVER, NOTHING HEREIN SHALL BE CONSTRUED AS CREATING AN OBLIGATION UPON WALTON COUNTY TO PERFORM ANY ACT OF CONSTRUCTION OR MAINTENANCE WITHIN SUCH DEDICATED AREAS, EXCEPT WHEN THE OBLIGATION IS VOLUNTARILY ACCEPTED BY THE GOVERNING BODY OF WALTON COUNTY, FLORIDA. THE MERE RECORDING OF THIS PLAT DOES NOT CONSTITUTE ACCEPTANCE FOR ANY ACT OF CONSTRUCTION OR MAINTENANCE.

INNERLIGHT ENGINEERING CORPORATION
THE APPLIED SCIENCE OF SUCCESS
11490 EMERALD COAST PARKWAY, SUITE 2W
MIRAMAR BEACH | FLORIDA | 32550
LB#7927 | TELEPHONE: 850.424.5855

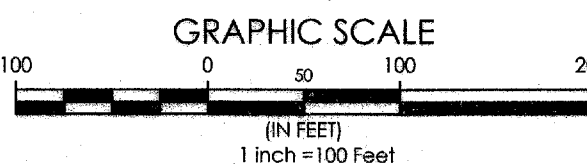
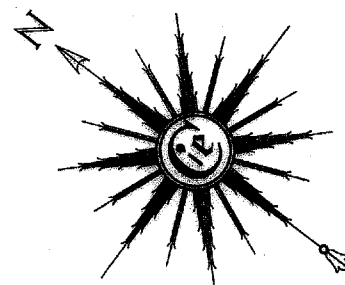
WATERSOUND CAMP CREEK - PHASE 2B

PLAT BOOK 24, PAGE 73

SHEET 3 OF 12

GENERAL NOTES

1. THIS PLAT IS BASED UPON A BOUNDARY SURVEY BY THIS FIRM AND WAS PREPARED IN ACCORDANCE WITH THE STANDARDS OF PRACTICE FOR PROFESSIONAL SURVEYORS AND MAPPERS AS DEFINED IN CHAPTER 53-17.051 OF THE FLORIDA ADMINISTRATIVE CODE AS SET FORTH BY THE FLORIDA BOARD OF PROFESSIONAL SURVEYORS AND MAPPERS PURSUANT TO SECTION 472.027 OF THE FLORIDA STATUTES.
2. SOURCES OF INFORMATION RELIED UPON FOR THE PREPARATION OF THIS PLAT INCLUDES THE FOLLOWING: FIELD RECOVERED MONUMENTATION AND DEEDS, PLATS AND OTHER DOCUMENTATION AS NOTED HEREON.
3. THIS PLAT DOES NOT REFLECT RESEARCH BY INNERLIGHT ENGINEERING CORPORATION REGARDING TITLE OR EASEMENT. THERE MAY EXIST; DEEDS OF RECORD, UNRECORDED DEEDS, PLATS, UNRECORDED PLATS, EASEMENTS, RIGHTS-OF-WAYS, OR OTHER INSTRUMENTS THAT MAY AFFECT THIS PARCEL.
4. NORTH AND THE BEARINGS DEPICTED HEREON ARE BASED UPON THE STATE PLANE COORDINATE SYSTEM - FLORIDA NORTH ZONE, NORTH AMERICAN DATUM OF 1983 (NAD83) UTILIZING THE TRIMBLE ACCESS GPS NETWORK.
5. NO UNDERGROUND INSTALLATIONS OR IMPROVEMENTS INCLUDING, BUT NOT LIMITED TO, UTILITIES, FOUNDATIONS, FOOTERS, HUMAN BURIAL SITES, AND CEMETERIES, WERE LOCATED, EXCEPT AS SHOWN.
6. ALL LOT LINES DEPICTED HEREON ARE NON-RADIAL (N.R.), UNLESS OTHERWISE NOTED.
7. FEDERAL EMERGENCY MANAGEMENT AGENCY (F.E.M.A.), FLOOD INSURANCE RATE MAP (F.I.R.M.), 12131C0716H, BEING PANEL 716 OF 738, EFFECTIVE DATE OF DECEMBER 30, 2020, INDICATES THAT THE SUBJECT PARCEL IS LOCATED IN ZONES "X" AND "A"; NO CERTIFICATIONS ARE MADE REGARDING THE ACCURACY OF SAID F.I.R.M.
8. BUILDING SETBACKS ARE AS FOLLOWS: FRONT: 10'; SIDE: 5'; SIDE (WITH DRAINAGE EASEMENT): 10'; REAR (ABUTTING OTHER LOTS): 10'; AND REAR (ABUTTING OPEN SPACE): 5' PER THE APPROVED DEVELOPMENT ORDER.
9. ELEVATIONS SHOWN HEREON ARE BASED ON THE NORTH AMERICAN VERTICAL DATUM OF 1988 (NAVD 88), UTILIZING THE TRIMBLE ACCESS GPS NETWORK.
10. WETLAND BUFFERS SHOWN HEREON ARE TO REMAIN INTACT, UNCLEARED AND UNDISTURBED.
11. MINIMUM FINISHED FLOOR ELEVATIONS SHOWN HEREON ARE BASED ON A GRADING AND DRAINAGE PLAN PROVIDED BY KIMLEY HORN DATED JULY OF 2019.
12. BASE FLOOD ELEVATIONS SHOWN HEREON ARE BASED ON A FLOOD STUDY PREPARED BY KIMLEY HORN DATED JANUARY OF 2019.



WATERSOUND CAMP CREEK - PHASE 2B

A PLANNED UNIT DEVELOPMENT

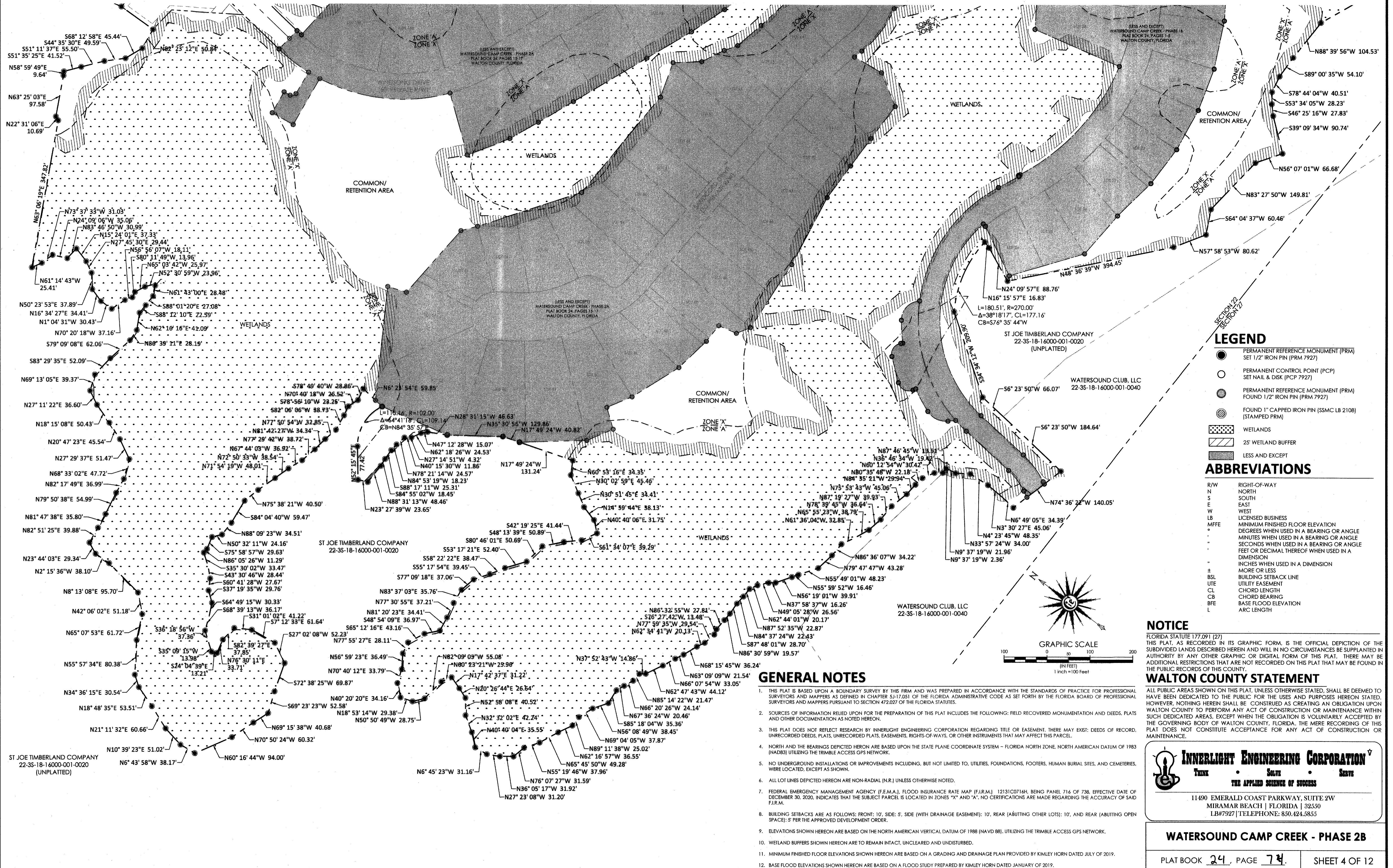
SITUATED IN SECTION 22, 23, 26, & 27 - TOWNSHIP 3 SOUTH - RANGE 18 WEST

WALTON COUNTY, FLORIDA

PLAT BOOK 24, PAGE 74

SHEET INDEX:

- 1 - DEDICATIONS, CERTIFICATIONS, DESCRIPTION
- 2 - KEY SHEET
- 3 - BOUNDARY LOCATION INFORMATION
- 4 - BOUNDARY LOCATION INFORMATION
- 5 - BOUNDARY LOCATION INFORMATION
- 6 - BOUNDARY LOCATION INFORMATION
- 7 - BOUNDARY LOCATION INFORMATION
- 8 - LESS AND EXCEPT LOCATION INFORMATION
- 9 - WETLAND BUFFER LOCATION INFORMATION
- 10 - WETLAND BUFFER LOCATION INFORMATION
- 11 - WETLAND BUFFER LOCATION INFORMATION
- 12 - WETLAND BUFFER LOCATION INFORMATION



WATERSOUND CAMP CREEK - PHASE 2B

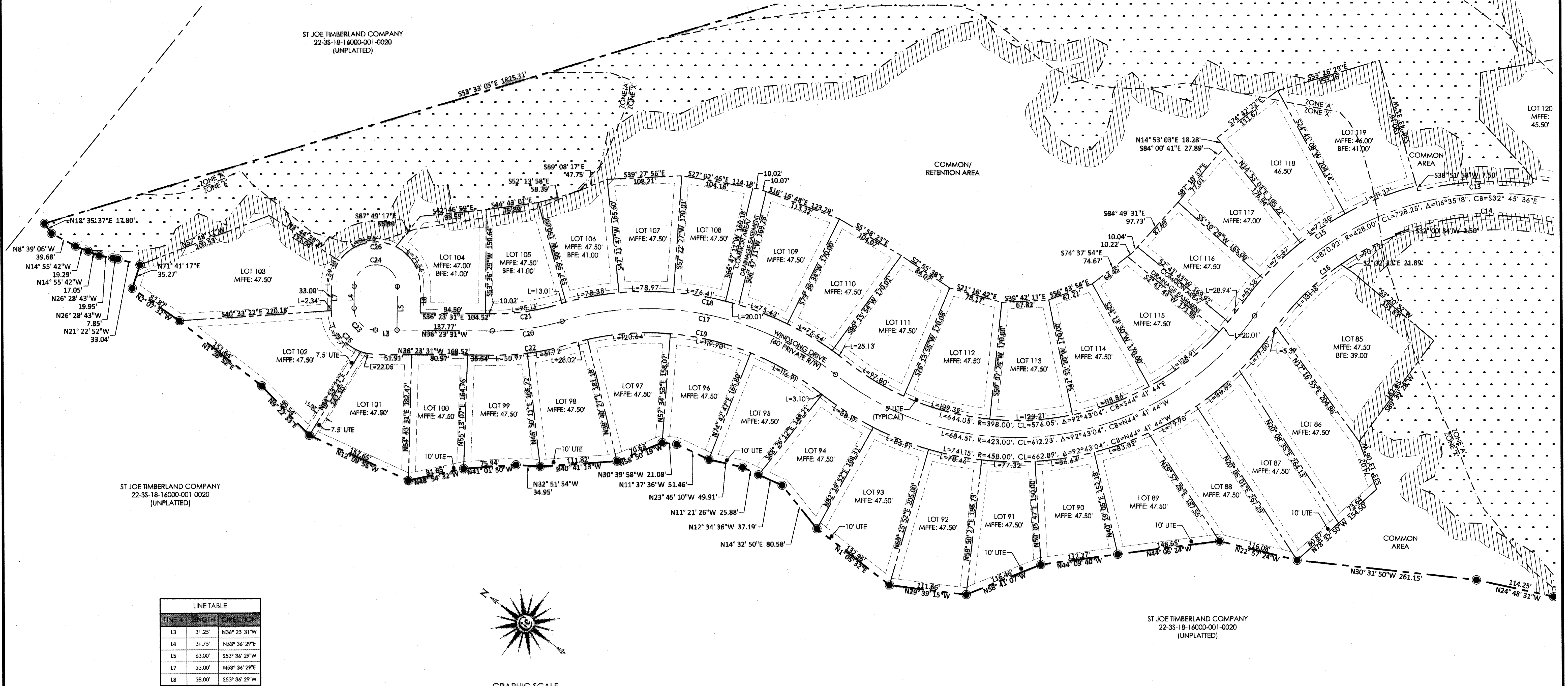
A PLANNED UNIT DEVELOPMENT

SITUATED IN SECTION 22, 23, 26, & 27 - TOWNSHIP 3 SOUTH - RANGE 18 WEST

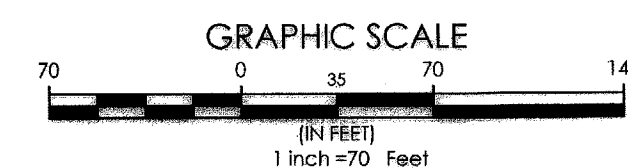
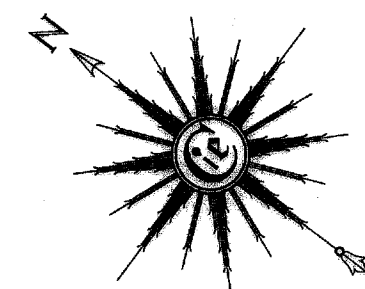
WALTON COUNTY, FLORIDA

SHEET INDEX:

- 1 - DEDICATIONS, CERTIFICATIONS, DESCRIPTION
- 2 - KEY SHEET
- 3 - BOUNDARY LOCATION INFORMATION
- 4 - BOUNDARY LOCATION INFORMATION
- 5 - BOUNDARY LOCATION INFORMATION
- 6 - BOUNDARY LOCATION INFORMATION
- 7 - BOUNDARY LOCATION INFORMATION
- 8 - LESS AND EXCEPT LOCATION INFORMATION
- 9 - WETLAND BUFFER LOCATION INFORMATION
- 10 - WETLAND BUFFER LOCATION INFORMATION
- 11 - WETLAND BUFFER LOCATION INFORMATION
- 12 - WETLAND BUFFER LOCATION INFORMATION



| LINE # | LENGTH | DIRECTION |
|--------|--------|----------------|
| L3 | 31.25' | N36° 23' 31" W |
| L4 | 31.75' | N53° 36' 29" E |
| L5 | 63.00' | S53° 36' 29" W |
| L7 | 33.00' | N53° 36' 29" E |
| L8 | 98.00' | S53° 36' 29" W |



LEGEND

- PERMANENT REFERENCE MONUMENT (PRM)
SET 1/2" IRON PIN (PRM 7927)
- PERMANENT CONTROL POINT (PCP)
SET NAIL & DISK (PCP 7927)
- FOUND 1" CAPPED IRON PIN (SSMC LB 2108)
(STAMPED PRM)
- WETLANDS
- 25' WETLAND BUFFER

ABBREVIATIONS

- | | |
|------|--|
| R/W | RIGHT-OF-WAY |
| N | NORTH |
| S | SOUTH |
| E | EAST |
| W | WEST |
| LB | LICENSED BUSINESS |
| MFFE | MINIMUM FINISHED FLOOR ELEVATION |
| ° | DEGREES WHEN USED IN A BEARING OR ANGLE |
| ' | MINUTES WHEN USED IN A BEARING OR ANGLE |
| " | SECONDS WHEN USED IN A BEARING OR ANGLE |
| ± | FEET OR DECIMAL THEREOF WHEN USED IN A DIMENSION |
| BSL | BUILDING SETBACK LINE |
| UTE | UTILITY EASEMENT |
| CL | CHORD LENGTH |
| CB | CHORD BEARING |
| BFE | BASE FLOOD ELEVATION |
| L | ARC LENGTH |

| CURVE # | LENGTH | RADIUS | DELTA | CHORD DIRECTION | CHORD LENGTH |
|---------|---------|---------|------------|-----------------|--------------|
| C13 | 167.03' | 445.50' | 21°28'52" | S40° 23' 34" E | 166.05' |
| C14 | 271.32' | 395.50' | 39°18'20" | N38° 20' 16" W | 266.03' |
| C15 | 315.62' | 453.00' | 39°55'13" | S71° 05' 39" E | 309.28' |
| C16 | 226.79' | 393.00' | 33°03'49" | N74° 31' 21" W | 223.65' |
| C17 | 418.96' | 437.84' | 54°49'33" | N29° 44' 58" W | 403.16' |
| C18 | 442.88' | 462.84' | 54°49'33" | S29° 44' 58" E | 426.18' |
| C19 | 385.47' | 402.84' | 54°49'33" | N29° 44' 58" W | 370.93' |
| C20 | 102.45' | 350.00' | 16°46'14" | N44° 46' 38" W | 102.08' |
| C21 | 95.13' | 325.00' | 16°46'14" | S44° 46' 38" E | 94.79' |
| C22 | 112.69' | 385.00' | 16°46'14" | N44° 46' 38" W | 112.29' |
| C23 | 49.09' | 31.25' | 90°00'00" | N8° 36' 29" E | 44.19' |
| C24 | 98.17' | 31.25' | 180°00'00" | S36° 23' 31" E | 62.50' |
| C25 | 102.10' | 65.00' | 90°00'00" | N8° 36' 29" E | 91.92' |
| C26 | 202.63' | 64.50' | 180°00'00" | S36° 23' 31" E | 129.00' |

GENERAL NOTES

1. THIS PLAT IS BASED UPON A BOUNDARY SURVEY BY THIS FIRM AND WAS PREPARED IN ACCORDANCE WITH THE STANDARDS OF PRACTICE FOR PROFESSIONAL SURVEYORS AND MAPPERS AS DEFINED IN CHAPTER 5J-17.051 OF THE FLORIDA ADMINISTRATIVE CODE AS SET FORTH BY THE FLORIDA BOARD OF PROFESSIONAL SURVEYORS AND MAPPERS PURSUANT TO SECTION 472.022 OF THE FLORIDA STATUTES.
2. SOURCES OF INFORMATION RELIED UPON FOR THE PREPARATION OF THIS PLAT INCLUDES THE FOLLOWING: FIELD RECOVERED MONUMENTATION AND DEEDS, PLATS AND OTHER DOCUMENTATION AS NOTED HEREON.
3. THIS PLAT DOES NOT REFLECT RESEARCH BY INNERLIGHT ENGINEERING CORPORATION REGARDING TITLE OR EASEMENT. THERE MAY EXIST: DEEDS OF RECORD, UNRECORDED DEEDS, PLATS, UNRECORDED PLATS, EASEMENTS, RIGHTS-OF-WAYS, OR OTHER INSTRUMENTS THAT MAY AFFECT THIS PARCEL.
4. NORTH AND THE BEARINGS DEPICTED HEREON ARE BASED UPON THE STATE PLANE COORDINATE SYSTEM - FLORIDA NORTH ZONE, NORTH AMERICAN DATUM OF 1983 (NAD83) UTILIZING THE TRIMBLE ACCESS GPS NETWORK.
5. NO UNDERGROUND INSTALLATIONS OR IMPROVEMENTS INCLUDING, BUT NOT LIMITED TO, UTILITIES, FOUNDATIONS, FOOTERS, HUMAN BURIAL SITES, AND CEMETERIES, WERE LOCATED, EXCEPT AS SHOWN.
6. ALL LOT LINES DEPICTED HEREON ARE NON-RADIAL (N.R.) UNLESS OTHERWISE NOTED.
7. FEDERAL EMERGENCY MANAGEMENT AGENCY (F.E.M.A.), FLOOD INSURANCE RATE MAP (F.I.R.M.) 12131C0716H, BEING PANEL 716 OF 738, EFFECTIVE DATE OF DECEMBER 30, 2020, INDICATES THAT THE SUBJECT PARCEL IS LOCATED IN ZONES "X" AND "A". NO CERTIFICATIONS ARE MADE REGARDING THE ACCURACY OF SAID F.I.R.M.
8. BUILDING SETBACKS ARE AS FOLLOWS: FRONT: 10'; SIDE: 5'; SIDE (WITH DRAINAGE EASEMENT): 10'; REAR (ABUTTING OTHER LOTS): 10'; AND REAR (ABUTTING OPEN SPACE): 5' PER THE APPROVED DEVELOPMENT ORDER.
9. ELEVATIONS SHOWN HEREON ARE BASED ON THE NORTH AMERICAN VERTICAL DATUM OF 1988 (NAVD 88), UTILIZING THE TRIMBLE ACCESS GPS NETWORK.
10. WETLAND BUFFERS SHOWN HEREON ARE TO REMAIN INTACT, UNCLEARED AND UNDISTURBED.
11. MINIMUM FINISHED FLOOR ELEVATIONS SHOWN HEREON ARE BASED ON A GRADING AND DRAINAGE PLAN PROVIDED BY KIMLEY HORN DATED JULY OF 2019.
12. BASE FLOOD ELEVATIONS SHOWN HEREON ARE BASED ON A FLOOD STUDY PREPARED BY KIMLEY HORN DATED JANUARY OF 2019.

NOTICE

FLORIDA STATUTE 177.091 (27)
THIS PLAT, AS RECORDED IN ITS GRAPHIC FORM, IS THE OFFICIAL DEPICTION OF THE SUBDIVIDED LANDS DESCRIBED HEREIN AND WILL IN NO CIRCUMSTANCES BE SUPPLANTED IN AUTHORITY BY ANY OTHER GRAPHIC OR DIGITAL FORM OF THIS PLAT. THERE MAY BE ADDITIONAL RESTRICTIONS THAT ARE NOT RECORDED ON THIS PLAT THAT MAY BE FOUND IN THE PUBLIC RECORDS OF THIS COUNTY.

WALTON COUNTY STATEMENT

ALL PUBLIC AREAS SHOWN ON THIS PLAT, UNLESS OTHERWISE STATED, SHALL BE DEEMED TO HAVE BEEN DEDICATED TO THE PUBLIC FOR THE USES AND PURPOSES HEREON STATED. HOWEVER, NOTHING HEREIN SHALL BE CONSTRUED AS CREATING AN OBLIGATION UPON WALTON COUNTY TO PERFORM ANY ACT OF CONSTRUCTION OR MAINTENANCE WITHIN SUCH DEDICATED AREAS, EXCEPT WHEN THE OBLIGATION IS VOLUNTARILY ACCEPTED BY THE GOVERNING BODY OF WALTON COUNTY, FLORIDA. THE MERE RECORDING OF THIS PLAT DOES NOT CONSTITUTE ACCEPTANCE FOR ANY ACT OF CONSTRUCTION OR MAINTENANCE.

INNERLIGHT ENGINEERING CORPORATION
THE APPLIED SCIENCE OF SUCCESS

11490 EMERALD COAST PARKWAY, SUITE 2W
MIRAMAR BEACH | FLORIDA | 32550
LB#7927 | TELEPHONE: 850.424.5855

WATERSOUND CAMP CREEK - PHASE 2B

WATERSOUND CAMP CREEK - PHASE 2B

A PLANNED UNIT DEVELOPMENT

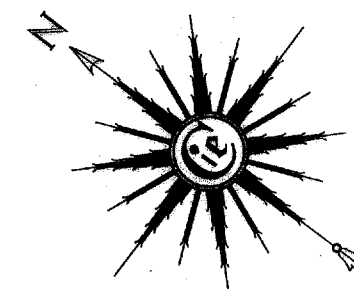
SITUATED IN SECTION 22, 23, 26, & 27 - TOWNSHIP 3 SOUTH - RANGE 18 WEST

WALTON COUNTY, FLORIDA

PLAT BOOK 24, PAGE 76

SHEET INDEX:

- 1 - DEDICATIONS, CERTIFICATIONS, DESCRIPTION
- 2 - KEY SHEET
- 3 - BOUNDARY LOCATION INFORMATION
- 4 - BOUNDARY LOCATION INFORMATION
- 5 - BOUNDARY LOCATION INFORMATION
- 6 - BOUNDARY LOCATION INFORMATION
- 7 - BOUNDARY LOCATION INFORMATION
- 8 - LESS AND EXCEPT LOCATION INFORMATION
- 9 - WETLAND BUFFER LOCATION INFORMATION
- 10 - WETLAND BUFFER LOCATION INFORMATION
- 11 - WETLAND BUFFER LOCATION INFORMATION
- 12 - WETLAND BUFFER LOCATION INFORMATION



GRAPHIC SCALE

1 inch = 40 feet

GENERAL NOTES

1. THIS PLAT IS BASED UPON A BOUNDARY SURVEY BY THIS FIRM AND WAS PREPARED IN ACCORDANCE WITH THE STANDARDS OF PRACTICE FOR PROFESSIONAL SURVEYORS AND MAPPERS AS DEFINED IN CHAPTER 53.17, F.S., OF THE FLORIDA ADMINISTRATIVE CODE AS SET FORTH BY THE FLORIDA BOARD OF PROFESSIONAL SURVEYORS AND MAPPERS PURSUANT TO SECTION 472.022 OF THE FLORIDA STATUTES.
2. SOURCES OF INFORMATION RELIED UPON FOR THE PREPARATION OF THIS PLAT INCLUDES THE FOLLOWING: FIELD RECOVERED MONUMENTATION AND DEEDS, PLATS AND OTHER DOCUMENTATION AS NOTED HEREON.
3. THIS PLAT DOES NOT REFLECT RESEARCH BY INNERLIGHT ENGINEERING CORPORATION REGARDING TITLE OR EASEMENT. THERE MAY EXIST DEEDS OF RECORD, UNRECORDED DEEDS, PLATS, UNRECORDED PLATS, EASEMENTS, RIGHTS-OF-WAYS, OR OTHER INSTRUMENTS THAT MAY AFFECT THIS PARCEL.
4. NORTH AND THE BEARINGS DEPICTED HEREON ARE BASED UPON THE STATE PLANE COORDINATE SYSTEM - FLORIDA NORTH ZONE, NORTH AMERICAN DATUM OF 1983 (NAD83) UTILIZING THE TRIMBLE ACCESS GPS NETWORK.
5. NO UNDERGROUND INSTALLATIONS OR IMPROVEMENTS INCLUDING, BUT NOT LIMITED TO, UTILITIES, FOUNDATIONS, FOOTERS, HUMAN BURIAL SITES, AND CEMETERIES, WERE LOCATED, EXCEPT AS SHOWN.
6. ALL LOT LINES DEPICTED HEREON ARE NON-RADIAL (N.R.) UNLESS OTHERWISE NOTED.
7. FEDERAL EMERGENCY MANAGEMENT AGENCY (F.E.M.A.), FLOOD INSURANCE RATE MAP (F.I.R.M.) 12131C0141, BEING PANEL 71A OF 738, EFFECTIVE DATE OF DECEMBER 30, 2020, INDICATES THAT THE SUBJECT PARCEL IS LOCATED IN ZONES "X" AND "A". NO CERTIFICATIONS ARE MADE REGARDING THE ACCURACY OF SAID F.I.R.M.
8. BUILDING SETBACKS ARE AS FOLLOWS: FRONT: 10'; SIDE (WITH DRAINAGE EASEMENT): 10'; REAR (ABUTTING OTHER LOTS): 10'; AND REAR (ABUTTING OPEN SPACE): 5' PER THE APPROVED DEVELOPMENT ORDER.
9. ELEVATIONS SHOWN HEREON ARE BASED ON THE NORTH AMERICAN VERTICAL DATUM OF 1988 (NAVD 88), UTILIZING THE TRIMBLE ACCESS GPS NETWORK.
10. WETLAND BUFFERS SHOWN HEREON ARE TO REMAIN INTACT, UNCLEARED AND UNDISTURBED.
11. MINIMUM FINISHED FLOOR ELEVATIONS SHOWN HEREON ARE BASED ON A GRADING AND DRAINAGE PLAN PROVIDED BY KIMLEY HORN DATED JULY OF 2019.
12. BASE FLOOD ELEVATIONS SHOWN HEREON ARE BASED ON A FLOOD STUDY PREPARED BY KIMLEY HORN DATED JANUARY OF 2019.

LEGEND

- PERMANENT REFERENCE MONUMENT (PRM)
SET 1/2" IRON PIN (PRM 7927)
- PERMANENT CONTROL POINT (PCP)
SET NAIL & DISK (PCP 7927)
- PERMANENT REFERENCE MONUMENT (PRM)
FOUND 1/2" IRON PIN (PRM 7927)
- FOUND 1" CAPPED IRON PIN (SSMC LB 2108)
(STAMPED PRM)
- WETLANDS
- 25' WETLAND BUFFER
- LESS AND EXCEPT

ABBREVIATIONS

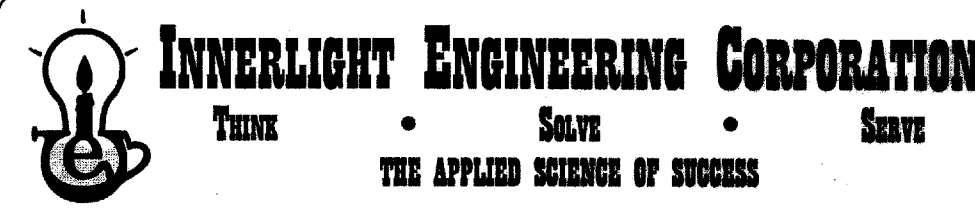
- R/W RIGHT-OF-WAY
- N NORTH
- S SOUTH
- E EAST
- W WEST
- LB LICENSED BUSINESS
- MFFE MINIMUM FINISHED FLOOR ELEVATION
- ° DEGREES WHEN USED IN A BEARING OR ANGLE
- ' MINUTES WHEN USED IN A BEARING OR ANGLE
- " SECONDS WHEN USED IN A BEARING OR ANGLE
- FEET OR DECIMAL THEREOF WHEN USED IN A DIMENSION
- INCHES WHEN USED IN A DIMENSION
- ± MORE OR LESS
- BSL BUILDING SETBACK LINE
- UTE UTILITY EASEMENT
- CL CHORD LENGTH
- CB CHORD BEARING
- L BASE FLOOD ELEVATION
- ARC LENGTH

NOTICE

FLORIDA STATUTE 177.091 (27)
THIS PLAT, AS RECORDED IN ITS GRAPHIC FORM, IS THE OFFICIAL DEPICTION OF THE SUBDIVIDED LANDS DESCRIBED HEREIN AND WILL IN NO CIRCUMSTANCES BE SUPPLIED IN AUTHORITY BY ANY OTHER GRAPHIC OR DIGITAL FORM OF THIS PLAT. THERE MAY BE ADDITIONAL RESTRICTIONS THAT ARE NOT RECORDED ON THIS PLAT THAT MAY BE FOUND IN THE PUBLIC RECORDS OF THIS COUNTY.

WALTON COUNTY STATEMENT

ALL PUBLIC AREAS SHOWN ON THIS PLAT, UNLESS OTHERWISE STATED, SHALL BE DEEMED TO HAVE BEEN DEDICATED TO THE PUBLIC FOR THE USES AND PURPOSES HEREON STATED. HOWEVER, NOTHING HEREIN SHALL BE CONSTRUED AS CREATING AN OBLIGATION UPON WALTON COUNTY TO PERFORM ANY ACT OF CONSTRUCTION OR MAINTENANCE WITHIN SUCH DEDICATED AREAS, EXCEPT WHEN THE OBLIGATION IS VOLUNTARILY ACCEPTED BY THE GOVERNING BODY OF WALTON COUNTY, FLORIDA. THE MERE RECORDING OF THIS PLAT DOES NOT CONSTITUTE ACCEPTANCE FOR ANY ACT OF CONSTRUCTION OR MAINTENANCE.

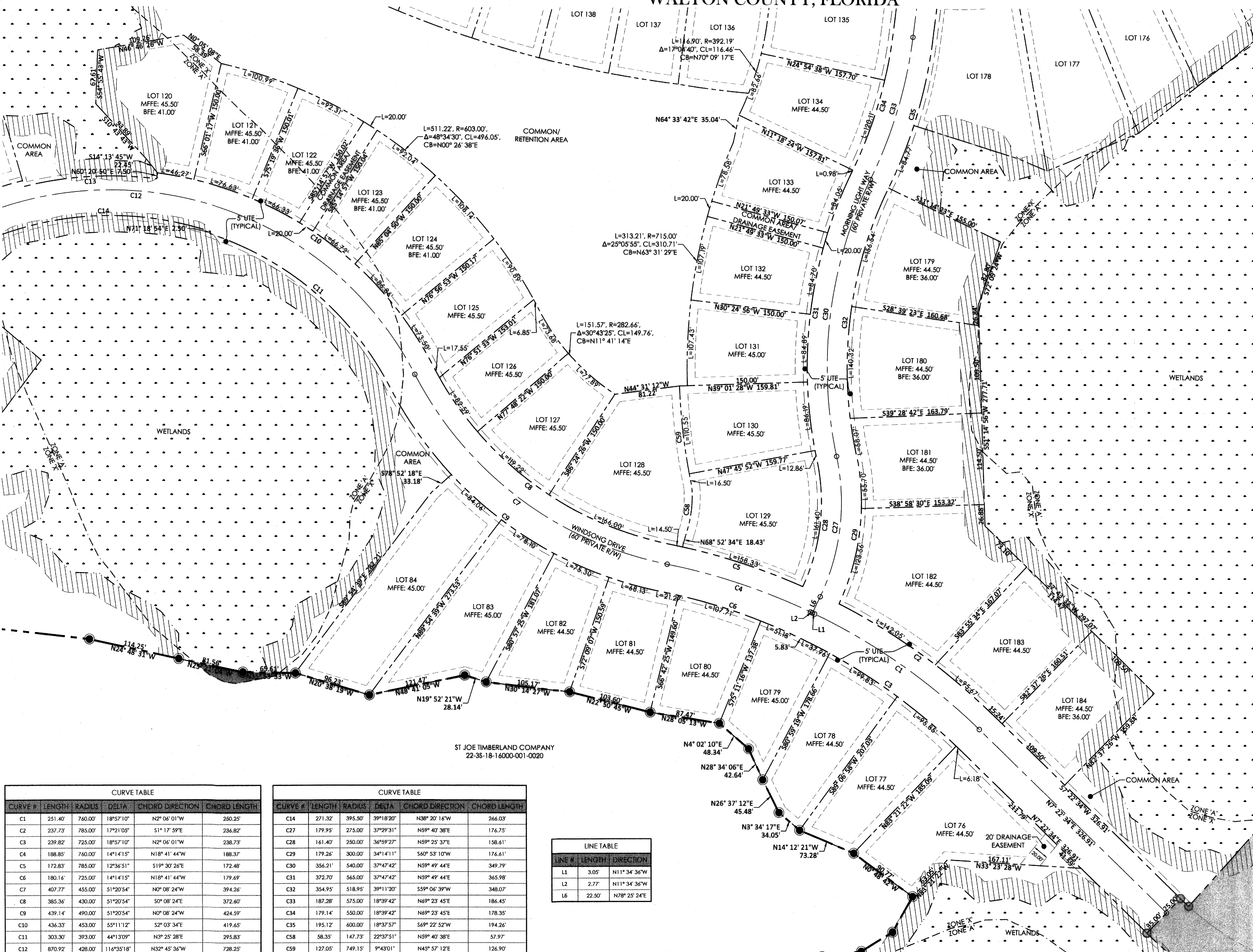


11490 EMERALD COAST PARKWAY, SUITE 2W
MIRAMAR BEACH | FLORIDA | 32530
LB#7927 | TELEPHONE: 850.424.3855

WATERSOUND CAMP CREEK - PHASE 2B

PLAT BOOK 24, PAGE 76

SHEET 5 OF 12



| CURVE TABLE | | | | | |
|-------------|--------|--------|------------|-----------------|--------------|
| CURVE # | LENGTH | RADIUS | DELTA | CHORD DIRECTION | CHORD LENGTH |
| C1 | 251.40 | 760.00 | 18°57'10" | N2° 06' 01"W | 250.25 |
| C2 | 237.73 | 785.00 | 17°21'05" | S1° 17' 59"E | 236.82 |
| C3 | 239.82 | 725.00 | 18°57'10" | N2° 06' 01"W | 238.73 |
| C4 | 188.85 | 760.00 | 14°14'15" | N18° 41' 44"W | 188.37 |
| C5 | 172.83 | 785.00 | 12°36'51" | S19° 30' 28"E | 172.48 |
| C6 | 180.16 | 725.00 | 14°14'15" | N18° 41' 44"W | 179.69 |
| C7 | 407.77 | 455.00 | 51°20'54" | N0° 08' 24"W | 394.26 |
| C8 | 385.36 | 430.00 | 51°20'54" | S0° 08' 24"E | 372.60 |
| C9 | 439.14 | 490.00 | 51°20'54" | N0° 08' 24"W | 424.59 |
| C10 | 436.33 | 453.00 | 55°11'12" | S2° 03' 34"E | 419.65 |
| C11 | 303.30 | 393.00 | 44°13'09" | N3° 25' 28"E | 295.83 |
| C12 | 870.92 | 428.00 | 116°35'18" | N32° 45' 36"W | 728.25 |
| C13 | 167.03 | 445.50 | 21°28'52" | S40° 23' 36"E | 166.05 |

| CURVE TABLE | | | | | |
|-------------|--------|--------|-----------|-----------------|--------------|
| CURVE # | LENGTH | RADIUS | DELTA | CHORD DIRECTION | CHORD LENGTH |
| C14 | 271.32 | 395.50 | 39°18'20" | N38° 20' 14"W | 266.03 |
| C17 | 179.95 | 275.00 | 37°29'31" | N59° 40' 38"E | 176.75 |
| C18 | 161.40 | 250.00 | 36°59'27" | N59° 25' 37"E | 158.61 |
| C19 | 179.26 | 300.00 | 34°14'11" | S40° 53' 10"W | 176.61 |
| C20 | 356.21 | 540.00 | 37°47'42" | N59° 49' 44"E | 349.79 |
| C21 | 372.70 | 565.00 | 37°47'42" | N59° 49' 44"E | 365.98 |
| C22 | 354.95 | 518.95 | 39°11'20" | S59° 06' 39"W | 348.07 |
| C23 | 187.28 | 575.00 | 18°39'42" | N69° 23' 45"E | 186.45 |
| C24 | 179.14 | 550.00 | 18°39'42" | N69° 23' 45"E | 178.35 |
| C25 | 195.12 | 600.00 | 18°37'57" | S69° 22' 52"W | 194.26 |
| C28 | 58.35 | 147.73 | 22°37'51" | N59° 40' 38"E | 57.97 |
| C29 | 127.05 | 749.15 | 9°43'01" | N45° 57' 12"E | 126.90 |

| LINE TABLE | | |
|------------|--------|---------------|
| LINE # | LENGTH | DIRECTION |
| L1 | 3.05 | N11° 34' 36"W |
| L2 | 2.77 | N11° 34' 36"W |
| L6 | 22.50 | N78° 25' 24"E |

WATERSOUND CAMP CREEK - PHASE 2B

A PLANNED UNIT DEVELOPMENT

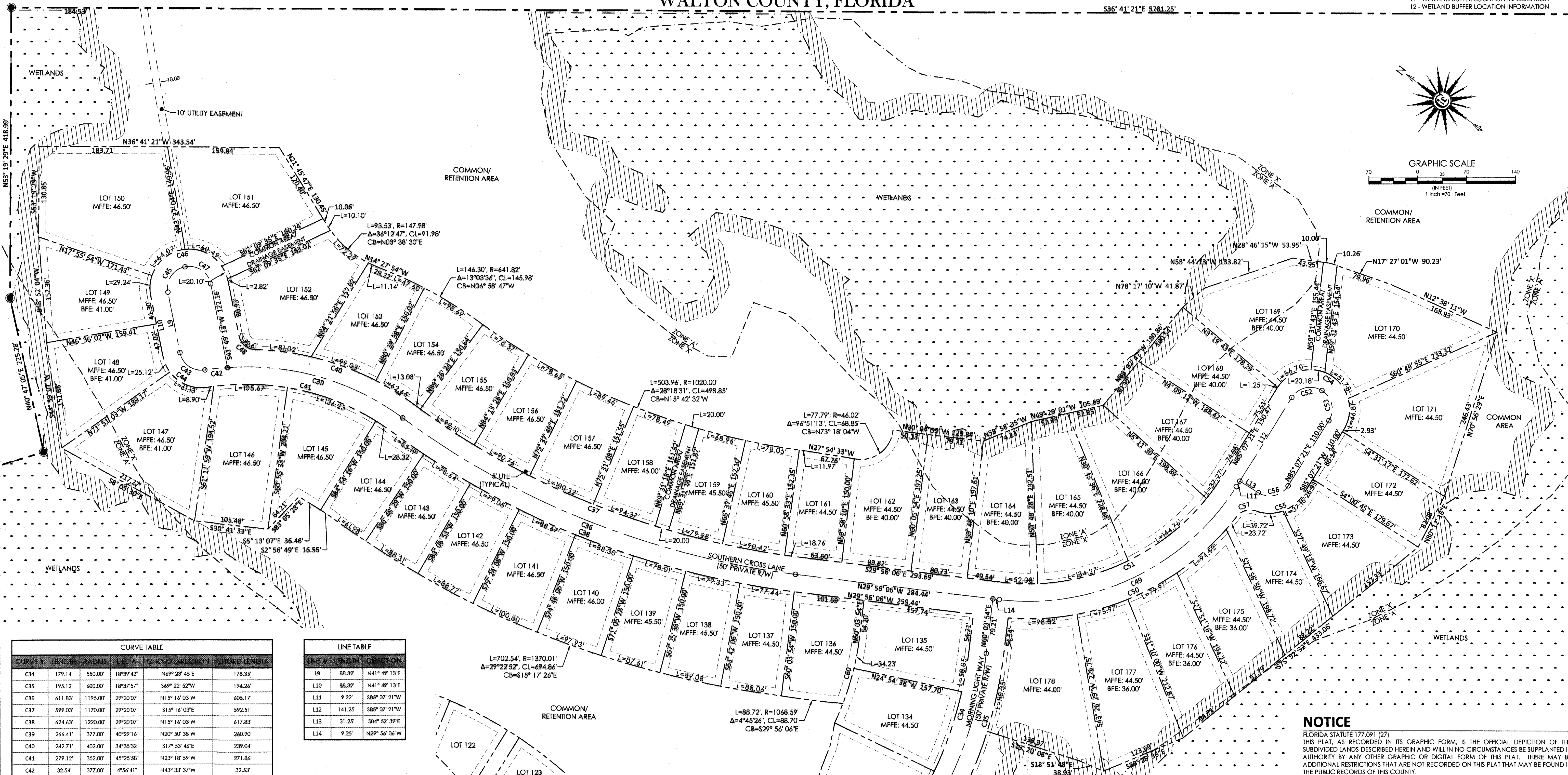
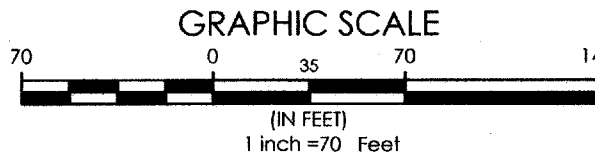
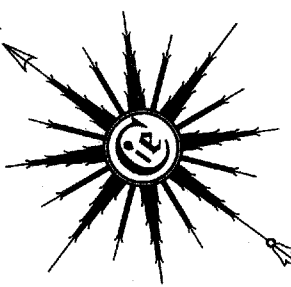
SITUATED IN SECTION 22, 23, 26, & 27 - TOWNSHIP 3 SOUTH - RANGE 18 WEST

WALTON COUNTY, FLORIDA

PLAT BOOK 24, PAGE 77.

SHEET INDEX:

- 1 - DEDICATIONS, CERTIFICATIONS, DESCRIPTION
- 2 - KEY SHEET
- 3 - BOUNDARY LOCATION INFORMATION
- 4 - BOUNDARY LOCATION INFORMATION
- 5 - BOUNDARY LOCATION INFORMATION
- 6 - BOUNDARY LOCATION INFORMATION
- 7 - BOUNDARY LOCATION INFORMATION
- 8 - LESS AND EXCEPT LOCATION INFORMATION
- 9 - WETLAND BUFFER LOCATION INFORMATION
- 10 - WETLAND BUFFER LOCATION INFORMATION
- 11 - WETLAND BUFFER LOCATION INFORMATION
- 12 - WETLAND BUFFER LOCATION INFORMATION



| CURVE TABLE | | | | | |
|-------------|--------|---------|------------|-----------------|--------------|
| CURVE # | LENGTH | RADIUS | DELTA | CHORD DIRECTION | CHORD LENGTH |
| C34 | 179.14 | 550.00 | 18°39'42" | N69°23'45"E | 178.35 |
| C35 | 195.12 | 600.00 | 18°37'57" | S69°22'52"W | 194.26 |
| C36 | 611.83 | 1195.00 | 29°20'07" | N15°16'03"W | 605.17 |
| C37 | 599.03 | 1170.00 | 29°20'07" | S15°16'03"E | 592.51 |
| C38 | 624.63 | 1220.00 | 29°20'07" | N15°16'03"W | 617.83 |
| C39 | 264.41 | 377.00 | 40°29'16" | N20°50'38"W | 260.90 |
| C40 | 242.71 | 402.00 | 34°35'32" | S17°53'46"E | 239.04 |
| C41 | 279.12 | 352.00 | 45°25'58" | N23°18'59"W | 271.86 |
| C42 | 32.54 | 377.00 | 4°56'41" | N43°33'37"W | 32.53 |
| C43 | 47.92 | 31.25 | 87°51'11" | N2°06'22"W | 43.36 |
| C44 | 86.25 | 56.25 | 87°51'11" | N2°06'22"W | 78.05 |
| C45 | 49.09 | 31.25 | 90°00'00" | N86°49'13"E | 44.19 |
| C46 | 176.71 | 56.25 | 180°00'00" | S48°10'47"E | 112.90 |
| C47 | 49.09 | 31.25 | 90°00'00" | S3°10'47"E | 44.19 |
| C48 | 32.59 | 24.25 | 77°00'45" | S3°18'51"W | 30.20 |
| C49 | 396.71 | 350.00 | 64°56'33" | N62°24'23"W | 375.81 |
| C50 | 373.00 | 375.00 | 56°59'26" | N60°50'14"W | 357.81 |
| C51 | 368.37 | 325.00 | 64°56'33" | S62°24'23"E | 348.97 |
| C52 | 49.09 | 31.25 | 90°00'00" | N49°52'39"W | 44.19 |
| C53 | 49.09 | 31.25 | 90°00'00" | N40°07'21"E | 44.19 |
| C54 | 176.71 | 56.25 | 180°00'00" | S4°52'39"E | 112.90 |
| C55 | 76.87 | 56.25 | 78°17'46" | N55°43'46"W | 71.02 |
| C56 | 49.09 | 31.25 | 90°00'00" | S49°52'39"E | 44.19 |
| C57 | 31.11 | 24.50 | 72°45'04" | N52°57'26"W | 29.06 |
| C60 | 86.80 | 392.19 | 12°40'51" | N67°57'22"E | 86.62 |

| LINE TABLE | | | |
|------------|--------|-------------|--|
| LINE # | LENGTH | DIRECTION | |
| L9 | 88.32 | N41°49'13"E | |
| L10 | 88.32 | N41°49'13"E | |
| L11 | 9.22 | S85°07'21"W | |
| L12 | 141.25 | S85°07'21"W | |
| L13 | 31.25 | S04°52'39"E | |
| L14 | 9.25 | N29°56'06"W | |

LEGEND

- PERMANENT REFERENCE MONUMENT (PRM)
SET 1/2" IRON PIN (PRM 7927)
- PERMANENT CONTROL POINT (PCP)
SET NAIL & DISK (PCP 7927)
- FOUND 1" CAPPED IRON PIN (SSMC LB 2108)
(STAMPED PRM)
- WETLANDS
- 25' WETLAND BUFFER

ABBREVIATIONS

- R/W RIGHT-OF-WAY
- N NORTH
- S SOUTH
- E EAST
- W WEST
- LB LICENSED BUSINESS
- MFFE MINIMUM FINISHED FLOOR ELEVATION
- DEGREES WHEN USED IN A BEARING OR ANGLE
- MINUTES WHEN USED IN A BEARING OR ANGLE
- SECONDS WHEN USED IN A BEARING OR ANGLE
- FEET OR DECIMAL THEREOF WHEN USED IN A DIMENSION
- INCHES WHEN USED IN A DIMENSION
- ± MORE OR LESS
- BSL BUILDING SETBACK LINE
- UTE UTILITY EASEMENT
- CL CHORD LENGTH
- CB CHORD BEARING
- BFE BASE FLOOD ELEVATION
- L ARC LENGTH

GENERAL NOTES

- THIS PLAT IS BASED UPON A BOUNDARY SURVEY BY THIS FIRM AND WAS PREPARED IN ACCORDANCE WITH THE STANDARDS OF PRACTICE FOR PROFESSIONAL SURVEYORS AND MAPPERS AS DEFINED IN CHAPTER 5J-17.051 OF THE FLORIDA ADMINISTRATIVE CODE AS SET FORTH BY THE FLORIDA BOARD OF PROFESSIONAL SURVEYORS AND MAPPERS PURSUANT TO SECTION 472.027 OF THE FLORIDA STATUTES.
- SOURCES OF INFORMATION RELIED UPON FOR THE PREPARATION OF THIS PLAT INCLUDES THE FOLLOWING: FIELD RECOVERED MONUMENTATION AND DEEDS, PLATS AND OTHER DOCUMENTATION AS NOTED HEREON.
- THIS PLAT DOES NOT REFLECT RESEARCH BY INNERLIGHT ENGINEERING CORPORATION REGARDING TITLE OR EASEMENT. THERE MAY EXIST: DEEDS OF RECORD, UNRECORDED DEEDS, PLATS, UNRECORDED PLATS, EASEMENTS, RIGHTS-OF-WAYS, OR OTHER INSTRUMENTS THAT MAY AFFECT THIS PARCEL.
- NORTH AND THE BEARINGS DEPICTED HEREON ARE BASED UPON THE STATE PLANE COORDINATE SYSTEM - FLORIDA NORTH ZONE, NORTH AMERICAN DATUM OF 1983 (NAD83) UTILIZING THE TRIMBLE ACCESS GPS NETWORK.
- NO UNDERGROUND INSTALLATIONS OR IMPROVEMENTS INCLUDING, BUT NOT LIMITED TO, UTILITIES, FOUNDATIONS, FOOTERS, HUMAN BURIAL SITES, AND CEMETERIES, WERE LOCATED, EXCEPT AS SHOWN.
- ALL LOT LINES DEPICTED HEREON ARE NON-RADIAL (N.R.) UNLESS OTHERWISE NOTED.
- FEDERAL EMERGENCY MANAGEMENT AGENCY (F.E.M.A.), FLOOD INSURANCE RATE MAP (F.I.R.M.) 12131C0716H, BEING PANEL 716 OF 738, EFFECTIVE DATE OF DECEMBER 30, 2020, INDICATES THAT THE SUBJECT PARCEL IS LOCATED IN ZONES "X" AND "A"; NO CERTIFICATIONS ARE MADE REGARDING THE ACCURACY OF SAID F.I.R.M.
- BUILDING SETBACKS ARE AS FOLLOWS: FRONT: 10'; SIDE: 5'; SIDE (WITH DRAINAGE EASEMENT): 10'; REAR (ABUTTING OTHER LOTS): 10'; AND REAR (ABUTTING OPEN SPACE): 5' PER THE APPROVED DEVELOPMENT ORDER.
- ELEVATIONS SHOWN HEREON ARE BASED ON THE NORTH AMERICAN VERTICAL DATUM OF 1988 (NAVD83), UTILIZING THE TRIMBLE ACCESS GPS NETWORK.
- WETLAND BUFFERS SHOWN HEREON ARE TO REMAIN INTACT, UNCLEARED AND UNDISTURBED.
- MINIMUM FINISHED FLOOR ELEVATIONS SHOWN HEREON ARE BASED ON A GRADING AND DRAINAGE PLAN PROVIDED BY KIMLEY HORN DATED JULY OF 2019.
- BASE FLOOD ELEVATIONS SHOWN HEREON ARE BASED ON A FLOOD STUDY PREPARED BY KIMLEY HORN DATED JANUARY OF 2019.

NOTICE

FLORIDA STATUTE 177.091 (27)
THIS PLAT, AS RECORDED IN ITS GRAPHIC FORM, IS THE OFFICIAL DEPICTION OF THE SUBDIVIDED LANDS DESCRIBED HEREIN AND WILL IN NO CIRCUMSTANCES BE SUPPLANTED IN AUTHORITY BY ANY OTHER GRAPHIC OR DIGITAL FORM OF THIS PLAT. THERE MAY BE ADDITIONAL RESTRICTIONS THAT ARE NOT RECORDED ON THIS PLAT THAT MAY BE FOUND IN THE PUBLIC RECORDS OF THIS COUNTY.

WALTON COUNTY STATEMENT

ALL PUBLIC AREAS SHOWN ON THIS PLAT, UNLESS OTHERWISE STATED, SHALL BE DEEMED TO HAVE BEEN DEDICATED TO THE PUBLIC FOR THE USES AND PURPOSES HEREON STATED. HOWEVER, NOTHING HEREIN SHALL BE CONSTRUED AS CREATING AN OBLIGATION UPON WALTON COUNTY TO PERFORM ANY ACT OF CONSTRUCTION OR MAINTENANCE WITHIN SUCH DEDICATED AREAS, EXCEPT WHEN THE OBLIGATION IS VOLUNTARILY ACCEPTED BY THE GOVERNING BODY OF WALTON COUNTY, FLORIDA, THE MERE RECORDING OF THIS PLAT DOES NOT CONSTITUTE ACCEPTANCE FOR ANY ACT OF CONSTRUCTION OR MAINTENANCE.

INNERLIGHT ENGINEERING CORPORATION
THINK SOLVE STATE
THE APPLIED SCIENCE OF SUCCESS
11490 EMERALD COAST PARKWAY, SUITE 2W
MIRAMAR BEACH | FLORIDA | 32550
LB#7927 | TELEPHONE: 850.424.5855

WATERSOUND CAMP CREEK - PHASE 2B

PLAT BOOK 24, PAGE 77.

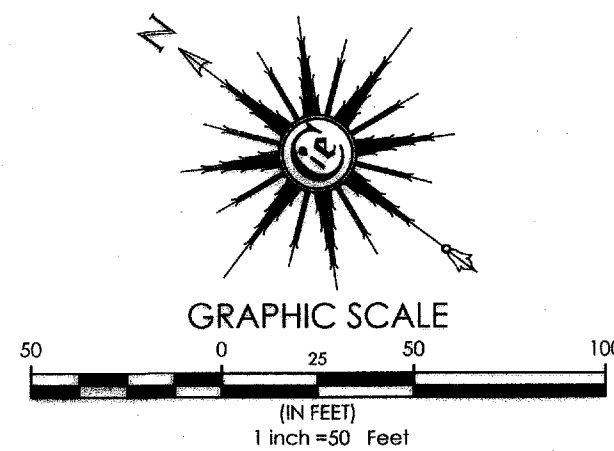
SHEET 7 OF 12

WATERSOUND CAMP CREEK - PHASE 2B

A PLANNED UNIT DEVELOPMENT

SITUATED IN SECTION 22, 23, 26, & 27 - TOWNSHIP 3 SOUTH - RANGE 18 WEST

WALTON COUNTY, FLORIDA



PLAT BOOK 24, PAGE 79

SHEET INDEX:

- 1 - DEDICATIONS, CERTIFICATIONS, DESCRIPTION
- 2 - KEY SHEET
- 3 - BOUNDARY LOCATION INFORMATION
- 4 - BOUNDARY LOCATION INFORMATION
- 5 - BOUNDARY LOCATION INFORMATION
- 6 - BOUNDARY LOCATION INFORMATION
- 7 - BOUNDARY LOCATION INFORMATION
- 8 - LESS AND EXCEPT LOCATION INFORMATION
- 9 - WETLAND BUFFER LOCATION INFORMATION
- 10 - WETLAND BUFFER LOCATION INFORMATION
- 11 - WETLAND BUFFER LOCATION INFORMATION
- 12 - WETLAND BUFFER LOCATION INFORMATION

LEGEND

- PERMANENT REFERENCE MONUMENT (PRM)
SET 1/2" IRON PIN (PRM 7927)
- PERMANENT CONTROL POINT (PCP)
SET NAIL & DISK (PCP 7927)
- FOUND 1" CAPPED IRON PIN (SSMC LB 2108)
(STAMPED PRM)
- WETLANDS
- 25' WETLAND BUFFER

ABBREVIATIONS

| | |
|------|--|
| R/W | RIGHT-OF-WAY |
| N | NORTH |
| S | SOUTH |
| E | EAST |
| W | WEST |
| LB | LICENSED BUSINESS |
| MFEE | MINIMUM FINISHED FLOOR ELEVATION |
| ° | DEGREES WHEN USED IN A BEARING OR ANGLE |
| ' | MINUTES WHEN USED IN A BEARING OR ANGLE |
| " | SECONDS WHEN USED IN A BEARING OR ANGLE |
| ± | FEET OR DECIMAL THEREOF WHEN USED IN A DIMENSION |
| ± | INCHES WHEN USED IN A DIMENSION |
| ± | MORE OR LESS |
| BSL | BUILDING SETBACK LINE |
| UTE | UTILITY EASEMENT |
| CB | CHORD BEARING |
| CL | CHORD LENGTH |
| BFE | BASE FLOOD ELEVATION |
| L | ARC LENGTH |

GENERAL NOTES


1. THIS PLAT IS BASED UPON A BOUNDARY SURVEY BY THIS FIRM AND WAS PREPARED IN ACCORDANCE WITH THE STANDARDS OF PRACTICE FOR PROFESSIONAL SURVEYORS AND MAPPERS AS DEFINED IN CHAPTER 5J-17.051 OF THE FLORIDA ADMINISTRATIVE CODE AS SET FORTH BY THE FLORIDA BOARD OF PROFESSIONAL SURVEYORS AND MAPPERS PURSUANT TO SECTION 472.027 OF THE FLORIDA STATUTES.
2. SOURCES OF INFORMATION RELIED UPON FOR THE PREPARATION OF THIS PLAT INCLUDES THE FOLLOWINGS: FIELD RECOVERED MONUMENTATION AND DEEDS, PLATS AND OTHER DOCUMENTATION AS NOTED HEREON.
3. THIS PLAT DOES NOT REFLECT RESEARCH BY INNERLIGHT ENGINEERING CORPORATION REGARDING TITLE OR EASEMENT, THERE MAY EXIST DEEDS OF RECORD, UNRECORDED DEEDS, PLATS, UNRECORDED PLATS, EASEMENTS, RIGHTS-OF-WAYS, OR OTHER INSTRUMENTS THAT MAY AFFECT THIS PARCEL.
4. NORTH AND THE BEARINGS DEPICTED HEREON ARE BASED UPON THE STATE PLANE COORDINATE SYSTEM - FLORIDA NORTH ZONE, NORTH AMERICAN DATUM OF 1983 (NAD83) UTILIZING THE TRIMBLE ACCESS GPS NETWORK.
5. NO UNDERGROUND INSTALLATIONS OR IMPROVEMENTS INCLUDING, BUT NOT LIMITED TO, UTILITIES, FOUNDATIONS, FOOTERS, HUMAN BURIAL SITES, AND CEMETERIES, WERE LOCATED, EXCEPT AS SHOWN.
6. ALL LOT LINES DEPICTED HEREON ARE NON-RADIAL (N.R.) UNLESS OTHERWISE NOTED.
7. FEDERAL EMERGENCY MANAGEMENT AGENCY (F.E.M.A.), FLOOD INSURANCE RATE MAP (F.I.R.M.) 12131C0716H, BEING PANEL 716 OF 738, EFFECTIVE DATE OF DECEMBER 30, 2020, INDICATES THAT THE SUBJECT PARCEL IS LOCATED IN ZONES "X" AND "A". NO CERTIFICATIONS ARE MADE REGARDING THE ACCURACY OF SAID F.I.R.M.
8. BUILDING SETBACKS ARE AS FOLLOWS: FRONT: 10'; SIDE: 5'; SIDE (WITH DRAINAGE EASEMENT): 10'; REAR (ABUTTING OTHER LOTS): 10'; AND REAR (ABUTTING OPEN SPACE): 5' PER THE APPROVED DEVELOPMENT ORDER.
9. ELEVATIONS SHOWN HEREON ARE BASED ON THE NORTH AMERICAN VERTICAL DATUM OF 1988 (NAVD 88), UTILIZING THE TRIMBLE ACCESS GPS NETWORK.
10. WETLAND BUFFERS SHOWN HEREON ARE TO REMAIN INTACT, UNCLEARED AND UNDISTURBED.
11. MINIMUM FINISHED FLOOR ELEVATIONS SHOWN HEREON ARE BASED ON A GRADING AND DRAINAGE PLAN PROVIDED BY KIMLEY HORN DATED JULY OF 2019.
12. BASE FLOOD ELEVATIONS SHOWN HEREON ARE BASED ON A FLOOD STUDY PREPARED BY KIMLEY HORN DATED JANUARY OF 2019.

NOTICE

FLORIDA STATUTE 177.091 (27)
THIS PLAT, AS RECORDED IN ITS GRAPHIC FORM, IS THE OFFICIAL DEPICTION OF THE SUBDIVIDED LANDS DESCRIBED HEREIN AND WILL IN NO CIRCUMSTANCES BE SUPPLANTED IN AUTHORITY BY ANY OTHER GRAPHIC OR DIGITAL FORM OF THIS PLAT. THERE MAY BE ADDITIONAL RESTRICTIONS THAT ARE NOT RECORDED ON THIS PLAT THAT MAY BE FOUND IN THE PUBLIC RECORDS OF THIS COUNTY.

WALTON COUNTY STATEMENT

ALL PUBLIC AREAS SHOWN ON THIS PLAT, UNLESS OTHERWISE STATED, SHALL BE DEEMED TO HAVE BEEN DEDICATED TO THE PUBLIC FOR THE USES AND PURPOSES HEREON STATED. HOWEVER, NOTHING HEREIN SHALL BE CONSTRUED AS CREATING AN OBLIGATION UPON WALTON COUNTY TO PERFORM ANY ACT OF CONSTRUCTION OR MAINTENANCE WITHIN SUCH DEDICATED AREAS, EXCEPT WHEN THE OBLIGATION IS VOLUNTARILY ACCEPTED BY THE GOVERNING BODY OF WALTON COUNTY, FLORIDA. THE MERE RECORDING OF THIS PLAT DOES NOT CONSTITUTE ACCEPTANCE FOR ANY ACT OF CONSTRUCTION OR MAINTENANCE.

**INNERLIGHT ENGINEERING CORPORATION**
THINK SOLVE SERVE
THE APPLIED SCIENCE OF SUCCESS
11490 EMERALD COAST PARKWAY, SUITE 2W
MIRAMAR BEACH | FLORIDA | 32550
LB#7927 | TELEPHONE: 850.424.5855

WATERSOUND CAMP CREEK - PHASE 2B

PLAT BOOK 24, PAGE 79

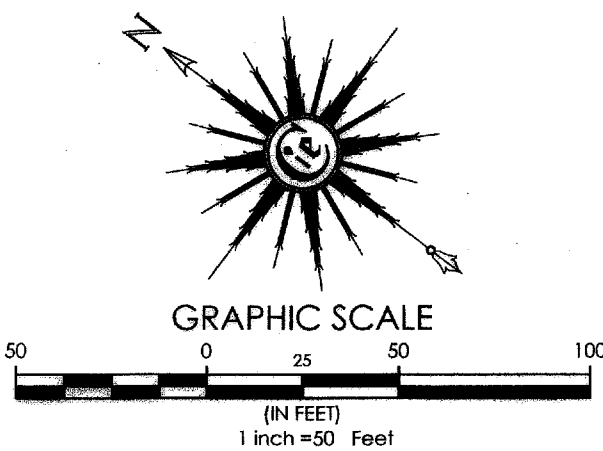
SHEET 9 OF 12

WATERSOUND CAMP CREEK - PHASE 2B
A PLANNED UNIT DEVELOPMENT
SITUATED IN SECTION 22, 23, 26, & 27 - TOWNSHIP 3 SOUTH - RANGE 18 WEST
WALTON COUNTY, FLORIDA

PLAT BOOK 24, PAGE 80

SHEET INDEX:

- 1 - DEDICATIONS, CERTIFICATIONS, DESCRIPTION
- 2 - KEY SHEET
- 3 - BOUNDARY LOCATION INFORMATION
- 4 - BOUNDARY LOCATION INFORMATION
- 5 - BOUNDARY LOCATION INFORMATION
- 6 - BOUNDARY LOCATION INFORMATION
- 7 - BOUNDARY LOCATION INFORMATION
- 8 - LESS AND EXCEPT LOCATION INFORMATION
- 9 - WETLAND BUFFER LOCATION INFORMATION
- 10 - WETLAND BUFFER LOCATION INFORMATION
- 11 - WETLAND BUFFER LOCATION INFORMATION
- 12 - WETLAND BUFFER LOCATION INFORMATION



LEGEND

- PERMANENT REFERENCE MONUMENT (PRM)
SET 1/2" IRON PIN (PRM 7927)
- PERMANENT CONTROL POINT (PCP)
SET NAIL & DISK (PCP 7927)
- FOUND 1" CAPPED IRON PIN (SSMC LB 2108)
(STAMPED PRM)
- WETLANDS
- 25' WETLAND BUFFER

ABBREVIATIONS

- | | |
|------|--|
| R/W | RIGHT-OF-WAY |
| N | NORTH |
| S | SOUTH |
| E | EAST |
| W | WEST |
| LB | LICENSED BUSINESS |
| MFEE | MINIMUM FINISHED FLOOR ELEVATION |
| ° | DEGREES WHEN USED IN A BEARING OR ANGLE |
| ' | MINUTES WHEN USED IN A BEARING OR ANGLE |
| " | SECONDS WHEN USED IN A BEARING OR ANGLE |
| ± | FEET OR DECIMAL THEREOF WHEN USED IN A DIMENSION |
| ± | INCHES WHEN USED IN A DIMENSION |
| ± | MORE OR LESS |
| BSL | BUILDING SETBACK LINE |
| UTE | UTILITY EASEMENT |
| CL | CHORD LENGTH |
| CB | CHORD BEARING |
| BFE | BASE FLOOD ELEVATION |
| L | ARC LENGTH |

GENERAL NOTES

1. THIS PLAT IS BASED UPON A BOUNDARY SURVEY BY THIS FIRM AND WAS PREPARED IN ACCORDANCE WITH THE STANDARDS OF PRACTICE FOR PROFESSIONAL SURVEYORS AND MAPPERS AS DEFINED IN CHAPTER 51-17.051 OF THE FLORIDA ADMINISTRATIVE CODE AS SET FORTH BY THE FLORIDA BOARD OF PROFESSIONAL SURVEYORS AND MAPPERS PURSUANT TO SECTION 472.027 OF THE FLORIDA STATUTES.
2. SOURCES OF INFORMATION RELIED UPON FOR THE PREPARATION OF THIS PLAT INCLUDES THE FOLLOWING: FIELD RECOVERED MONUMENTATION AND DEEDS, PLATS, AND OTHER DOCUMENTATION AS NOTED HEREON.
3. THIS PLAT DOES NOT REFLECT RESEARCH BY INNERLIGHT ENGINEERING CORPORATION REGARDING TITLE OR EASEMENT, THERE MAY EXIST DEEDS OF RECORD, UNRECORDED DEEDS, PLATS, UNRECORDED PLATS, EASEMENTS, RIGHTS-OF-WAYS, OR OTHER INSTRUMENTS THAT MAY AFFECT THIS PARCEL.
4. NORTH AND THE BEARINGS DEPICTED HEREON ARE BASED UPON THE STATE PLANE COORDINATE SYSTEM - FLORIDA NORTH ZONE, NORTH AMERICAN DATUM OF 1983 (NAD83) UTILIZING THE TRIMBLE ACCESS GPS NETWORK.
5. NO UNDERGROUND INSTALLATIONS OR IMPROVEMENTS INCLUDING, BUT NOT LIMITED TO, UTILITIES, FOUNDATIONS, FOOTERS, HUMAN BURIAL SITES, AND CEMETERIES, WERE LOCATED, EXCEPT AS SHOWN.
6. ALL LOT LINES DEPICTED HEREON ARE NON-RADIAL (N.R.) UNLESS OTHERWISE NOTED.
7. FEDERAL EMERGENCY MANAGEMENT AGENCY (F.E.M.A.), FLOOD INSURANCE RATE MAP (F.I.R.M.) 12131C0716H, BEING PANEL 716 OF 738, EFFECTIVE DATE OF DECEMBER 30, 2020, INDICATES THAT THE SUBJECT PARCEL IS LOCATED IN ZONES "X" AND "A". NO CERTIFICATIONS ARE MADE REGARDING THE ACCURACY OF SAID F.I.R.M.
8. BUILDING SETBACKS ARE AS FOLLOWS: FRONT: 10'; SIDE: 5'; SIDE (WITH DRAINAGE EASEMENT): 10'; REAR (ABUTTING OTHER LOTS): 10'; AND REAR (ABUTTING OPEN SPACE): 5' PER THE APPROVED DEVELOPMENT ORDER.
9. ELEVATIONS SHOWN HEREON ARE BASED ON THE NORTH AMERICAN VERTICAL DATUM OF 1988 (NAVD 88), UTILIZING THE TRIMBLE ACCESS GPS NETWORK.
10. WETLAND BUFFERS SHOWN HEREON ARE TO REMAIN INTACT, UNCLEARED AND UNDISTURBED.
11. MINIMUM FINISHED FLOOR ELEVATIONS SHOWN HEREON ARE BASED ON A GRADING AND DRAINAGE PLAN PROVIDED BY KIMLEY HORN DATED JULY OF 2019.
12. BASE FLOOD ELEVATIONS SHOWN HEREON ARE BASED ON A FLOOD STUDY PREPARED BY KIMLEY HORN DATED JANUARY OF 2019.

NOTICE

FLORIDA STATUTE 177.091 (27)
THIS PLAT, AS RECORDED IN ITS GRAPHIC FORM, IS THE OFFICIAL DEPICTION OF THE SUBDIVIDED LANDS DESCRIBED HEREIN AND WILL IN NO CIRCUMSTANCES BE SUPPLANTED IN AUTHORITY BY ANY OTHER GRAPHIC OR DIGITAL FORM OF THIS PLAT. THERE MAY BE ADDITIONAL RESTRICTIONS THAT ARE NOT RECORDED ON THIS PLAT THAT MAY BE FOUND IN THE PUBLIC RECORDS OF THIS COUNTY.

WALTON COUNTY STATEMENT

ALL PUBLIC AREAS SHOWN ON THIS PLAT, UNLESS OTHERWISE STATED, SHALL BE DEEMED TO HAVE BEEN DEDICATED TO THE PUBLIC FOR THE USES AND PURPOSES HEREON STATED. HOWEVER, NOTHING HEREIN SHALL BE CONSTRUED AS CREATING AN OBLIGATION UPON WALTON COUNTY TO PERFORM ANY ACT OF CONSTRUCTION OR MAINTENANCE WITHIN SUCH DEDICATED AREAS, EXCEPT WHEN THE OBLIGATION IS VOLUNTARILY ACCEPTED BY THE GOVERNING BODY OF WALTON COUNTY, FLORIDA. THE MERE RECORDING OF THIS PLAT DOES NOT CONSTITUTE ACCEPTANCE FOR ANY ACT OF CONSTRUCTION OR MAINTENANCE.

INNERLIGHT ENGINEERING CORPORATION
THE APPLIED SCIENCE OF SUCCESS
11490 EMERALD COAST PARKWAY, SUITE 2W
MIRAMAR BEACH | FLORIDA | 32550
LB#7927 | TELEPHONE: 850.424.5855

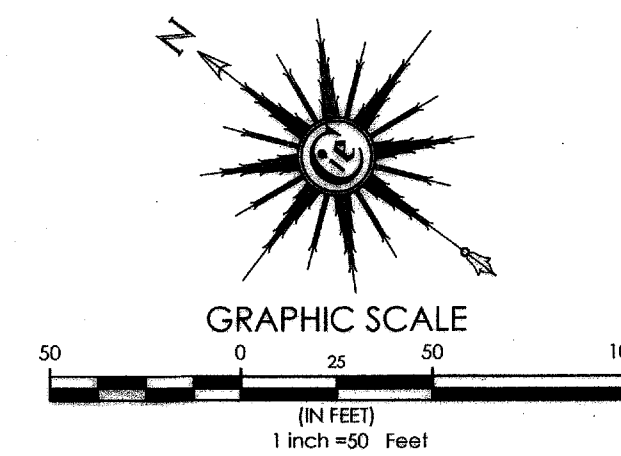
WATERSOUND CAMP CREEK - PHASE 2B

WATERSOUND CAMP CREEK - PHASE 2B

A PLANNED UNIT DEVELOPMENT

SITUATED IN SECTION 22, 23, 26, & 27 - TOWNSHIP 3 SOUTH - RANGE 18 WEST

WALTON COUNTY, FLORIDA



PLAT BOOK 24, PAGE 81

SHEET INDEX:

- 1 - DEDICATIONS, CERTIFICATIONS, DESCRIPTION
- 2 - KEY SHEET
- 3 - BOUNDARY LOCATION INFORMATION
- 4 - BOUNDARY LOCATION INFORMATION
- 5 - BOUNDARY LOCATION INFORMATION
- 6 - BOUNDARY LOCATION INFORMATION
- 7 - BOUNDARY LOCATION INFORMATION
- 8 - LESS AND EXCEPT LOCATION INFORMATION
- 9 - WETLAND BUFFER LOCATION INFORMATION
- 10 - WETLAND BUFFER LOCATION INFORMATION
- 11 - WETLAND BUFFER LOCATION INFORMATION
- 12 - WETLAND BUFFER LOCATION INFORMATION

LEGEND

- PERMANENT REFERENCE MONUMENT (PRM)
SET 1/2" IRON PIN (PRM 7927)
- PERMANENT CONTROL POINT (PCP)
SET NAIL & DISK (PCP 7927)
- FOUND 1" CAPPED IRON PIN (SSMC LB 2108)
(STAMPED PRM)
- WETLANDS
- 25' WETLAND BUFFER

ABBREVIATIONS

- | | |
|------|--|
| R/W | RIGHT-OF-WAY |
| N | NORTH |
| S | SOUTH |
| E | EAST |
| W | WEST |
| LB | LICENSED BUSINESS |
| MFFE | MINIMUM FINISHED FLOOR ELEVATION |
| ° | DEGREES WHEN USED IN A BEARING OR ANGLE |
| ' | MINUTES WHEN USED IN A BEARING OR ANGLE |
| " | SECONDS WHEN USED IN A BEARING OR ANGLE |
| ± | FEET OR DECIMAL THEREOF WHEN USED IN A DIMENSION |
| ± | INCHES WHEN USED IN A DIMENSION |
| ± | MORE OR LESS |
| BSL | BUILDING SETBACK LINE |
| UTE | UTILITY EASEMENT |
| CL | CHORD LENGTH |
| CB | CHORD BEARING |
| BFE | BASE FLOOD ELEVATION |
| L | ARC LENGTH |

GENERAL NOTES

1. THIS PLAT IS BASED UPON A BOUNDARY SURVEY BY THIS FIRM AND WAS PREPARED IN ACCORDANCE WITH THE STANDARDS OF PRACTICE FOR PROFESSIONAL SURVEYORS AND MAPPERS AS DEFINED IN CHAPTER 5J-17.051 OF THE FLORIDA ADMINISTRATIVE CODE AS SET FORTH BY THE FLORIDA BOARD OF PROFESSIONAL SURVEYORS AND MAPPERS PURSUANT TO SECTION 472.027 OF THE FLORIDA STATUTES.
2. SOURCES OF INFORMATION RELIED UPON FOR THE PREPARATION OF THIS PLAT INCLUDES THE FOLLOWING: FIELD RECOVERED MONUMENTATION AND DEEDS, PLATS AND OTHER DOCUMENTATION AS NOTED HEREON.
3. THIS PLAT DOES NOT REFLECT RESEARCH BY INNERLIGHT ENGINEERING CORPORATION REGARDING TITLE OR EASEMENT; THERE MAY EXIST DEEDS OF RECORD, UNRECORDED DEEDS, PLATS, UNRECORDED PLATS, EASEMENTS, RIGHTS-OF-WAYS, OR OTHER INSTRUMENTS THAT MAY AFFECT THIS PARCEL.
4. NORTH AND THE BEARINGS DEPICTED HEREON ARE BASED UPON THE STATE PLANE COORDINATE SYSTEM - FLORIDA NORTH ZONE, NORTH AMERICAN DATUM OF 1983 (NAD83) UTILIZING THE TRIMBLE ACCESS GPS NETWORK.
5. NO UNDERGROUND INSTALLATIONS OR IMPROVEMENTS INCLUDING, BUT NOT LIMITED TO, UTILITIES, FOUNDATIONS, FOOTERS, HUMAN BURIAL SITES, AND CEMETERIES, WERE LOCATED, EXCEPT AS SHOWN.
6. ALL LOT LINES DEPICTED HEREON ARE NON-RADIAL (N.R.) UNLESS OTHERWISE NOTED.
7. FEDERAL EMERGENCY MANAGEMENT AGENCY (F.E.M.A.), FLOOD INSURANCE RATE MAP (F.I.R.M.) 12131C0716H, BEING PANEL 716 OF 738, EFFECTIVE DATE OF DECEMBER 30, 2020, INDICATES THAT THE SUBJECT PARCEL IS LOCATED IN ZONES "X" AND "A". NO CERTIFICATIONS ARE MADE REGARDING THE ACCURACY OF SAID F.I.R.M.
8. BUILDING SETBACKS ARE AS FOLLOWS: FRONT: 10'; SIDE: 5'; SIDE (WITH DRAINAGE EASEMENT): 10'; REAR (ABUTTING OTHER LOTS): 10'; AND REAR (ABUTTING OPEN SPACE): 5' PER THE APPROVED DEVELOPMENT ORDER.
9. ELEVATIONS SHOWN HEREON ARE BASED ON THE NORTH AMERICAN VERTICAL DATUM OF 1988 (NAVD 88), UTILIZING THE TRIMBLE ACCESS GPS NETWORK.
10. WETLAND BUFFERS SHOWN HEREON ARE TO REMAIN INTACT, UNCLEARED AND UNDISTURBED.
11. MINIMUM FINISHED FLOOR ELEVATIONS SHOWN HEREON ARE BASED ON A GRADING AND DRAINAGE PLAN PROVIDED BY KIMLEY HORN DATED JULY OF 2019.
12. BASE FLOOD ELEVATIONS SHOWN HEREON ARE BASED ON A FLOOD STUDY PREPARED BY KIMLEY HORN DATED JANUARY OF 2019.

NOTICE

FLORIDA STATUTE 177.091 (27)
THIS PLAT, AS RECORDED IN ITS GRAPHIC FORM, IS THE OFFICIAL DEPICTION OF THE SUBDIVIDED LANDS DESCRIBED HEREIN AND WILL IN NO CIRCUMSTANCES BE SUPPLANTED IN AUTHORITY BY ANY OTHER GRAPHIC OR DIGITAL FORM OF THIS PLAT. THERE MAY BE ADDITIONAL RESTRICTIONS THAT ARE NOT RECORDED ON THIS PLAT THAT MAY BE FOUND IN THE PUBLIC RECORDS OF THIS COUNTY.

WALTON COUNTY STATEMENT

ALL PUBLIC AREAS SHOWN ON THIS PLAT, UNLESS OTHERWISE STATED, SHALL BE DEEMED TO HAVE BEEN DEDICATED TO THE PUBLIC FOR THE USES AND PURPOSES HEREON STATED. HOWEVER, NOTHING HEREIN SHALL BE CONSTRUED AS CREATING AN OBLIGATION UPON WALTON COUNTY TO PERFORM ANY ACT OF CONSTRUCTION OR MAINTENANCE WITHIN SUCH DEDICATED AREAS, EXCEPT WHEN THE OBLIGATION IS VOLUNTARILY ACCEPTED BY THE GOVERNING BODY OF WALTON COUNTY, FLORIDA. THE MERE RECORDING OF THIS PLAT DOES NOT CONSTITUTE ACCEPTANCE FOR ANY ACT OF CONSTRUCTION OR MAINTENANCE.

INNERLIGHT ENGINEERING CORPORATION
THE APPLIED SCIENCE OF SUCCESS
11490 EMERALD COAST PARKWAY, SUITE 2W
MIRAMAR BEACH | FLORIDA | 32550
LB#7927 | TELEPHONE: 850.424.5855

WATERSOUND CAMP CREEK - PHASE 2B

PLAT BOOK 24, PAGE 81 SHEET 11 OF 12

WATERSOUND CAMP CREEK - PHASE 2B

A PLANNED UNIT DEVELOPMENT

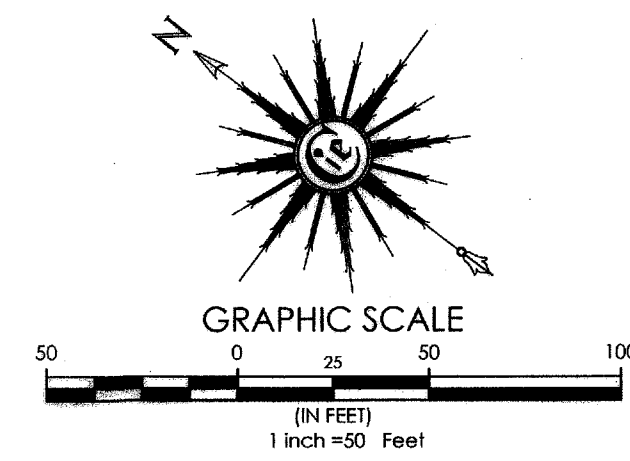
SITUATED IN SECTION 22, 23, 26, & 27 - TOWNSHIP 3 SOUTH - RANGE 18 WEST

WALTON COUNTY, FLORIDA

PLAT BOOK 24, PAGE 82

SHEET INDEX:

- 1 - DEDICATIONS, CERTIFICATIONS, DESCRIPTION
- 2 - KEY SHEET
- 3 - BOUNDARY LOCATION INFORMATION
- 4 - BOUNDARY LOCATION INFORMATION
- 5 - BOUNDARY LOCATION INFORMATION
- 6 - BOUNDARY LOCATION INFORMATION
- 7 - BOUNDARY LOCATION INFORMATION
- 8 - LESS AND EXCEPT LOCATION INFORMATION
- 9 - WETLAND BUFFER LOCATION INFORMATION
- 10 - WETLAND BUFFER LOCATION INFORMATION
- 11 - WETLAND BUFFER LOCATION INFORMATION
- 12 - WETLAND BUFFER LOCATION INFORMATION



LEGEND

- PERMANENT REFERENCE MONUMENT (PRM)
SET 1/2" IRON PIN (PRM 7927)
- PERMANENT CONTROL POINT (PCP)
SET NAIL & DISK (PCP 7927)
- FOUND 1" CAPPED IRON PIN (SSMC LB 2108)
(STAMPED PRM)
- WETLANDS
- 25' WETLAND BUFFER

ABBREVIATIONS

- | | |
|-------|--|
| R/W | RIGHT-OF-WAY |
| N | NORTH |
| S | SOUTH |
| E | EAST |
| W | WEST |
| LB | LICENSED BUSINESS |
| MINFE | MINIMUM FINISHED FLOOR ELEVATION |
| ° | DEGREES WHEN USED IN A BEARING OR ANGLE |
| ' | MINUTES WHEN USED IN A BEARING OR ANGLE |
| " | SECONDS WHEN USED IN A BEARING OR ANGLE |
| ± | FEET OR DECIMAL THEREOF WHEN USED IN A DIMENSION |
| ± | INCHES WHEN USED IN A DIMENSION |
| ± | MORE OR LESS |
| BSL | BUILDING SETBACK LINE |
| UTE | UTILITY EASEMENT |
| CL | CHORD LENGTH |
| CB | CHORD BEARING |
| BFE | BASE FLOOD ELEVATION |
| L | ARC LENGTH |

GENERAL NOTES

1. THIS PLAT IS BASED UPON A BOUNDARY SURVEY BY THIS FIRM AND WAS PREPARED IN ACCORDANCE WITH THE STANDARDS OF PRACTICE FOR PROFESSIONAL SURVEYORS AND MAPPERS AS DEFINED IN CHAPTER 5J-17.051 OF THE FLORIDA ADMINISTRATIVE CODE AS SET FORTH BY THE FLORIDA BOARD OF PROFESSIONAL SURVEYORS AND MAPPERS PURSUANT TO SECTION 402.022 OF THE FLORIDA STATUTES.
2. SOURCES OF INFORMATION REIED UPON FOR THE PREPARATION OF THIS PLAT INCLUDES THE FOLLOWINGS: FIELD RECOVERED MONUMENTATION AND DEEDS, PLATS AND OTHER DOCUMENTATION AS NOTED HEREON.
3. THIS PLAT DOES NOT REFLECT RESEARCH BY INNERLIGHT ENGINEERING CORPORATION REGARDING TITLE OR EASEMENT, THERE MAY EXIST DEEDS OF RECORD, UNRECORDED DEEDS, PLATS, UNRECORDED PLATS, EASEMENTS, RIGHTS-OF-WAYS, OR OTHER INSTRUMENTS THAT MAY AFFECT THIS PARCEL.
4. NORTH AND THE BEARINGS DEPICTED HEREON ARE BASED UPON THE STATE PLANE COORDINATE SYSTEM - FLORIDA NORTH ZONE, NORTH AMERICAN DATUM OF 1983 (NAD83) UTILIZING THE TRIMBLE ACCESS GPS NETWORK.
5. NO UNDERGROUND INSTALLATIONS OR IMPROVEMENTS INCLUDING, BUT NOT LIMITED TO, UTILITIES, FOUNDATIONS, FOOTERS, HUMAN BURIAL SITES, AND CEMETERIES, WERE LOCATED, EXCEPT AS SHOWN.
6. ALL LOT LINES DEPICTED HEREON ARE NON-RADIAL (N.R.) UNLESS OTHERWISE NOTED.
7. FEDERAL EMERGENCY MANAGEMENT AGENCY (F.E.M.A.), FLOOD INSURANCE RATE MAP (F.I.R.M.) 12131C0716H, BEING PANEL 716 OF 738, EFFECTIVE DATE OF DECEMBER 30, 2020, INDICATES THAT THE SUBJECT PARCEL IS LOCATED IN ZONES "X" AND "A". NO CERTIFICATIONS ARE MADE REGARDING THE ACCURACY OF SAID F.I.R.M.
8. BUILDING SETBACKS ARE AS FOLLOWS: FRONT: 10'; SIDE: 5'; SIDE (WITH DRAINAGE EASEMENT): 10'; REAR (ABUTTING OTHER LOTS): 10'; AND REAR (ABUTTING OPEN SPACE): 5' PER THE APPROVED DEVELOPMENT ORDER.
9. ELEVATIONS SHOWN HEREON ARE BASED ON THE NORTH AMERICAN VERTICAL DATUM OF 1988 (NAVD 88), UTILIZING THE TRIMBLE ACCESS GPS NETWORK.
10. WETLAND BUFFERS SHOWN HEREON ARE TO REMAIN INTACT, UNCLEARED AND UNDISTURBED.
11. MINIMUM FINISHED FLOOR ELEVATIONS SHOWN HEREON ARE BASED ON A GRADING AND DRAINAGE PLAN PROVIDED BY KIMLEY HORN DATED JULY OF 2019.
12. BASE FLOOD ELEVATIONS SHOWN HEREON ARE BASED ON A FLOOD STUDY PREPARED BY KIMLEY HORN DATED JANUARY OF 2019.

NOTICE

FLORIDA STATUTE 177.091 (27)
THIS PLAT, AS RECORDED IN ITS GRAPHIC FORM, IS THE OFFICIAL DEPICTION OF THE SUBDIVIDED LANDS DESCRIBED HEREIN AND WILL IN NO CIRCUMSTANCES BE SUPPLANTED IN AUTHORITY BY ANY OTHER GRAPHIC OR DIGITAL FORM OF THIS PLAT. THERE MAY BE ADDITIONAL RESTRICTIONS THAT ARE NOT RECORDED ON THIS PLAT THAT MAY BE FOUND IN THE PUBLIC RECORDS OF THIS COUNTY.

WALTON COUNTY STATEMENT

ALL PUBLIC AREAS SHOWN ON THIS PLAT, UNLESS OTHERWISE STATED, SHALL BE DEEMED TO HAVE BEEN DEDICATED TO THE PUBLIC FOR THE USES AND PURPOSES HEREON STATED. HOWEVER, NOTHING HEREIN SHALL BE CONSTRUED AS CREATING AN OBLIGATION UPON WALTON COUNTY TO PERFORM ANY ACT OF CONSTRUCTION OR MAINTENANCE WITHIN SUCH DEDICATED AREAS, EXCEPT WHEN THE OBLIGATION IS VOLUNTARILY ACCEPTED BY THE GOVERNING BODY OF WALTON COUNTY, FLORIDA. THE MERE RECORDING OF THIS PLAT DOES NOT CONSTITUTE ACCEPTANCE FOR ANY ACT OF CONSTRUCTION OR MAINTENANCE.

INNERLIGHT ENGINEERING CORPORATION
THE APPLIED SCIENCE OF SUCCESS
11490 EMERALD COAST PARKWAY, SUITE 2W
MIRAMAR BEACH | FLORIDA | 32550
LB#7927 | TELEPHONE: 850.424.5855

WATERSOUND CAMP CREEK - PHASE 2B

PLAT BOOK 24, PAGE 82 SHEET 12 OF 12