



# WATERSOUND CAMP CREEK - PHASE 2B

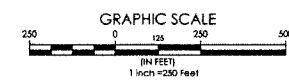
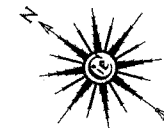
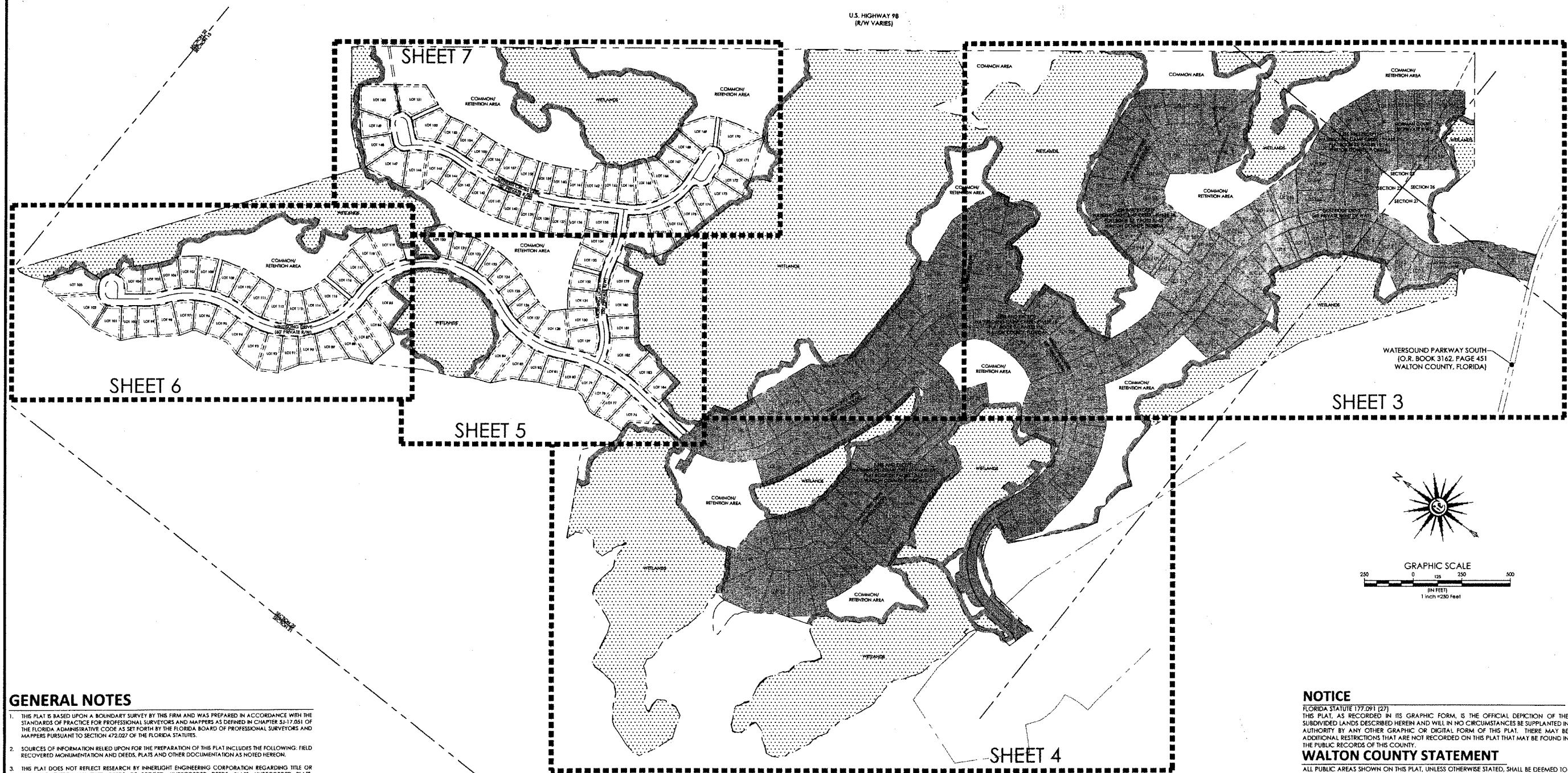
A PLANNED UNIT DEVELOPMENT

SITUATED IN SECTION 22, 23, 26, & 27 - TOWNSHIP 3 SOUTH - RANGE 18 WEST

WALTON COUNTY, FLORIDA

## SHEET INDEX:

- 1 - DEDICATIONS, CERTIFICATIONS, DESCRIPTION
- 2 - KEY SHEET
- 3 - BOUNDARY LOCATION INFORMATION
- 4 - BOUNDARY LOCATION INFORMATION
- 5 - BOUNDARY LOCATION INFORMATION
- 6 - BOUNDARY LOCATION INFORMATION
- 7 - BOUNDARY LOCATION INFORMATION
- 8 - LESS AND EXCEPT LOCATION INFORMATION
- 9 - WETLAND BUFFER LOCATION INFORMATION
- 10 - WETLAND BUFFER LOCATION INFORMATION
- 11 - WETLAND BUFFER LOCATION INFORMATION
- 12 - WETLAND BUFFER LOCATION INFORMATION



### GENERAL NOTES

1. THIS PLAT IS BASED UPON A BOUNDARY SURVEY BY THIS FIRM AND WAS PREPARED IN ACCORDANCE WITH THE STANDARDS OF PRACTICE FOR PROFESSIONAL SURVEYORS AND MAPPERS AS DEFINED IN CHAPTER 53-17.051 OF THE FLORIDA ADMINISTRATIVE CODE AS SET FORTH BY THE FLORIDA BOARD OF PROFESSIONAL SURVEYORS AND MAPPERS PURSUANT TO SECTION 472.027 OF THE FLORIDA STATUTES.
2. SOURCES OF INFORMATION RELED UPON FOR THE PREPARATION OF THIS PLAT INCLUDES THE FOLLOWING: FIELD RECOVERED MONUMENTATION AND DEEDS, PLATS AND OTHER DOCUMENTATION AS NOTED HEREON.
3. THIS PLAT DOES NOT REFLECT RESEARCH BY INNERLIGHT ENGINEERING CORPORATION REGARDING TITLE OR EASEMENTS, THERE MAY EXIST DEEDS OF RECORD, UNRECORDED DEEDS, PLATS, UNRECORDED PLATS, EASEMENTS, RIGHTS-OF-WAYS, OR OTHER INSTRUMENTS THAT MAY AFFECT THIS PARCEL.
4. NORTH AND THE BEARINGS DEPICTED HEREON ARE BASED UPON THE STATE PLANE COORDINATE SYSTEM - FLORIDA NORTH ZONE, NORTH AMERICAN DATUM OF 1983 (NAD83) UTILIZING THE TRIMBLE ACCESS GPS NETWORK.
5. NO UNDERGROUND INSTALLATIONS OR IMPROVEMENTS INCLUDING, BUT NOT LIMITED TO, UTILITIES, FOUNDATIONS, FOOTERS, HUMAN BURIAL SITES, AND CEMETERIES, WERE LOCATED, EXCEPT AS SHOWN.
6. ALL LOT LINES DEPICTED HEREON ARE NON-RADIAL (N.R.) UNLESS OTHERWISE NOTED.
7. FEDERAL EMERGENCY MANAGEMENT AGENCY (F.E.M.A.), FLOOD INSURANCE RATE MAP (F.I.R.M.) 12131C0714H, BEING PANEL 714 OF 736, EFFECTIVE DATE OF DECEMBER 30, 2020, INDICATES THAT THE SUBJECT PARCEL IS LOCATED IN ZONES "X" AND "A". NO CERTIFICATIONS ARE MADE REGARDING THE ACCURACY OF SAID F.I.R.M.
8. BUILDING SETBACKS ARE AS FOLLOWS: FRONT: 10', SIDE: 5', SIDE (WITH DRAINAGE EASEMENT): 10', REAR (ABUTTING OTHER LOTS): 10', AND REAR (ABUTTING OPEN SPACE): 5' PER THE APPROVED DEVELOPMENT ORDER.
9. ELEVATIONS SHOWN HEREON ARE BASED ON THE NORTH AMERICAN VERTICAL DATUM OF 1988 (NAVD 88), UTILIZING THE TRIMBLE ACCESS GPS NETWORK.
10. WETLAND BUFFERS SHOWN HEREON ARE TO REMAIN INTACT, UNCLEARED AND UNDISTURBED.
11. MINIMUM FINISHED FLOOR ELEVATIONS SHOWN HEREON ARE BASED ON A GRADING AND DRAINAGE PLAN PROVIDED BY EMLEY HORN DATED JULY OF 2019.
12. BASE FLOOD ELEVATIONS SHOWN HEREON ARE BASED ON A FLOOD STUDY PREPARED BY EMLEY HORN DATED JANUARY OF 2019.

### ABBREVIATIONS

R/W	RIGHT-OF-WAY
N	NORTH
S	SOUTH
E	EAST
W	WEST
LB	LICENSED BUSINESS
MFFE	MINIMUM FINISHED FLOOR ELEVATION
°	DEGREES WHEN USED IN A BEARING OR ANGLE
'	MINUTES WHEN USED IN A BEARING OR ANGLE
"	SECONDS WHEN USED IN A BEARING OR ANGLE
-	FEET OR DECIMAL THEREOF WHEN USED IN A DIMENSION
±	MORE OR LESS
BSL	BUILDING SETBACK LINE
U/E	UTILITY EASEMENT
CL	CHORD LENGTH
CB	CHORD BEARING
BFE	BASE FLOOD ELEVATION
L	ARC LENGTH

### LEGEND

- PERMANENT REFERENCE MONUMENT (PRM) SET 1/2" IRON PIN (PRM 7927)
- PERMANENT CONTROL POINT (PCP) SET NAIL & DISK (PCP 7927)
- PERMANENT REFERENCE MONUMENT (PRM) FOUND 1/2" IRON PIN (PRM 7922)
- FOUND 1" CAPPED IRON PIN (SSMC LB 2108) (STAMPED PRM)
- ▨ WETLANDS
- ▨ 25' WETLAND BUFFER
- ▨ LESS AND EXCEPT

### NOTICE

FLORIDA STATUTE 177.091 (27)  
 THIS PLAT, AS RECORDED IN ITS GRAPHIC FORM, IS THE OFFICIAL DEPICTION OF THE SUBDIVIDED LANDS DESCRIBED HEREIN AND WILL IN NO CIRCUMSTANCES BE SUPPLANTED IN AUTHORITY BY ANY OTHER GRAPHIC OR DIGITAL FORM OF THIS PLAT. THERE MAY BE ADDITIONAL RESTRICTIONS THAT ARE NOT RECORDED ON THIS PLAT THAT MAY BE FOUND IN THE PUBLIC RECORDS OF THIS COUNTY.

### WALTON COUNTY STATEMENT

ALL PUBLIC AREAS SHOWN ON THIS PLAT, UNLESS OTHERWISE STATED, SHALL BE DEEMED TO HAVE BEEN DEDICATED TO THE PUBLIC FOR THE USES AND PURPOSES HERON STATED. HOWEVER, NOTHING HEREIN SHALL BE CONSTRUED AS CREATING AN OBLIGATION UPON WALTON COUNTY TO PERFORM ANY ACT OF CONSTRUCTION OR MAINTENANCE WITHIN SUCH DEDICATED AREAS, EXCEPT WHEN THE OBLIGATION IS VOLUNTARILY ACCEPTED BY THE GOVERNING BODY OF WALTON COUNTY, FLORIDA. THE MERE RECORDING OF THIS PLAT DOES NOT CONSTITUTE ACCEPTANCE FOR ANY ACT OF CONSTRUCTION OR MAINTENANCE.

**INNERLIGHT ENGINEERING CORPORATION**  
 THE APPLIED SCIENCE OF SUCCESS

11490 EMERALD COAST PARKWAY, SUITE 2W  
 MIRAMAR BEACH | FLORIDA | 32550  
 LB#7927 | TELEPHONE: 850.424.5855

WATERSOUND CAMP CREEK - PHASE 2B



# WATERSOUND CAMP CREEK - PHASE 2B

## A PLANNED UNIT DEVELOPMENT

### SITUATED IN SECTION 22, 23, 26, & 27 - TOWNSHIP 3 SOUTH - RANGE 18 WEST

### WALTON COUNTY, FLORIDA

U.S. HIGHWAY 98  
(R/W VARIES)

### SHEET INDEX:

- 1 - DEDICATIONS, CERTIFICATIONS, DESCRIPTION
- 2 - KEY SHEET
- 3 - BOUNDARY LOCATION INFORMATION
- 4 - BOUNDARY LOCATION INFORMATION
- 5 - BOUNDARY LOCATION INFORMATION
- 6 - BOUNDARY LOCATION INFORMATION
- 7 - BOUNDARY LOCATION INFORMATION
- 8 - LESS AND EXCEPT LOCATION INFORMATION
- 9 - WETLAND BUFFER LOCATION INFORMATION
- 10 - WETLAND BUFFER LOCATION INFORMATION
- 11 - WETLAND BUFFER LOCATION INFORMATION
- 12 - WETLAND BUFFER LOCATION INFORMATION

### ABBREVIATIONS

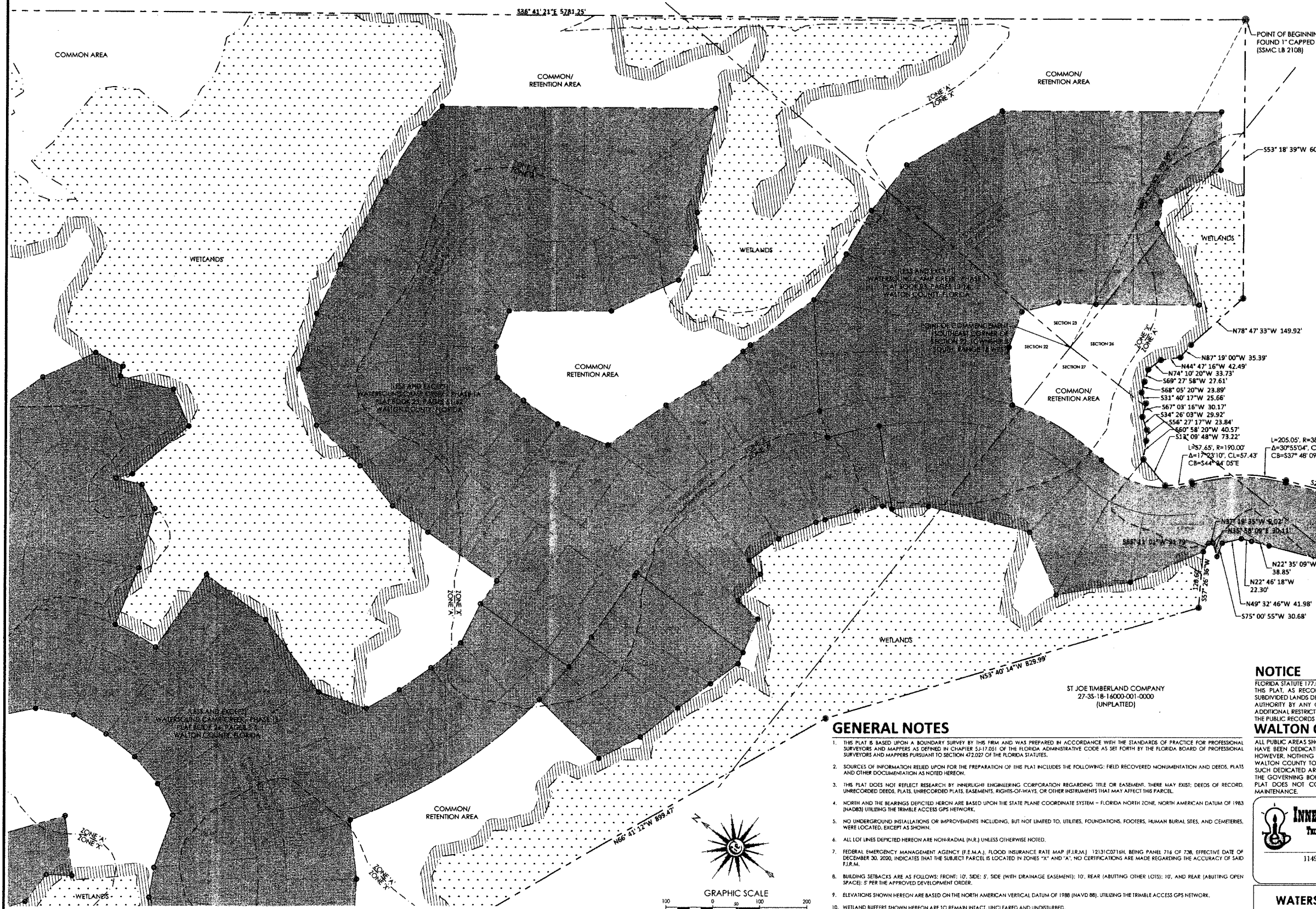
R/W	RIGHT-OF-WAY
N	NORTH
S	SOUTH
E	EAST
W	WEST
LB	LICENSED BUSINESS
MFFE	MINIMUM FINISHED FLOOR ELEVATION
°	DEGREES WHEN USED IN A BEARING OR ANGLE
'	MINUTES WHEN USED IN A BEARING OR ANGLE
"	SECONDS WHEN USED IN A BEARING OR ANGLE
+	FEET OR DECIMAL THEREOF WHEN USED IN A DIMENSION
-	INCHES WHEN USED IN A DIMENSION
±	MORE OR LESS
BSL	BUILDING SETBACK LINE
UTE	UTILITY EASEMENT
CL	CHORD LENGTH
CB	CHORD BEARING
BFE	BASE FLOOD ELEVATION
L	ARC LENGTH

### LEGEND

- PERMANENT REFERENCE MONUMENT (PRM) SET 1/2" IRON PIN (PRM 7927)
- PERMANENT CONTROL POINT (PCP) SET NAIL & DISK (PCP 7927)
- ⊙ PERMANENT REFERENCE MONUMENT (PRM) FOUND 1/2" IRON PIN (PRM 7927)
- ⊕ FOUND 1" CAPPED IRON PIN (SSMC LB 2108) (STAMPED PRM)
- ▨ WETLANDS
- ▨ 25' WETLAND BUFFER
- ▨ LESS AND EXCEPT

ST JOE TIMBERLAND COMPANY  
26-35-18-16000-001-0050  
(UNPLATTED)

WATERSOUND PARKWAY SOUTH  
(O.R. BOOK 3162, PAGE 451)  
WALTON COUNTY, FLORIDA



### GENERAL NOTES

1. THIS PLAT IS BASED UPON A BOUNDARY SURVEY BY THIS FIRM AND WAS PREPARED BY ACCORDANCE WITH THE STANDARDS OF PRACTICE FOR PROFESSIONAL SURVEYORS AND MAPPERS AS DEFINED IN CHAPTER 5J-17.051 OF THE FLORIDA ADMINISTRATIVE CODE AS SET FORTH BY THE FLORIDA BOARD OF PROFESSIONAL SURVEYORS AND MAPPERS PURSUANT TO SECTION 472.027 OF THE FLORIDA STATUTES.
2. SOURCES OF INFORMATION RELIED UPON FOR THE PREPARATION OF THIS PLAT INCLUDES THE FOLLOWING: FIELD RECOVERED MONUMENTATION AND DEEDS, PLATS AND OTHER DOCUMENTATION AS NOTED HEREON.
3. THIS PLAT DOES NOT REFLECT RESEARCH BY INNERLIGHT ENGINEERING CORPORATION REGARDING TITLE OR EASEMENT, THERE MAY EXIST; DEEDS OF RECORD, UNRECORDED DEEDS, PLATS, UNRECORDED PLATS, EASEMENTS, RIGHTS-OF-WAYS, OR OTHER INSTRUMENTS THAT MAY AFFECT THIS PARCEL.
4. NORTH AND THE BEARINGS DEPICTED HEREON ARE BASED UPON THE STATE PLANE COORDINATE SYSTEM - FLORIDA NORTH ZONE, NORTH AMERICAN DATUM OF 1983 (NAD83) UTILIZING THE TRIMBLE ACCESS GPS NETWORK.
5. NO UNDERGROUND INSTALLATIONS OR IMPROVEMENTS INCLUDING, BUT NOT LIMITED TO, UTILITIES, FOUNDATIONS, FOOTERS, HUMAN BURIAL SITES, AND CEMETERIES, WERE LOCATED, EXCEPT AS SHOWN.
6. ALL LOT LINES DEPICTED HEREON ARE NON-RADIAL (N.R.) UNLESS OTHERWISE NOTED.
7. FEDERAL EMERGENCY MANAGEMENT AGENCY (F.E.M.A.), FLOOD INSURANCE RATE MAP (F.I.R.M.) 12131C0714H, BEING PANEL 216 OF 738, EFFECTIVE DATE OF DECEMBER 30, 2020, INDICATES THAT THE SUBJECT PARCEL IS LOCATED IN ZONES "X" AND "A"; NO CERTIFICATIONS ARE MADE REGARDING THE ACCURACY OF SAID F.I.R.M.
8. BUILDING SETBACKS ARE AS FOLLOWS: FRONT: 10'; SIDE: 5'; SIDE (WITH DRAINAGE EASEMENT): 10'; REAR (ABUTTING OTHER LOTS): 10'; AND REAR (ABUTTING OPEN SPACE): 5' PER THE APPROVED DEVELOPMENT ORDER.
9. ELEVATIONS SHOWN HEREON ARE BASED ON THE NORTH AMERICAN VERTICAL DATUM OF 1988 (NAVD 88), UTILIZING THE TRIMBLE ACCESS GPS NETWORK.
10. WETLAND BUFFERS SHOWN HEREON ARE TO REMAIN INTACT, UNCLEARED AND UNDISTURBED.
11. MINIMUM FINISHED FLOOR ELEVATIONS SHOWN HEREON ARE BASED ON A GRADING AND DRAINAGE PLAN PROVIDED BY KIMLEY HORN DATED JULY OF 2019.
12. BASE FLOOD ELEVATIONS SHOWN HEREON ARE BASED ON A FLOOD STUDY PREPARED BY KIMLEY HORN DATED JANUARY OF 2019.

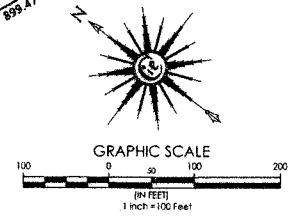
### NOTICE

FLORIDA STATUTE 177.091 (27)  
THIS PLAT, AS RECORDED IN ITS GRAPHIC FORM, IS THE OFFICIAL DEPICTION OF THE SUBDIVIDED LANDS DESCRIBED HEREIN AND WILL IN NO CIRCUMSTANCES BE SUPPLANTED IN AUTHORITY BY ANY OTHER GRAPHIC OR DIGITAL FORM OF THIS PLAT. THERE MAY BE ADDITIONAL RESTRICTIONS THAT ARE NOT RECORDED ON THIS PLAT THAT MAY BE FOUND IN THE PUBLIC RECORDS OF THIS COUNTY.

### WALTON COUNTY STATEMENT

ALL PUBLIC AREAS SHOWN ON THIS PLAT, UNLESS OTHERWISE STATED, SHALL BE DEEMED TO HAVE BEEN DEDICATED TO THE PUBLIC FOR THE USES AND PURPOSES HEREON STATED. HOWEVER, NOTHING HEREIN SHALL BE CONSTRUED AS CREATING AN OBLIGATION UPON WALTON COUNTY TO PERFORM ANY ACT OF CONSTRUCTION OR MAINTENANCE WITHIN SUCH DEDICATED AREAS, EXCEPT WHEN THE OBLIGATION IS VOLUNTARILY ACCEPTED BY THE GOVERNING BODY OF WALTON COUNTY, FLORIDA. THE MERE RECORDING OF THIS PLAT DOES NOT CONSTITUTE ACCEPTANCE FOR ANY ACT OF CONSTRUCTION OR MAINTENANCE.

**INNERLIGHT ENGINEERING CORPORATION**  
 THE APPLIED INTELLIGENCE OF SUCCESS  
 11490 EMERALD COAST PARKWAY, SUITE 2W  
 MIRAMAR BEACH | FLORIDA | 32550  
 LB#7927 | TELEPHONE: 850.424.5855



### WATERSOUND CAMP CREEK - PHASE 2B

# WATERSOUND CAMP CREEK - PHASE 2B

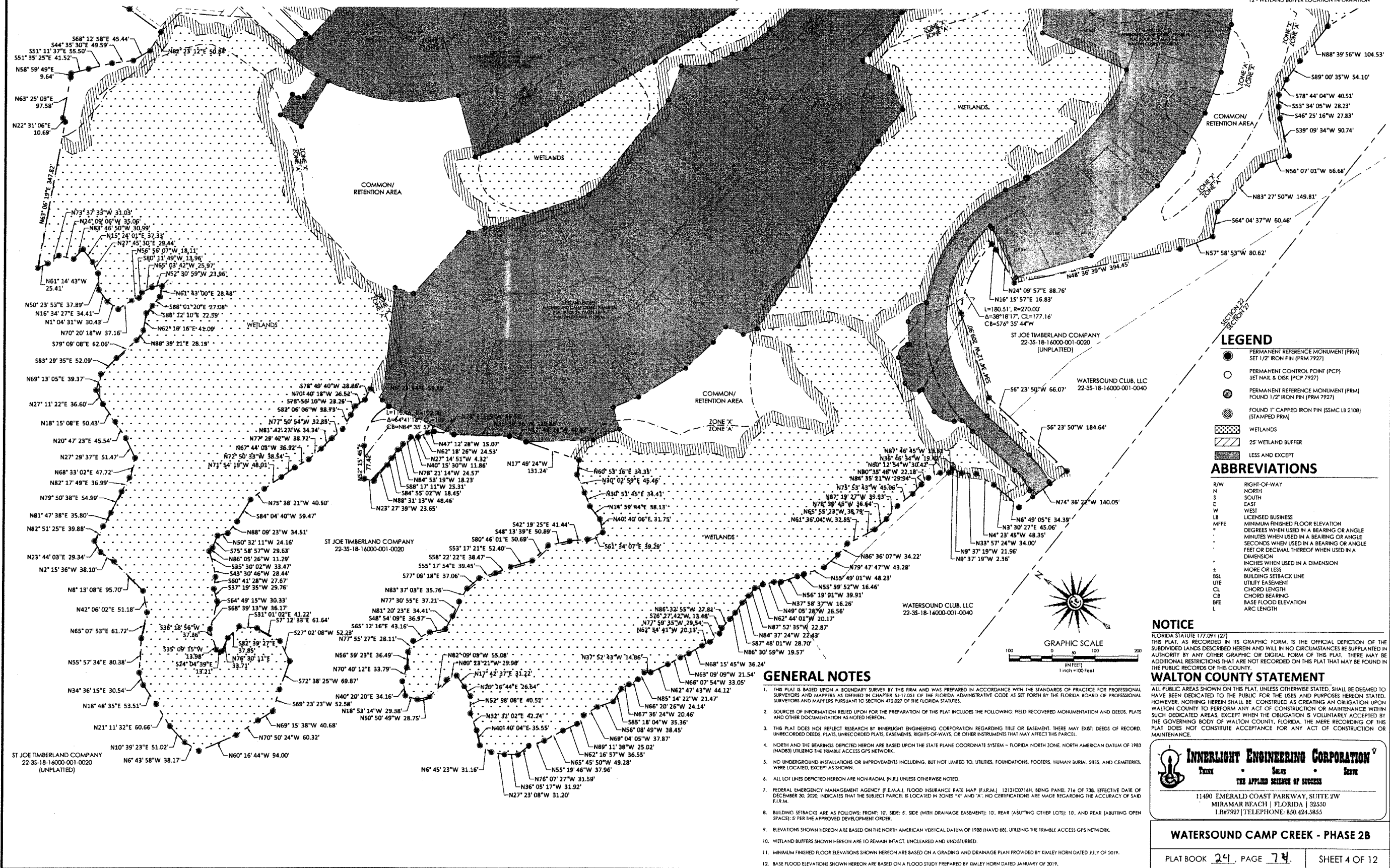
A PLANNED UNIT DEVELOPMENT

SITUATED IN SECTION 22, 23, 26, & 27 - TOWNSHIP 3 SOUTH - RANGE 18 WEST

WALTON COUNTY, FLORIDA

## SHEET INDEX:

- 1 - DEDICATIONS, CERTIFICATIONS, DESCRIPTION
- 2 - KEY SHEET
- 3 - BOUNDARY LOCATION INFORMATION
- 4 - BOUNDARY LOCATION INFORMATION
- 5 - BOUNDARY LOCATION INFORMATION
- 6 - BOUNDARY LOCATION INFORMATION
- 7 - BOUNDARY LOCATION INFORMATION
- 8 - LESS AND EXCEPT LOCATION INFORMATION
- 9 - WETLAND BUFFER LOCATION INFORMATION
- 10 - WETLAND BUFFER LOCATION INFORMATION
- 11 - WETLAND BUFFER LOCATION INFORMATION
- 12 - WETLAND BUFFER LOCATION INFORMATION

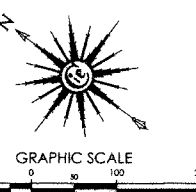


### LEGEND

- PERMANENT REFERENCE MONUMENT (PRM) SET 1/2" IRON PIN (PRM 7927)
- PERMANENT CONTROL POINT (PCP) SET NAIL & DISK (PCP 7927)
- PERMANENT REFERENCE MONUMENT (PRM) FOUND 1/2" IRON PIN (PRM 7927)
- FOUND 1" CAPPED IRON PIN (SSMC LB 2108) (STAMPED PRM)
- WETLANDS
- 25' WETLAND BUFFER
- LESS AND EXCEPT

### ABBREVIATIONS

R/W	RIGHT-OF-WAY
N	NORTH
S	SOUTH
E	EAST
W	WEST
LB	LICENSED BUSINESS
MFFE	MINIMUM FINISHED FLOOR ELEVATION
DE	DEGREES WHEN USED IN A BEARING OR ANGLE
MIN	MINUTES WHEN USED IN A BEARING OR ANGLE
SEC	SECONDS WHEN USED IN A BEARING OR ANGLE
FEET	FEET OR DECIMAL THEREOF WHEN USED IN A DIMENSION
INCHES	INCHES WHEN USED IN A DIMENSION
±	MORE OR LESS
BSL	BUILDING SETBACK LINE
UTE	UTILITY EASEMENT
CL	CHORD LENGTH
CB	CHORD BEARING
BFE	BASE FLOOD ELEVATION
L	ARC LENGTH



### GENERAL NOTES

1. THIS PLAN IS BASED UPON A BOUNDARY SURVEY BY THE FIRM AND WAS PREPARED IN ACCORDANCE WITH THE STANDARDS OF PRACTICE FOR PROFESSIONAL SURVEYORS AND MAPPERS AS DEFINED IN CHAPTER 5J-17.051 OF THE FLORIDA ADMINISTRATIVE CODE AS SET FORTH BY THE FLORIDA BOARD OF PROFESSIONAL SURVEYORS AND MAPPERS PURSUANT TO SECTION 472.027 OF THE FLORIDA STATUTES.
2. SOURCES OF INFORMATION RELIED UPON FOR THE PREPARATION OF THIS PLAN INCLUDES THE FOLLOWING: FIELD RECOVERED MONUMENTATION AND DEEDS, PLATS AND OTHER DOCUMENTATION AS NOTED HEREON.
3. THIS PLAN DOES NOT REFLECT RESEARCH BY INNERLIGHT ENGINEERING CORPORATION REGARDING TITLE OR EASEMENT. THERE MAY EXIST DEEDS OF RECORD, UNRECORDED DEEDS, PLATS, UNRECORDED PLATS, EASEMENTS, RIGHTS-OF-WAYS, OR OTHER INSTRUMENTS THAT MAY AFFECT THIS PARCEL.
4. NORTH AND THE BEARINGS DEPICTED HEREON ARE BASED UPON THE STATE PLANE COORDINATE SYSTEM - FLORIDA NORTH ZONE, NORTH AMERICAN DATUM OF 1983 (NAD83) UTILIZING THE TRIMBLE ACCESS GPS NETWORK.
5. NO UNDERGROUND INSTALLATIONS OR IMPROVEMENTS INCLUDING, BUT NOT LIMITED TO, UTILITIES, FOUNDATIONS, FOOTERS, HUMAN BURIAL SITES, AND CEMETERIES, WERE LOCATED, EXCEPT AS SHOWN.
6. ALL LOT LINES DEPICTED HEREON ARE NON-RADIAL (N.R.) UNLESS OTHERWISE NOTED.
7. FEDERAL EMERGENCY MANAGEMENT AGENCY (FEMA), FLOOD INSURANCE RATE MAP (FIRM) 12131C0214H, BEING PANEL 714 OF 738, EFFECTIVE DATE OF DECEMBER 30, 2020, INDICATES THAT THE SUBJECT PARCEL IS LOCATED IN ZONES "X" AND "A"; NO CERTIFICATIONS ARE MADE REGARDING THE ACCURACY OF SAID FIRM.
8. BUILDING SETBACKS ARE AS FOLLOWS: FRONT: 10', SIDE: 5', SIDE (WITH DRAINAGE EASEMENT): 10', REAR (ABUTTING OTHER LOTS): 10', AND REAR (ABUTTING OPEN SPACE): 5' PER THE APPROVED DEVELOPMENT ORDER.
9. ELEVATIONS SHOWN HEREON ARE BASED ON THE NORTH AMERICAN VERTICAL DATUM OF 1988 (NAVD 88), UTILIZING THE TRIMBLE ACCESS GPS NETWORK.
10. WETLAND BUFFERS SHOWN HEREON ARE TO REMAIN INTACT UNCLEARED AND UNDISTURBED.
11. MINIMUM FINISHED FLOOR ELEVATIONS SHOWN HEREON ARE BASED ON A GRADING AND DRAINAGE PLAN PROVIDED BY KIMLEY HORN DATED JULY OF 2019.
12. BASE FLOOD ELEVATIONS SHOWN HEREON ARE BASED ON A FLOOD STUDY PREPARED BY KIMLEY HORN DATED JANUARY OF 2019.

### NOTICE

FLORIDA STATUTE 177.091 (27) THIS PLAN, AS RECORDED IN ITS GRAPHIC FORM, IS THE OFFICIAL DEPICTION OF THE SUBDIVIDED LANDS DESCRIBED HEREON AND WILL IN NO CIRCUMSTANCES BE SUPPLANTED IN AUTHORITY BY ANY OTHER GRAPHIC OR DIGITAL FORM OF THIS PLAN. THERE MAY BE ADDITIONAL RESTRICTIONS THAT ARE NOT RECORDED ON THIS PLAT THAT MAY BE FOUND IN THE PUBLIC RECORDS OF THIS COUNTY.

### WALTON COUNTY STATEMENT

ALL PUBLIC AREAS SHOWN ON THIS PLAT, UNLESS OTHERWISE STATED, SHALL BE DEEMED TO HAVE BEEN DEDICATED TO THE PUBLIC FOR THE USES AND PURPOSES HEREON STATED. HOWEVER, NOTHING HEREIN SHALL BE CONSTRUED AS CREATING AN OBLIGATION UPON WALTON COUNTY TO PERFORM ANY ACT OF CONSTRUCTION OR MAINTENANCE WITHIN SUCH DEDICATED AREAS, EXCEPT WHEN THE OBLIGATION IS VOLUNTARILY ACCEPTED BY THE GOVERNING BODY OF WALTON COUNTY, FLORIDA. THE MERE RECORDING OF THIS PLAT DOES NOT CONSTITUTE ACCEPTANCE FOR ANY ACT OF CONSTRUCTION OR MAINTENANCE.

**INNERLIGHT ENGINEERING CORPORATION**  
 THE APPLIED SCIENCE OF SUCCESS

11490 EMERALD COAST PARKWAY, SUITE 200  
 MIRAMAR BEACH | FLORIDA | 32550  
 1.877.927 | TELEPHONE: 850.424.5855

### WATERSOUND CAMP CREEK - PHASE 2B



# WATERSOUND CAMP CREEK - PHASE 2B

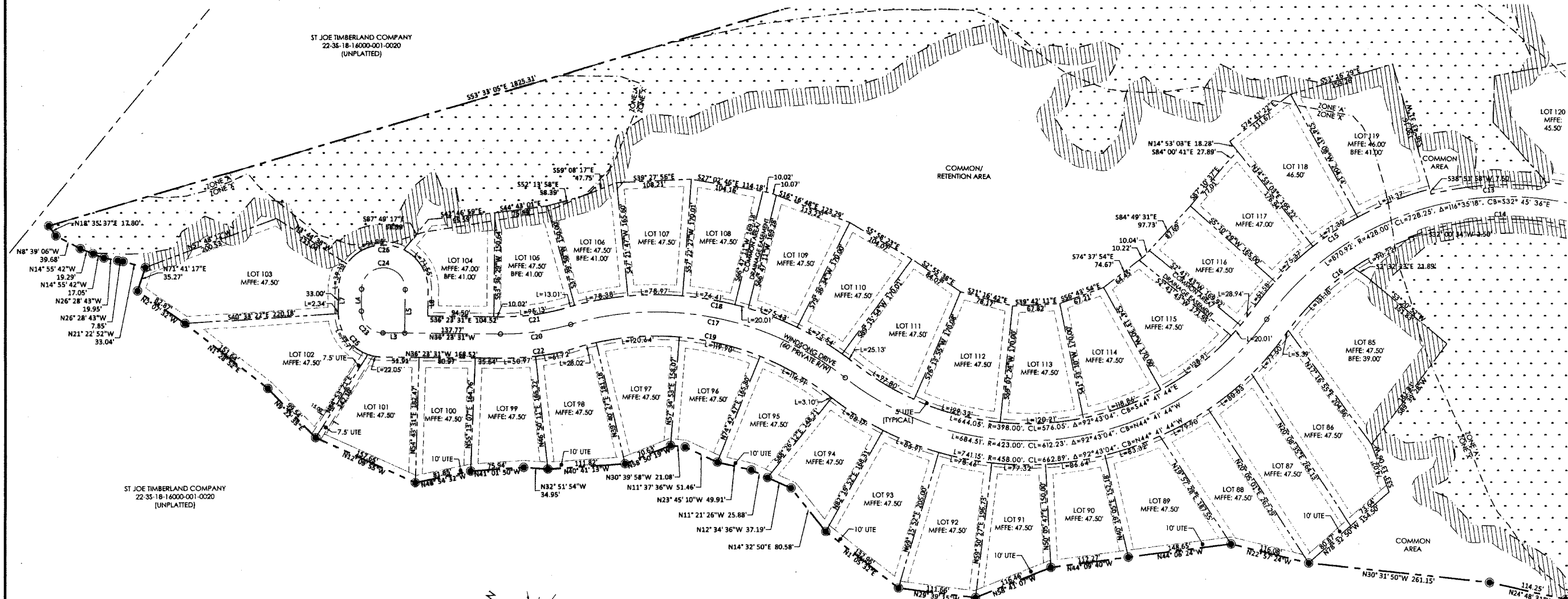
A PLANNED UNIT DEVELOPMENT

SITUATED IN SECTION 22, 23, 26, & 27 - TOWNSHIP 3 SOUTH - RANGE 18 WEST

WALTON COUNTY, FLORIDA

## SHEET INDEX:

- 1 - DEDICATIONS, CERTIFICATIONS, DESCRIPTION
- 2 - KEY SHEET
- 3 - BOUNDARY LOCATION INFORMATION
- 4 - BOUNDARY LOCATION INFORMATION
- 5 - BOUNDARY LOCATION INFORMATION
- 6 - BOUNDARY LOCATION INFORMATION
- 7 - BOUNDARY LOCATION INFORMATION
- 8 - LESS AND EXCEPT LOCATION INFORMATION
- 9 - WETLAND BUFFER LOCATION INFORMATION
- 10 - WETLAND BUFFER LOCATION INFORMATION
- 11 - WETLAND BUFFER LOCATION INFORMATION
- 12 - WETLAND BUFFER LOCATION INFORMATION



ST JOE TIMBERLAND COMPANY  
22-35-18-16000-001-0020  
(UNPLATTED)

ST JOE TIMBERLAND COMPANY  
22-35-18-16000-001-0020  
(UNPLATTED)

ST JOE TIMBERLAND COMPANY  
22-35-18-16000-001-0020  
(UNPLATTED)

LINE	BEARING	DISTANCE
L3	N54° 23' 31" W	31.25
L4	N83° 34' 29" E	31.75
L5	S53° 34' 29" W	43.00
L7	N53° 34' 29" E	33.00
L8	S53° 34' 29" W	38.00



Curve	Chord	Chord BE	Chord BW	Chord CE	Chord CW
C13	167.05	445.50	21° 28' 52"	S40° 23' 34" E	166.05
C14	271.52	395.50	39° 18' 20"	N38° 20' 16" W	266.05
C15	315.62	453.00	39° 55' 13"	S71° 06' 39" E	309.28
C16	226.79	393.00	33° 03' 49"	N74° 31' 21" W	223.45
C17	418.96	437.84	S4° 49' 33"	N25° 44' 58" W	403.16
C18	442.88	462.84	S4° 49' 33"	S28° 44' 58" E	426.18
C19	385.47	402.84	S4° 49' 33"	N25° 44' 58" W	370.93
C20	102.45	350.00	16° 46' 14"	N44° 46' 38" W	102.08
C21	95.13	325.00	16° 46' 14"	S44° 46' 38" E	94.79
C22	112.69	385.00	16° 46' 14"	N44° 46' 38" W	112.29
C23	49.09	31.25	90° 00' 00"	N8° 34' 29" E	44.19
C24	98.17	31.25	180° 00' 00"	S34° 23' 31" E	62.50
C25	102.10	65.00	90° 00' 00"	N8° 34' 29" E	91.92
C26	202.63	64.50	180° 00' 00"	S34° 23' 31" E	129.00

### LEGEND

- PERMANENT REFERENCE MONUMENT (PRM)  
SET 1/2" IRON PIN (PRM 7927)
- PERMANENT CONTROL POINT (PCP)  
SET NAIL & DISK (PCP 7927)
- ⊙ FOUND 1" CAPPED IRON PIN (SSMC LB 2108)  
(STAMPED PRM)
- ▨ WETLANDS
- ▨ 25' WETLAND BUFFER

### ABBREVIATIONS

- |      |  |
|------|--|
| R/W  | RIGHT-OF-WAY                                     |
| N    | NORTH  |
| S    | SOUTH  |
| E    | EAST   |
| W    | WEST   |
| LB   | LICENSED BUSINESS                                |
| MFFE | MINIMUM FINISHED FLOOR ELEVATION                 |
| °    | DEGREES WHEN USED IN A BEARING OR ANGLE          |
| '    | MINUTES WHEN USED IN A BEARING OR ANGLE          |
| "    | SECONDS WHEN USED IN A BEARING OR ANGLE          |
| FEET | FEET OR DECIMAL THEREOF WHEN USED IN A DIMENSION |
| "    | INCHES WHEN USED IN A DIMENSION                  |
| ±    | MORE OR LESS                                     |
| B/L  | BUILDING SETBACK LINE                            |
| UTE  | UTILITY EASEMENT                                 |
| CL   | CHORD LENGTH                                     |
| CB   | CHORD BEARING                                    |
| BFE  | BASE FLOOD ELEVATION                             |
| L    | ARC LENGTH                                       |

### GENERAL NOTES

1. THIS PLAN IS BASED UPON A BOUNDARY SURVEY BY THIS FIRM AND WAS PREPARED IN ACCORDANCE WITH THE STANDARDS OF PRACTICE FOR PROFESSIONAL SURVEYORS AND MAPPERS AS DEFINED IN CHAPTER 33-17.051 OF THE FLORIDA ADMINISTRATIVE CODE AS SET FORTH BY THE FLORIDA BOARD OF PROFESSIONAL SURVEYORS AND MAPPERS PURSUANT TO SECTION 472.027 OF THE FLORIDA STATUTES.
2. SOURCES OF INFORMATION RELIED UPON FOR THE PREPARATION OF THIS PLAN INCLUDES THE FOLLOWING: FIELD RECOVERED MONUMENTATION AND DEEDS, PLATS AND OTHER DOCUMENTATION AS NOTED HEREON.
3. THIS PLAN DOES NOT REFLECT RESEARCH BY INNERLIGHT ENGINEERING CORPORATION REGARDING TITLE OR EASEMENT. THERE MAY EXIST: DEEDS OF RECORD, UNRECORDED DEEDS, PLATS, UNRECORDED PLATS, EASEMENTS, RIGHTS-OF-WAYS, OR OTHER INSTRUMENTS THAT MAY AFFECT THIS PARCEL.
4. NORTH AND THE BEARINGS DEPICTED HEREON ARE BASED UPON THE STATE PLANE COORDINATE SYSTEM - FLORIDA NORTH ZONE, NORTH AMERICAN DATUM OF 1983 (NAD83) UTILIZING THE TRIMBLE ACCESS GPS NETWORK.
5. NO UNDERGROUND INSTALLATIONS OR IMPROVEMENTS INCLUDING, BUT NOT LIMITED TO, UTILITIES, FOUNDATIONS, FOOTERS, HUMAN BURIAL SITES, AND CEMETERIES, WERE LOCATED, EXCEPT AS SHOWN.
6. ALL LOT LINES DEPICTED HEREON ARE NON-RADIAL (N.R.) UNLESS OTHERWISE NOTED.
7. FEDERAL EMERGENCY MANAGEMENT AGENCY (F.E.M.A.), FLOOD INSURANCE RATE MAP (F.I.R.M.) 12131C0216H, BEING PANEL 716 OF 736, EFFECTIVE DATE OF DECEMBER 30, 2020, INDICATES THAT THE SUBJECT PARCEL IS LOCATED IN ZONES "X" AND "A". NO CERTIFICATIONS ARE MADE REGARDING THE ACCURACY OF SAID F.I.R.M.
8. BUILDING SETBACKS ARE AS FOLLOWS: FRONT: 10', SIDE: 5', SIDE (WITH DRAINAGE EASEMENTS): 10', REAR (ABUTTING OTHER LOTS): 10', AND REAR (ABUTTING OPEN SPACE): 5' PER THE APPROVED DEVELOPMENT ORDER.
9. ELEVATIONS SHOWN HEREON ARE BASED ON THE NORTH AMERICAN VERTICAL DATUM OF 1988 (NAVD 88), UTILIZING THE TRIMBLE ACCESS GPS NETWORK.
10. WETLAND BUFFERS SHOWN HEREON ARE TO REMAIN INTACT, UNCLEARED AND UNDISTURBED.
11. MINIMUM FINISHED FLOOR ELEVATIONS SHOWN HEREON ARE BASED ON A GRADING AND DRAINAGE PLAN PROVIDED BY KIMLEY HORN DATED JULY OF 2019.
12. BASE FLOOD ELEVATIONS SHOWN HEREON ARE BASED ON A FLOOD STUDY PREPARED BY KIMLEY HORN DATED JANUARY OF 2019.

### NOTICE

FLORIDA STATUTE 177.091 (27)  
THIS PLAN, AS RECORDED IN ITS GRAPHIC FORM, IS THE OFFICIAL DEPICTION OF THE SUBDIVIDED LANDS DESCRIBED HEREIN AND WILL IN NO CIRCUMSTANCES BE SUPPLANTED IN AUTHORITY BY ANY OTHER GRAPHIC OR DIGITAL FORM OF THIS PLAN. THERE MAY BE ADDITIONAL RESTRICTIONS THAT ARE NOT RECORDED ON THIS PLAN THAT MAY BE FOUND IN THE PUBLIC RECORDS OF THIS COUNTY.

### WALTON COUNTY STATEMENT

ALL PUBLIC AREAS SHOWN ON THIS PLAN, UNLESS OTHERWISE STATED, SHALL BE DEEMED TO HAVE BEEN DEDICATED TO THE PUBLIC FOR THE USES AND PURPOSES HEREON STATED; HOWEVER, NOTHING HEREIN SHALL BE CONSTRUED AS CREATING AN OBLIGATION UPON WALTON COUNTY TO PERFORM ANY ACT OF CONSTRUCTION OR MAINTENANCE WITHIN SUCH DEDICATED AREAS, EXCEPT WHEN THE OBLIGATION IS VOLUNTARILY ACCEPTED BY THE GOVERNING BODY OF WALTON COUNTY, FLORIDA. THE MERE RECORDING OF THIS PLAN DOES NOT CONSTITUTE ACCEPTANCE FOR ANY ACT OF CONSTRUCTION OR MAINTENANCE.

**INNERLIGHT ENGINEERING CORPORATION**  
 THE APPLIED SCIENCE OF SUCCESS  
 11490 EMERALD COAST PARKWAY, SUITE 21W  
 MIAMI BEACH | FLORIDA | 33250  
 LB#7927 | TEL: PHONE: 830.424.3855

WATERSOUND CAMP CREEK - PHASE 2B

# WATERSOUND CAMP CREEK - PHASE 2B

A PLANNED UNIT DEVELOPMENT

SITUATED IN SECTION 22, 23, 26, & 27 - TOWNSHIP 3 SOUTH - RANGE 18 WEST

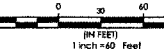
WALTON COUNTY, FLORIDA

## SHEET INDEX:

- 1 - DEDICATIONS, CERTIFICATIONS, DESCRIPTION
- 2 - KEY SHEET
- 3 - BOUNDARY LOCATION INFORMATION
- 4 - BOUNDARY LOCATION INFORMATION
- 5 - BOUNDARY LOCATION INFORMATION
- 6 - BOUNDARY LOCATION INFORMATION
- 7 - BOUNDARY LOCATION INFORMATION
- 8 - LESS AND EXCEPT LOCATION INFORMATION
- 9 - WETLAND BUFFER LOCATION INFORMATION
- 10 - WETLAND BUFFER LOCATION INFORMATION
- 11 - WETLAND BUFFER LOCATION INFORMATION
- 12 - WETLAND BUFFER LOCATION INFORMATION



GRAPHIC SCALE



## GENERAL NOTES

1. THIS PLAN IS BASED UPON A BOUNDARY SURVEY BY THIS FIRM AND WAS PREPARED IN ACCORDANCE WITH THE STANDARDS OF PRACTICE FOR PROFESSIONAL SURVEYORS AND MAPPERS AS DEFINED IN CHAPTER 53-170.01 OF THE FLORIDA ADMINISTRATIVE CODE AS SET FORTH BY THE FLORIDA BOARD OF PROFESSIONAL SURVEYORS AND MAPPERS PURSUANT TO SECTION 472.027 OF THE FLORIDA STATUTES.
2. SOURCES OF INFORMATION RELIED UPON FOR THE PREPARATION OF THIS PLAN INCLUDES THE FOLLOWING: FIELD RECOVERED MONUMENTATION AND DEEDS, PLATS AND OTHER DOCUMENTATION AS NOTED HEREON.
3. THIS PLAN DOES NOT REFLECT RESEARCH BY INNERLIGHT ENGINEERING CORPORATION REGARDING TITLE OR EASEMENT. THERE MAY EXIST DEEDS OF RECORD, UNRECORDED DEEDS, PLATS, UNRECORDED PLATS, EASEMENTS, RIGHTS-OF-WAY, OR OTHER INSTRUMENTS THAT MAY AFFECT THIS PARCEL.
4. NORTH AND THE BEARINGS DEPICTED HEREON ARE BASED UPON THE STATE PLANE COORDINATE SYSTEM - FLORIDA NORTH ZONE, NORTH AMERICAN DATUM OF 1983 (NAD83) UTILIZING THE TRIMBLE ACCESS GPS NETWORK.
5. NO UNDERGROUND INSTALLATIONS OR IMPROVEMENTS INCLUDING, BUT NOT LIMITED TO, UTILITIES, FOUNDATIONS, FOOTERS, HUMAN BURIAL SITES, AND CEMETERIES, WERE LOCATED, EXCEPT AS SHOWN.
6. ALL LOT LINES DEPICTED HEREON ARE NON-RADIAL (N.R.) UNLESS OTHERWISE NOTED.
7. FEDERAL EMERGENCY MANAGEMENT AGENCY (F.E.M.A.) FLOOD INSURANCE RATE MAP (F.I.R.M.) 12133C0104B, BEING PANEL 714 OF 708, EFFECTIVE DATE OF DECEMBER 30, 2020, INDICATES THAT THE SUBJECT PARCEL IS LOCATED IN ZONES "X" AND "A". NO CERTIFICATIONS ARE MADE REGARDING THE ACCURACY OF SAID F.I.R.M.
8. BUILDING SETBACKS ARE AS FOLLOWS: FRONT: 10', SIDE: 5' SIDE (WITH DRAINAGE EASEMENT); 10', REAR (ABUTTING OTHER LOTS); 10', AND REAR (ABUTTING OPEN SPACE); 5' PER THE APPROVED DEVELOPMENT ORDER.
9. ELEVATIONS SHOWN HEREON ARE BASED ON THE NORTH AMERICAN VERTICAL DATUM OF 1988 (NAVD 88), UTILIZING THE TRIMBLE ACCESS GPS NETWORK.
10. WETLAND BUFFERS SHOWN HEREON ARE TO REMAIN INTACT, UNCLEARED AND UNDISTURBED.
11. MINIMUM FINISHED FLOOR ELEVATIONS SHOWN HEREON ARE BASED ON A GRADING AND DRAINAGE PLAN PROVIDED BY KIMLEY HORN DATED JULY OF 2019.
12. BASE FLOOD ELEVATIONS SHOWN HEREON ARE BASED ON A FLOOD STUDY PREPARED BY KIMLEY HORN DATED JANUARY OF 2019.

## LEGEND

- 
- 
- 
- 
- 
- 
- 

## ABBREVIATIONS

- R/W RIGHT-OF-WAY
- N NORTH
- S SOUTH
- E EAST
- W WEST
- LB LICENSED BUSINESS
- MFFE MINIMUM FINISHED FLOOR ELEVATION
- DEGREES WHEN USED IN A BEARING OR ANGLE
- MINUTES WHEN USED IN A BEARING OR ANGLE
- SECONDS WHEN USED IN A BEARING OR ANGLE
- FEET OR DECIMAL THEREOF WHEN USED IN A DIMENSION
- INCHES WHEN USED IN A DIMENSION
- + MORE OR LESS
- BSL BUILDING SETBACK LINE
- UTE UTILITY EASEMENT
- CL CHORD LENGTH
- CB CHORD BEARING
- BFE BASE FLOOD ELEVATION
- L ARC LENGTH

## NOTICE

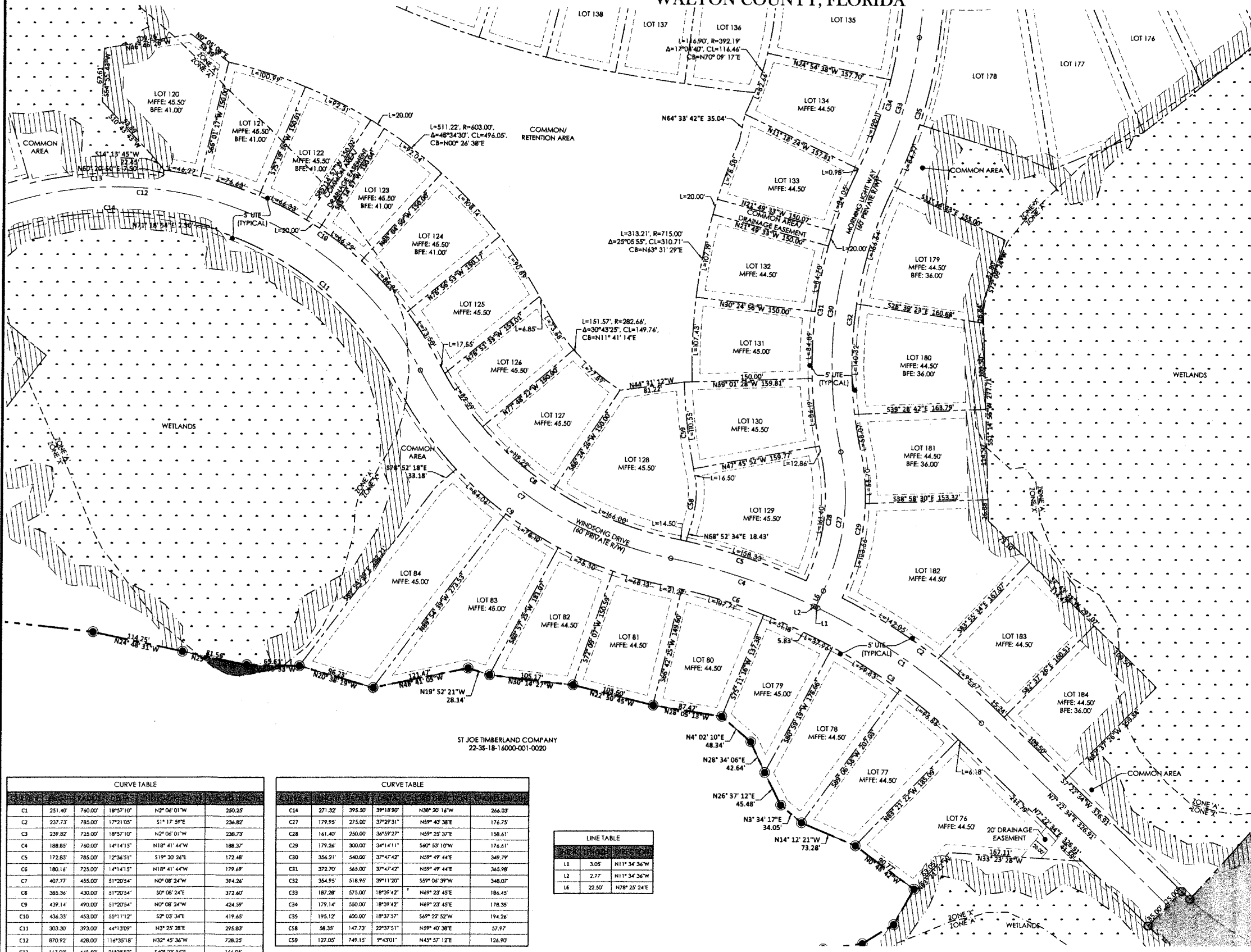
FLORIDA STATUTE 177.091 (27) THIS PLAN, AS RECORDED IN ITS GRAPHIC FORM, IS THE OFFICIAL DEPICTION OF THE SURVEYED LANDS DESCRIBED HEREIN AND WILL IN NO CIRCUMSTANCES BE SUPPLANTED IN AUTHORITY BY ANY OTHER GRAPHIC OR DIGITAL FORM OF THIS PLAN. THERE MAY BE ADDITIONAL RESTRICTIONS THAT ARE NOT RECORDED ON THIS PLAT THAT MAY BE FOUND IN THE PUBLIC RECORDS OF THIS COUNTY.

## WALTON COUNTY STATEMENT

ALL PUBLIC AREAS SHOWN ON THIS PLAT, UNLESS OTHERWISE STATED, SHALL BE DEEMED TO HAVE BEEN DEDICATED TO THE PUBLIC FOR THE USES AND PURPOSES HEREON STATED. HOWEVER, NOTHING HEREIN SHALL BE CONSTRUED AS CREATING AN OBLIGATION UPON WALTON COUNTY TO PERFORM ANY ACT OF CONSTRUCTION OR MAINTENANCE WITHIN SUCH DEDICATED AREAS, EXCEPT WHEN THE OBLIGATION IS VOLUNTARILY ACCEPTED BY THE GOVERNING BODY OF WALTON COUNTY, FLORIDA. THE MERE RECORDING OF THIS PLAT DOES NOT CONSTITUTE ACCEPTANCE FOR ANY ACT OF CONSTRUCTION OR MAINTENANCE.

**INNERLIGHT ENGINEERING CORPORATION**  
 THE APPLIED SCIENCE OF SUCCESS  
 11490 EMERALD COAST PARKWAY, SUITE 2W  
 MIRAMAR BEACH | FLORIDA | 32550  
 1JH7927 | TELEPHONE: 850.424.5855

WATERSOUND CAMP CREEK - PHASE 2B



Curve	Stationing	Bearing	Distance	MFFE	
C1	251.40	740.00	18°57'10"	N2°06'01"W	250.25
C2	237.73	785.00	17°21'05"	S1°17'59"E	236.82
C3	239.87	725.00	18°57'10"	N2°06'01"W	236.73
C4	188.85	760.00	14°14'15"	N18°41'44"W	188.37
C5	172.83	785.00	12°36'51"	S1°30'24"E	172.48
C6	180.16	725.00	14°14'15"	N18°41'44"W	179.69
C7	407.77	455.00	51°20'54"	N0°08'24"W	394.26
C8	385.36	430.00	51°20'54"	S0°08'24"E	372.60
C9	439.14	490.00	51°20'54"	N0°08'24"W	424.59
C10	434.33	453.00	53°11'12"	S2°03'34"E	419.65
C11	303.30	393.00	44°13'09"	N3°29'28"E	295.83
C12	870.92	428.00	116°35'18"	N32°45'36"W	728.25
C13	167.03	445.50	21°28'52"	S40°23'36"E	166.05

Curve	Stationing	Bearing	Distance	MFFE	
C14	271.32	395.50	39°18'30"	N38°20'14"W	266.03
C17	179.95	275.00	37°29'31"	N5°40'38"E	176.75
C18	161.40	250.00	34°59'27"	N5°25'37"E	158.61
C19	179.26	300.00	34°11'11"	S6°53'10"W	176.61
C20	356.21	540.00	37°47'42"	N5°49'44"E	349.79
C21	372.70	565.00	37°47'42"	N5°49'44"E	365.98
C22	354.95	518.95	39°11'20"	S5°06'39"W	348.07
C23	182.28	575.00	18°39'42"	N4°23'45"E	186.45
C24	179.14	550.00	18°39'42"	N4°23'45"E	178.35
C25	195.12	600.00	18°37'57"	S4°22'52"W	194.26
C28	58.33	147.73	22°37'51"	N5°40'38"E	57.97
C29	127.05	749.15	9°43'01"	N45°57'12"E	126.90

Line	Stationing	Bearing	MFFE
L1	3.05	N11°34'36"W	
L2	2.77	N11°34'36"W	
L6	22.50	N78°28'24"E	

ST JOE TIMBERLAND COMPANY  
 22-38-18-16000-001-0020

# WATERSOUND CAMP CREEK - PHASE 2B

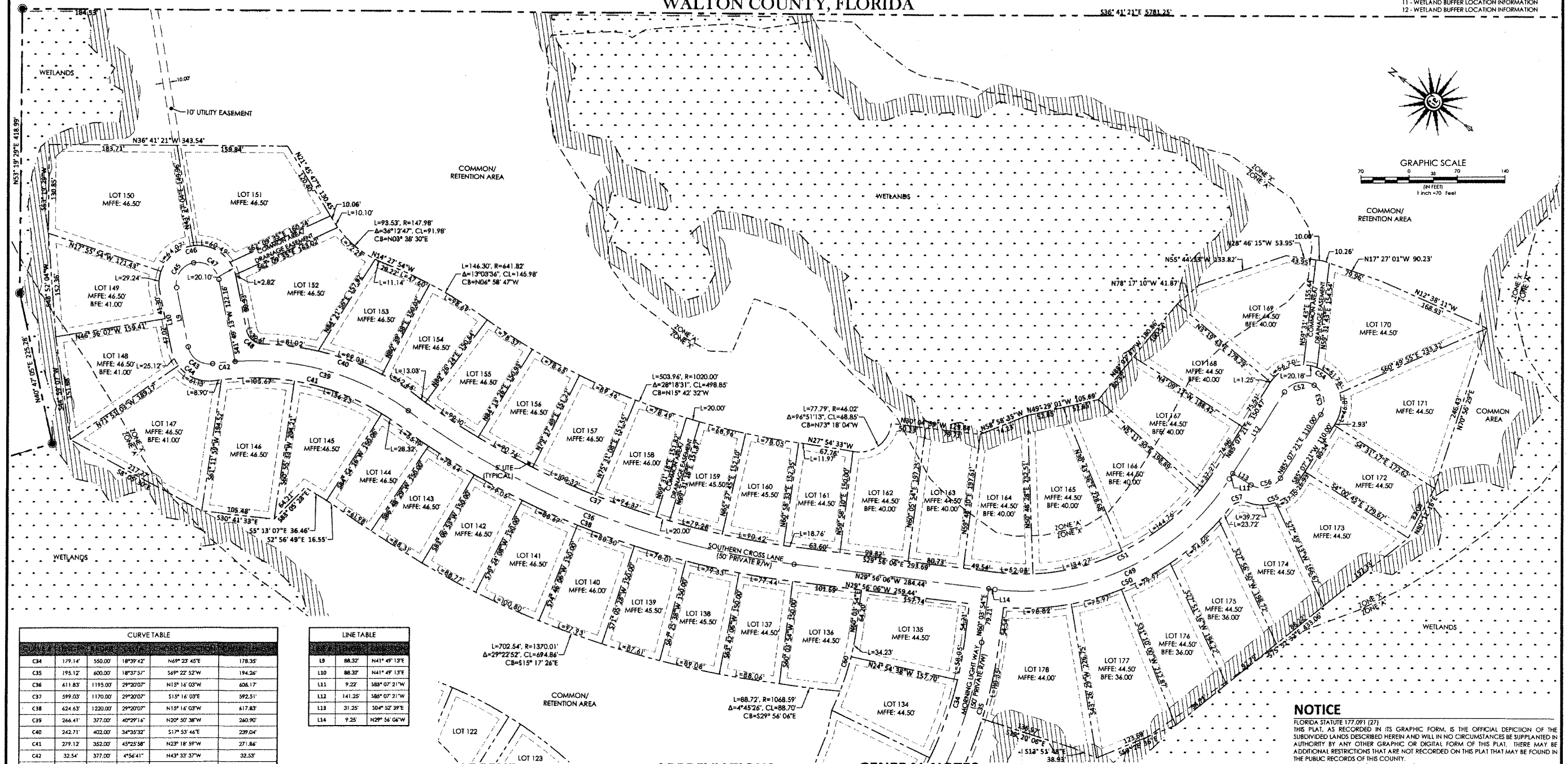
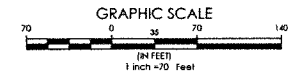
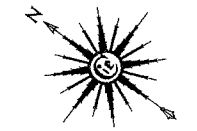
A PLANNED UNIT DEVELOPMENT

SITUATED IN SECTION 22, 23, 26, & 27 - TOWNSHIP 3 SOUTH - RANGE 18 WEST

WALTON COUNTY, FLORIDA

## SHEET INDEX:

- 1- DEDICATIONS, CERTIFICATIONS, DESCRIPTION
- 2- KEY SHEET
- 3- BOUNDARY LOCATION INFORMATION
- 4- BOUNDARY LOCATION INFORMATION
- 5- BOUNDARY LOCATION INFORMATION
- 6- BOUNDARY LOCATION INFORMATION
- 7- BOUNDARY LOCATION INFORMATION
- 8- LESS AND EXCEPT LOCATION INFORMATION
- 9- WETLAND BUFFER LOCATION INFORMATION
- 10- WETLAND BUFFER LOCATION INFORMATION
- 11- WETLAND BUFFER LOCATION INFORMATION
- 12- WETLAND BUFFER LOCATION INFORMATION



Curve	Stationing	Bearing	Distance	Stationing	Bearing	Distance
C34	179.14'	S50.00'	18°39'42"	N49° 22' 45"E	178.35'	
C35	195.12'	600.00'	18°37'57"	S49° 22' 52"W	194.26'	
C36	411.83'	1195.00'	29°20'07"	N13° 14' 03"W	406.17'	
C37	599.03'	1170.00'	29°20'07"	S13° 14' 03"E	592.51'	
C38	424.63'	1220.00'	29°20'07"	N13° 14' 03"W	417.83'	
C39	266.41'	377.00'	40°29'14"	N20° 50' 38"W	260.90'	
C40	242.71'	403.00'	34°33'32"	S17° 53' 46"E	239.04'	
C41	279.12'	352.00'	45°25'58"	N23° 18' 59"W	271.86'	
C42	32.54'	377.00'	4°56'41"	N43° 33' 37"W	32.53'	
C43	47.92'	31.25'	87°51'11"	N2° 04' 22"W	43.34'	
C44	86.25'	56.25'	87°51'11"	N2° 04' 22"W	78.05'	
C45	49.09'	31.25'	90°00'00"	N86° 49' 13"E	44.19'	
C46	176.71'	56.25'	180°00'00"	S48° 10' 47"E	112.50'	
C47	49.09'	31.25'	90°00'00"	S13° 10' 47"E	44.19'	
C48	32.59'	24.25'	77°00'45"	S3° 18' 51"W	30.20'	
C49	396.71'	350.00'	64°56'33"	N42° 24' 23"W	375.81'	
C50	373.00'	375.00'	56°59'24"	N46° 50' 14"W	357.81'	
C51	348.37'	325.00'	64°56'33"	S42° 24' 23"E	348.97'	
C52	49.09'	31.25'	90°00'00"	N44° 52' 39"W	44.19'	
C53	49.09'	31.25'	90°00'00"	N40° 07' 21"E	44.19'	
C54	176.71'	56.25'	180°00'00"	S4° 52' 39"E	112.50'	
C55	76.87'	56.25'	78°17'44"	N55° 43' 46"W	71.02'	
C56	49.09'	31.25'	90°00'00"	S49° 52' 39"E	44.19'	
C57	31.11'	24.50'	72°45'04"	N52° 57' 26"W	29.06'	
C58	86.80'	392.19'	12°40'51"	N46° 57' 22"E	86.62'	

Line	Stationing	Bearing	Distance
L9	86.32'	N41° 49' 13"E	
L10	86.32'	N41° 49' 13"E	
L11	9.22'	S88° 07' 21"W	
L12	141.25'	S88° 07' 21"W	
L13	31.25'	S04° 52' 39"E	
L14	9.25'	N29° 54' 04"W	

**LEGEND**

- PERMANENT REFERENCE MONUMENT (PRM)  
SET 1/2" IRON PIN (PRM 7927)
- PERMANENT CONTROL POINT (PCP)  
SET NAIL & DISK (PCP 7927)
- FOUND 1" CAPPED IRON PIN (SSMC LB 2108)  
(STAMPED PRM)
- ▨ WETLANDS
- ▨ 25' WETLAND BUFFER

**ABBREVIATIONS**

- R/W RIGHT-OF-WAY
- N NORTH
- S SOUTH
- E EAST
- W WEST
- LB LICENSED BUSINESS
- LB MFE MINIMUM FINISHED FLOOR ELEVATION
- DEGREES WHEN USED IN A BEARING OR ANGLE
- MINUTES WHEN USED IN A BEARING OR ANGLE
- SECONDS WHEN USED IN A BEARING OR ANGLE
- FEET OR DECIMAL THEREOF WHEN USED IN A DIMENSION
- INCHES WHEN USED IN A DIMENSION
- ± MORE OR LESS
- B/L BUILDING SETBACK LINE
- UTE UTILITY EASEMENT
- CL CHORD LENGTH
- CB CHORD BEARING
- BFE BASE FLOOR ELEVATION
- L ARC LENGTH

**GENERAL NOTES**

1. THIS PLAT IS BASED UPON A BOUNDARY SURVEY BY THIS FIRM AND WAS PREPARED IN ACCORDANCE WITH THE STANDARDS OF PRACTICE FOR PROFESSIONAL SURVEYORS AND MAPPERS AS DEFINED IN CHAPTER 5J-17.051 OF THE FLORIDA ADMINISTRATIVE CODE AS SET FORTH BY THE FLORIDA BOARD OF PROFESSIONAL SURVEYORS AND MAPPERS PURSUANT TO SECTION 472.027 OF THE FLORIDA STATUTES.
2. SOURCES OF INFORMATION RELIED UPON FOR THE PREPARATION OF THIS PLAT INCLUDES THE FOLLOWING: FIELD RECOVERED MONUMENTATION AND DEEDS, PLATS AND OTHER DOCUMENTATION AS NOTED HEREON.
3. THIS PLAT DOES NOT REFLECT RESEARCH BY INNERLIGHT ENGINEERING CORPORATION REGARDING TITLE OR EASEMENT. THERE MAY EXIST: DEEDS OF RECORD, UNRECORDED DEEDS, PLATS, UNRECORDED PLATS, EASEMENTS, RIGHTS-OF-WAY, OR OTHER INSTRUMENTS THAT MAY AFFECT THIS PARCEL.
4. NORTH AND THE BEARINGS DEPICTED HEREON ARE BASED UPON THE STATE PLANE COORDINATE SYSTEM - FLORIDA NORTH ZONE, NORTH AMERICAN DATUM OF 1983 (NAD83) UTILIZING THE TRIMBLE ACCESS GPS NETWORK.
5. NO UNDERGROUND INSTALLATIONS OR IMPROVEMENTS INCLUDING, BUT NOT LIMITED TO, UTILITIES, FOUNDATIONS, FOOTERS, HUMAN BURIAL SITES, AND CEMETERIES, WERE LOCATED, EXCEPT AS SHOWN.
6. ALL LOT LINES DEPICTED HEREON ARE NON-RADIAL (N.R.) UNLESS OTHERWISE NOTED.
7. FEDERAL EMERGENCY MANAGEMENT AGENCY (F.E.M.A.) FLOOD INSURANCE RATE MAP (F.I.R.M.) 1231C0714H, BEING PANEL 716 OF 738, EFFECTIVE DATE OF DECEMBER 30, 2020, INDICATES THAT THE SUBJECT PARCEL IS LOCATED IN ZONES "X" AND "A". NO CERTIFICATIONS ARE MADE REGARDING THE ACCURACY OF SAID F.I.R.M.
8. BUILDING SETBACKS ARE AS FOLLOWS: FRONT: 10'; SIDE: 5'; SIDE (WITH DRAINAGE EASEMENTS): 10'; REAR (ABUTTING OTHER LOTS): 10'; AND REAR (ABUTTING OPEN SPACE): 5' PER THE APPROVED DEVELOPMENT ORDER.
9. ELEVATIONS SHOWN HEREON ARE BASED ON THE NORTH AMERICAN VERTICAL DATUM OF 1988 (NAVD 88), UTILIZING THE TRIMBLE ACCESS GPS NETWORK.
10. WETLAND BUFFERS SHOWN HEREON ARE TO REMAIN INTACT, UNCLEARED AND UNDISTURBED.
11. MINIMUM FINISHED FLOOR ELEVATIONS SHOWN HEREON ARE BASED ON A GRADING AND DRAINAGE PLAN PROVIDED BY KIMLEY HORN DATED JULY OF 2019.
12. BASE FLOOD ELEVATIONS SHOWN HEREON ARE BASED ON A FLOOD STUDY PREPARED BY KIMLEY HORN DATED JANUARY OF 2019.

**NOTICE**  
FLORIDA STATUTE 177.091 (27)  
THIS PLAT, AS RECORDED IN ITS GRAPHIC FORM, IS THE OFFICIAL DEPICTION OF THE SUBDIVIDED LANDS DESCRIBED HEREIN AND WILL IN NO CIRCUMSTANCES BE SUPPLANTED IN AUTHORITY BY ANY OTHER GRAPHIC OR DIGITAL FORM OF THIS PLAT. THERE MAY BE ADDITIONAL RESTRICTIONS THAT ARE NOT RECORDED ON THIS PLAT THAT MAY BE FOUND IN THE PUBLIC RECORDS OF THIS COUNTY.

**WALTON COUNTY STATEMENT**  
ALL PUBLIC AREAS SHOWN ON THIS PLAT, UNLESS OTHERWISE STATED, SHALL BE DEEMED TO HAVE BEEN DEDICATED TO THE PUBLIC FOR THE USES AND PURPOSES HEREON STATED. HOWEVER, NOTHING HEREIN SHALL BE CONSTRUED AS CREATING AN OBLIGATION UPON WALTON COUNTY TO PERFORM ANY ACT OF CONSTRUCTION OR MAINTENANCE WITHIN SUCH DEDICATED AREAS, EXCEPT WHEN THE OBLIGATION IS VOLUNTARILY ACCEPTED BY THE GOVERNING BODY OF WALTON COUNTY, FLORIDA. THE MERE RECORDING OF THIS PLAT DOES NOT CONSTITUTE ACCEPTANCE FOR ANY ACT OF CONSTRUCTION OR MAINTENANCE.

**INNERLIGHT ENGINEERING CORPORATION**  
THE APPLIED SCIENCE OF SUCCESS  
11490 EMERALD COAST PARKWAY, SUITE 2W  
MIRAMAR BEACH | FLORIDA | 32550  
1.879.927 | TEL: 850.424.5855



# WATERSOUND CAMP CREEK - PHASE 2B

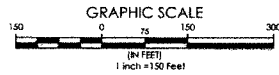
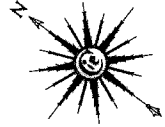
A PLANNED UNIT DEVELOPMENT

SITUATED IN SECTION 22, 23, 26, & 27 - TOWNSHIP 3 SOUTH - RANGE 18 WEST

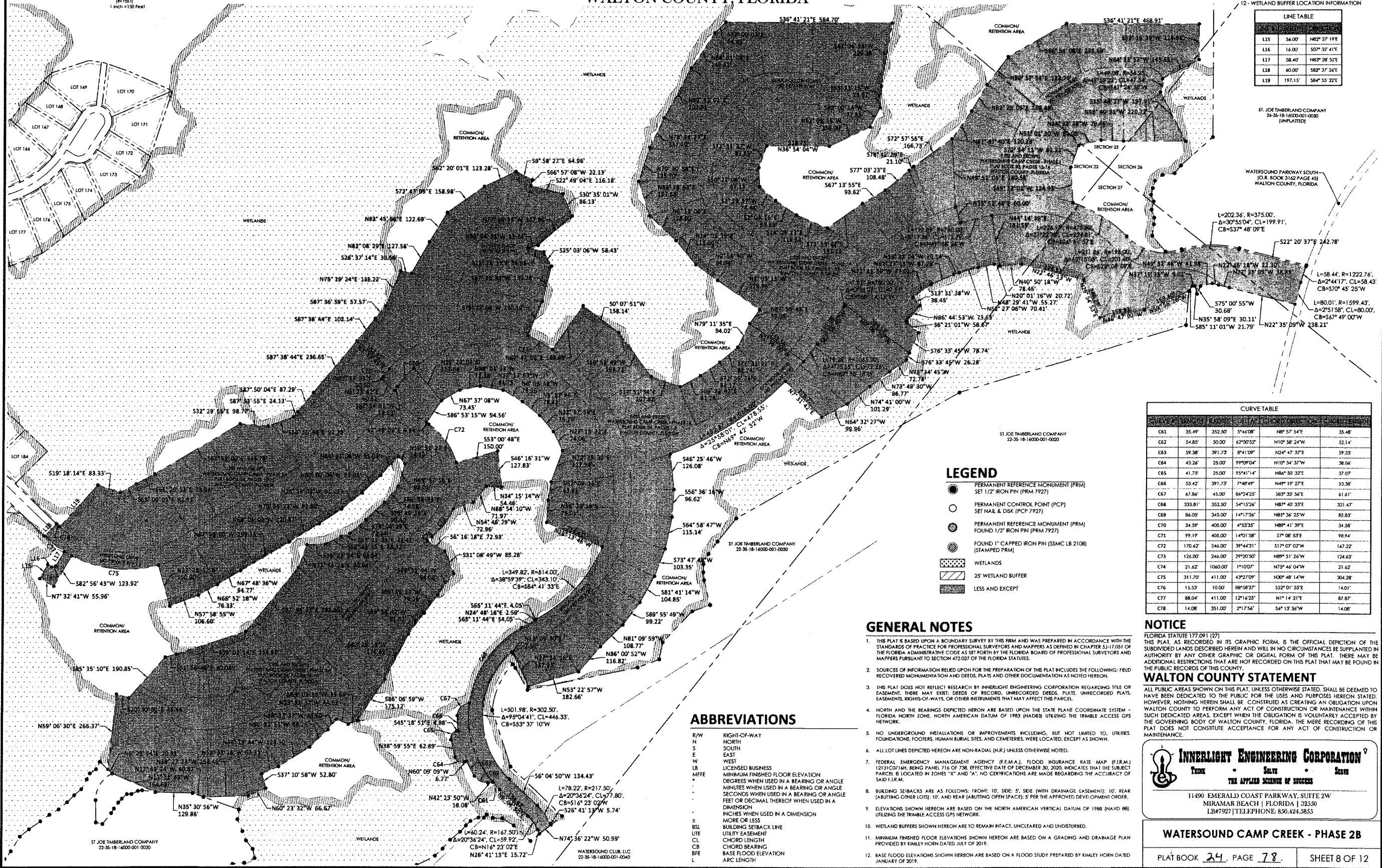
WALTON COUNTY, FLORIDA

### SHEET INDEX:

- 1 - DEDICATIONS, CERTIFICATIONS, DESCRIPTION
- 2 - KEY SHEET
- 3 - BOUNDARY LOCATION INFORMATION
- 4 - BOUNDARY LOCATION INFORMATION
- 5 - BOUNDARY LOCATION INFORMATION
- 6 - BOUNDARY LOCATION INFORMATION
- 7 - BOUNDARY LOCATION INFORMATION
- 8 - LESS AND EXCEPT LOCATION INFORMATION
- 9 - WETLAND BUFFER LOCATION INFORMATION
- 10 - WETLAND BUFFER LOCATION INFORMATION
- 11 - WETLAND BUFFER LOCATION INFORMATION
- 12 - WETLAND BUFFER LOCATION INFORMATION



LINE	START	END
L15	56.00	N82° 27' 19"E
L16	16.00	S07° 32' 41"E
L17	56.40	N83° 26' 52"E
L18	40.00	S82° 37' 24"E
L19	197.15	S84° 55' 22"E



ST. JOE TIMBERLAND COMPANY  
26-35-18-16000-001-0030  
(UNPLATTED)

WATERSOUND PARKWAY SOUTH  
(O.R. BOOK 312 PAGE 45)  
WALTON COUNTY, FLORIDA

L=202.36, R=375.00,  
Δ=30°55'04", CL=199.91',  
CB=537° 48' 09"E

L=58.44, R=1222.76,  
Δ=2°44'17", CL=58.43  
CB=570° 45' 25"W

L=80.01, R=1599.43,  
Δ=2°51'58", CL=80.00,  
CB=567° 49' 00"W

L=522° 20' 37"E 242.78'

L=575° 00' 55"W 30.68'

N35° 58' 09"E 30.11'

S85° 11' 01"W 21.79'

N22° 35' 09"W 238.21'

L=54.44, R=1222.76,  
Δ=2°44'17", CL=58.43  
CB=570° 45' 25"W

L=80.01, R=1599.43,  
Δ=2°51'58", CL=80.00,  
CB=567° 49' 00"W

LINE	START	END	BEARING	DISTANCE
C61	35.49	352.50	S°46'08"	35.48
C62	54.85	50.00	N10° 58' 24"W	52.14
C63	59.38	391.73	N24° 47' 37"E	59.33
C64	43.26	25.00	N10° 34' 37"W	38.04
C65	41.75	25.00	N64° 50' 32"E	37.07
C66	53.42	391.73	N49° 19' 27"E	53.36
C67	67.86	45.00	S83° 33' 56"E	61.61
C68	333.81	352.50	N87° 40' 33"E	321.47
C69	86.05	345.00	N85° 36' 55"W	85.83
C70	34.59	405.00	N89° 41' 39"E	34.58
C71	99.19	405.00	S7° 08' 53"E	98.94
C72	170.62	246.00	S17° 07' 02"W	167.22
C73	126.00	246.00	N89° 51' 26"W	124.63
C74	21.62	1060.00	N75° 46' 04"W	21.62
C75	311.70	411.00	N30° 48' 14"W	304.28
C76	15.53	10.00	S52° 01' 55"E	14.01
C77	88.04	411.00	N1° 14' 21"E	87.87
C78	14.08	351.00	S6° 13' 36"W	14.08

### LEGEND

- PERMANENT REFERENCE MONUMENT (PRM) SET 1/2" IRON PIN (PRM 7927)
- PERMANENT CONTROL POINT (PCP) SET NAIL & DISK (PCP 7927)
- PERMANENT REFERENCE MONUMENT (PRM) FOUND 1/2" IRON PIN (PRM 7927)
- FOUND 1" CAPPED IRON PIN (SSMC LB 2108) (STAMPED PRM)
- WETLANDS
- 25' WETLAND BUFFER
- LESS AND EXCEPT

### GENERAL NOTES

1. THIS PLAT IS BASED UPON A BOUNDARY SURVEY BY THIS FIRM AND WAS PREPARED IN ACCORDANCE WITH THE STANDARDS OF PRACTICE FOR PROFESSIONAL SURVEYORS AND MAPPERS AS DEFINED IN CHAPTER 5J-17.051 OF THE FLORIDA ADMINISTRATIVE CODE AS SET FORTH BY THE FLORIDA BOARD OF PROFESSIONAL SURVEYORS AND MAPPERS PURSUANT TO SECTION 472.02(7) OF THE FLORIDA STATUTES.
2. SOURCES OF INFORMATION RELEIED UPON FOR THE PREPARATION OF THIS PLAT INCLUDES THE FOLLOWING: FIELD RECOVERED MONUMENTATION AND DEEDS, PLATS AND OTHER DOCUMENTATION AS NOTED HEREON.
3. THIS PLAT DOES NOT REFLECT RESEARCH BY INNERLIGHT ENGINEERING CORPORATION REGARDING TITLE OR EASEMENT. THERE MAY EXIST DEEDS OF RECORD, UNRECORDED DEEDS, PLATS, UNCOORDINATED PLATS, EASEMENTS, RIGHTS-OF-WAYS, OR OTHER INSTRUMENTS THAT MAY AFFECT THIS PARCEL.
4. NORTH AND THE BEARINGS DEPICTED HEREON ARE BASED UPON THE STATE PLANE COORDINATE SYSTEM - FLORIDA NORTH ZONE, NORTH AMERICAN DATUM OF 1983 (NAD83). UTILITYING THE TRIMBLE ACCESS GPS NETWORK.
5. NO UNDERGROUND INSTALLATIONS OR IMPROVEMENTS INCLUDING, BUT NOT LIMITED TO, UTILITIES, FOUNDATIONS, FOOTERS, HUMAN BURIAL SITES, AND CEMETERIES, WERE LOCATED, EXCEPT AS SHOWN.
6. ALL LOT LINES DEPICTED HEREON ARE NON-RADIAL (N.R.), UNLESS OTHERWISE NOTED.
7. FEDERAL EMERGENCY MANAGEMENT AGENCY (F.E.M.A.), FLOOD INSURANCE RATE MAP (F.I.R.M.) 12151C0141H, BEING PANEL 716 OF 756 EFFECTIVE DATE OF DECEMBER 30, 2020, INDICATES THAT THE SUBJECT PARCEL IS LOCATED IN ZONES "X" AND "A". NO CERTIFICATIONS ARE MADE REGARDING THE ACCURACY OF SAID F.I.R.M.
8. BUILDING SETBACKS ARE AS FOLLOWS: FRONT: 10', SIDE: 5', SIDE (WITH DRAINAGE EASEMENTS): 10', REAR (ABUTTING OTHER LOTS): 10', AND REAR (ABUTTING OPEN SPACE): 5' PER THE APPROVED DEVELOPMENT ORDER.
9. ELEVATIONS SHOWN HEREON ARE BASED ON THE NORTH AMERICAN VERTICAL DATUM OF 1988 (NAVD 88). UTILITYING THE TRIMBLE ACCESS GPS NETWORK.
10. WETLAND BUFFERS SHOWN HEREON ARE TO REMAIN INTACT, UNCLEANED AND UNDISTURBED.
11. MINIMUM FINISHED FLOOR ELEVATIONS SHOWN HEREON ARE BASED ON A GRADING AND DRAINAGE PLAN PROVIDED BY EMLEY HORN DATED JULY OF 2019.
12. BASE FLOOD ELEVATIONS SHOWN HEREON ARE BASED ON A FLOOD STUDY PREPARED BY KIMLEY HORN DATED JANUARY OF 2019.

### ABBREVIATIONS

- |      |  |
|------|--|
| R/W  | RIGHT-OF-WAY                                     |
| N    | NORTH  |
| S    | SOUTH  |
| E    | EAST   |
| W    | WEST   |
| LB   | LICENSED BUSINESS                                |
| MBFE | MINIMUM FINISHED FLOOR ELEVATION                 |
| D    | DEGREES WHEN USED IN A BEARING OR ANGLE          |
| M    | MINUTES WHEN USED IN A BEARING OR ANGLE          |
| S    | SECONDS WHEN USED IN A BEARING OR ANGLE          |
| F    | FEET OR DECIMAL THEREOF WHEN USED IN A DIMENSION |
| IN   | INCHES WHEN USED IN A DIMENSION                  |
| ±    | MORE OR LESS                                     |
| BSL  | BUILDING SETBACK LINE                            |
| UTE  | UTILITY EASEMENT                                 |
| CL   | CHORD LENGTH                                     |
| CB   | CHORD BEARING                                    |
| BFE  | BASE FLOOD ELEVATION                             |
| L    | ARC LENGTH                                       |

### NOTICE

FLORIDA STATUTE 177.091 (2)  
THIS PLAT, AS RECORDED IN ITS GRAPHIC FORM, IS THE OFFICIAL DEPICTION OF THE SUBDIVIDED LANDS DESCRIBED HEREIN AND WILL IN NO CIRCUMSTANCES BE SUPPLANTED BY AUTHORITY BY ANY OTHER GRAPHIC OR DIGITAL FORM OF THIS PLAT. THERE MAY BE ADDITIONAL RESTRICTIONS THAT ARE NOT RECORDED ON THIS PLAT THAT MAY BE FOUND IN THE PUBLIC RECORDS OF THIS COUNTY.

### WALTON COUNTY STATEMENT

ALL PUBLIC AREAS SHOWN ON THIS PLAT, UNLESS OTHERWISE STATED, SHALL BE DEEMED TO HAVE BEEN DEDICATED TO THE PUBLIC FOR THE USES AND PURPOSES HEREOF STATED. HOWEVER, NOTHING HEREIN SHALL BE CONSTRUED AS CREATING AN OBLIGATION UPON WALTON COUNTY TO PERFORM ANY ACT OF CONSTRUCTION OR MAINTENANCE WITHIN SUCH DEDICATED AREAS, EXCEPT WHEN THE OBLIGATION IS VOLUNTARILY ACCEPTED BY THE GOVERNING BODY OF WALTON COUNTY, FLORIDA. THE MERE RECORDING OF THIS PLAT DOES NOT CONSTITUTE ACCEPTANCE FOR ANY ACT OF CONSTRUCTION OR MAINTENANCE.

**INNERLIGHT ENGINEERING CORPORATION**  
THE APPLIED SCIENCE OF SUCCESS

11490 EMERALD COAST PARKWAY, SUITE 2W  
MIRAMAR BEACH | FLORIDA | 32150  
LBW7927 | TELEPHONE: 850.424.5855



# WATERSOUND CAMP CREEK - PHASE 2B

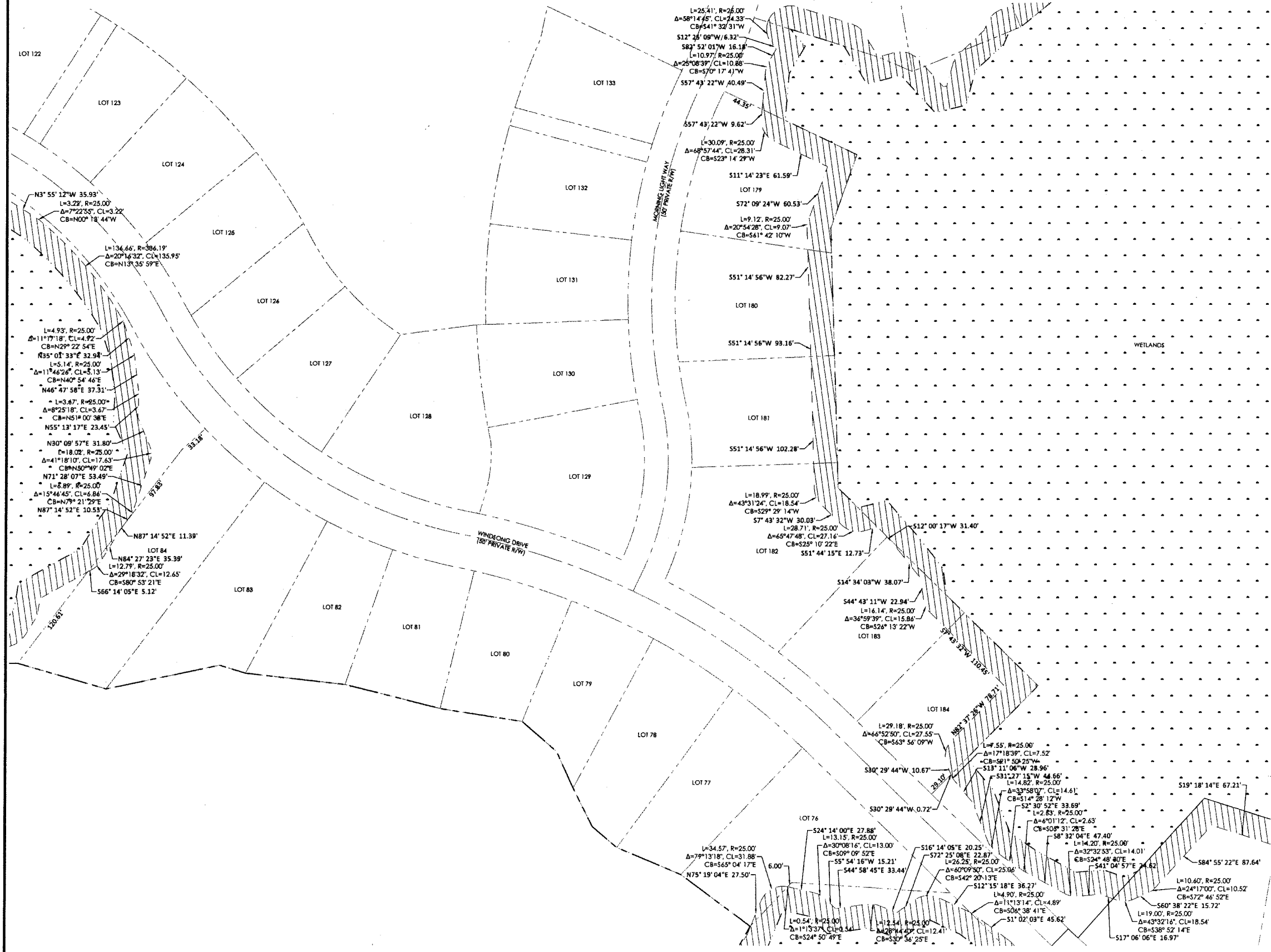
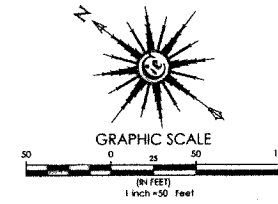
A PLANNED UNIT DEVELOPMENT

SITUATED IN SECTION 22, 23, 26, & 27 - TOWNSHIP 3 SOUTH - RANGE 18 WEST

WALTON COUNTY, FLORIDA

## SHEET INDEX:

- 1 - DEDICATIONS, CERTIFICATIONS, DESCRIPTION
- 2 - KEY SHEET
- 3 - BOUNDARY LOCATION INFORMATION
- 4 - BOUNDARY LOCATION INFORMATION
- 5 - BOUNDARY LOCATION INFORMATION
- 6 - BOUNDARY LOCATION INFORMATION
- 7 - BOUNDARY LOCATION INFORMATION
- 8 - LESS AND EXCEPT LOCATION INFORMATION
- 9 - WETLAND BUFFER LOCATION INFORMATION
- 10 - WETLAND BUFFER LOCATION INFORMATION
- 11 - WETLAND BUFFER LOCATION INFORMATION
- 12 - WETLAND BUFFER LOCATION INFORMATION



## LEGEND

- PERMANENT REFERENCE MONUMENT (PRM)  
SET 1/2" IRON PIN (PRM 7927)
- PERMANENT CONTROL POINT (PCP)  
SET NAIL & DISK (PCP 7927)
- FOUND 1" CAPPED IRON PIN (SSMC LB 2108)  
(STAMPED PRM)
- ▨ WETLANDS
- ▨ 25' WETLAND BUFFER

## ABBREVIATIONS

R/W	RIGHT-OF-WAY
N	NORTH
S	SOUTH
E	EAST
W	WEST
LB	LICENSED BUSINESS
MBFE	MINIMUM FINISHED FLOOR ELEVATION
Δ	DEGREES WHEN USED IN A BEARING OR ANGLE
'	MINUTES WHEN USED IN A BEARING OR ANGLE
"	SECONDS WHEN USED IN A BEARING OR ANGLE
FEET	FEET OR DECIMAL THEREOF WHEN USED IN A DIMENSION
"	INCHES WHEN USED IN A DIMENSION
±	MORE OR LESS
BSL	BUILDING SETBACK LINE
LITE	UTILITY EASEMENT
CL	CHORD LENGTH
CB	CHORD BEARING
BFE	BASE FLOOD ELEVATION
L	ARC LENGTH

## GENERAL NOTES

1. THIS PLAN IS BASED UPON A BOUNDARY SURVEY BY THIS FIRM AND WAS PREPARED IN ACCORDANCE WITH THE STANDARDS OF PRACTICE FOR PROFESSIONAL SURVEYORS AND MAPPERS AS DEFINED IN CHAPTER 5J-17.051 OF THE FLORIDA ADMINISTRATIVE CODE AS SET FORTH BY THE FLORIDA BOARD OF PROFESSIONAL SURVEYORS AND MAPPERS PURSUANT TO SECTION 472.022 OF THE FLORIDA STATUTES.
2. SOURCES OF INFORMATION RELED UPON FOR THE PREPARATION OF THIS PLAN INCLUDES THE FOLLOWING: FIELD RECOVERED MONUMENTATION AND DEEDS, PLATS AND OTHER DOCUMENTATION AS NOTED HEREON.
3. THIS PLAN DOES NOT REFLECT RESEARCH BY INNERLIGHT ENGINEERING CORPORATION REGARDING TITLE OR EASEMENT, THERE MAY EXIST; DEEDS OF RECORD, UNRECORDED DEEDS, PLATS, UNRECORDED PLATS, EASEMENTS, RIGHTS-OF-WAYS, OR OTHER INSTRUMENTS THAT MAY AFFECT THIS PARCEL.
4. NORTH AND THE BEARINGS DEPICTED HEREON ARE BASED UPON THE STATE PLANE COORDINATE SYSTEM - FLORIDA NORTH ZONE, NORTH AMERICAN DATUM OF 1983 (NAD83) UTILIZING THE TRIMBLE ACCESS GPS NETWORK.
5. NO UNDERGROUND INSTALLATIONS OR IMPROVEMENTS INCLUDING, BUT NOT LIMITED TO, UTILITIES, FOUNDATIONS, FOOTERS, HUMAN BURIAL SITES, AND CEMETERIES, WERE LOCATED, EXCEPT AS SHOWN.
6. ALL LOT LINES DEPICTED HEREON ARE NON-RADIAL (N.R.) UNLESS OTHERWISE NOTED.
7. FEDERAL EMERGENCY MANAGEMENT AGENCY (FEMA) 1. FLOOD INSURANCE RATE MAP (FIRM) 13130C0164, BENCH PANEL 714 OF 728, EFFECTIVE DATE OF DECEMBER 20, 2020, INDICATES THAT THE SUBJECT PARCEL IS LOCATED IN ZONES "X" AND "A". NO CERTIFICATIONS ARE MADE REGARDING THE ACCURACY OF SAID FIRM.
8. BUILDING SETBACKS ARE AS FOLLOWS: FRONT: 10', SIDE: 5' SIDE (WITH DRAINAGE EASEMENT); 10', REAR (ABUTTING OTHER LOTS); 10', AND REAR (ABUTTING OPEN SPACE); 5' PER THE APPROVED DEVELOPMENT ORDER.
9. ELEVATIONS SHOWN HEREON ARE BASED ON THE NORTH AMERICAN VERTICAL DATUM OF 1988 (NAVD 88), UTILIZING THE TRIMBLE ACCESS GPS NETWORK.
10. WETLAND BUFFERS SHOWN HEREON ARE TO REMAIN INTACT, UNCLEARED AND UNDISTURBED.
11. MINIMUM FINISHED FLOOR ELEVATIONS SHOWN HEREON ARE BASED ON A GRADING AND DRAINAGE PLAN PROVIDED BY KIMLEY HORN DATED JULY OF 2019.
12. BASE FLOOD ELEVATIONS SHOWN HEREON ARE BASED ON A FLOOD STUDY PREPARED BY KIMLEY HORN DATED JANUARY OF 2019.

## NOTICE

FLORIDA STATUTE 177.091 (27)  
THIS PLAN, AS RECORDED IN ITS GRAPHIC FORM, IS THE OFFICIAL DEPICTION OF THE SUBDIVIDED LANDS DESCRIBED HEREIN AND WILL IN NO CIRCUMSTANCES BE SUPPLANTED IN AUTHORITY BY ANY OTHER GRAPHIC OR DIGITAL FORM OF THIS PLAN. THERE MAY BE ADDITIONAL RESTRICTIONS THAT ARE NOT RECORDED ON THIS PLAT THAT MAY BE FOUND IN THE PUBLIC RECORDS OF THIS COUNTY.

## WALTON COUNTY STATEMENT

ALL PUBLIC AREAS SHOWN ON THIS PLAT, UNLESS OTHERWISE STATED, SHALL BE DEEMED TO HAVE BEEN DEDICATED TO THE PUBLIC FOR THE USES AND PURPOSES HEREON STATED. HOWEVER, NOTHING HEREIN SHALL BE CONSTRUED AS CREATING AN OBLIGATION UPON WALTON COUNTY TO PERFORM ANY ACT OF CONSTRUCTION OR MAINTENANCE WITHIN SUCH DEDICATED AREAS, EXCEPT WHEN THE OBLIGATION IS VOLUNTARILY ACCEPTED BY THE GOVERNING BODY OF WALTON COUNTY, FLORIDA. THE MERE RECORDING OF THIS PLAT DOES NOT CONSTITUTE ACCEPTANCE FOR ANY ACT OF CONSTRUCTION OR MAINTENANCE.

**INNERLIGHT ENGINEERING CORPORATION**  
 THINK • SAY • DO  
 THE APPLIED SCIENCE OF SUCCESS  
 11490 EMERALD COAST PARKWAY, SUITE 2W  
 MIRAMAR BEACH | FLORIDA | 32550  
 LB#7927 | TELEPHONE: 850.424.5855

# WATERSOUND CAMP CREEK - PHASE 2B

A PLANNED UNIT DEVELOPMENT

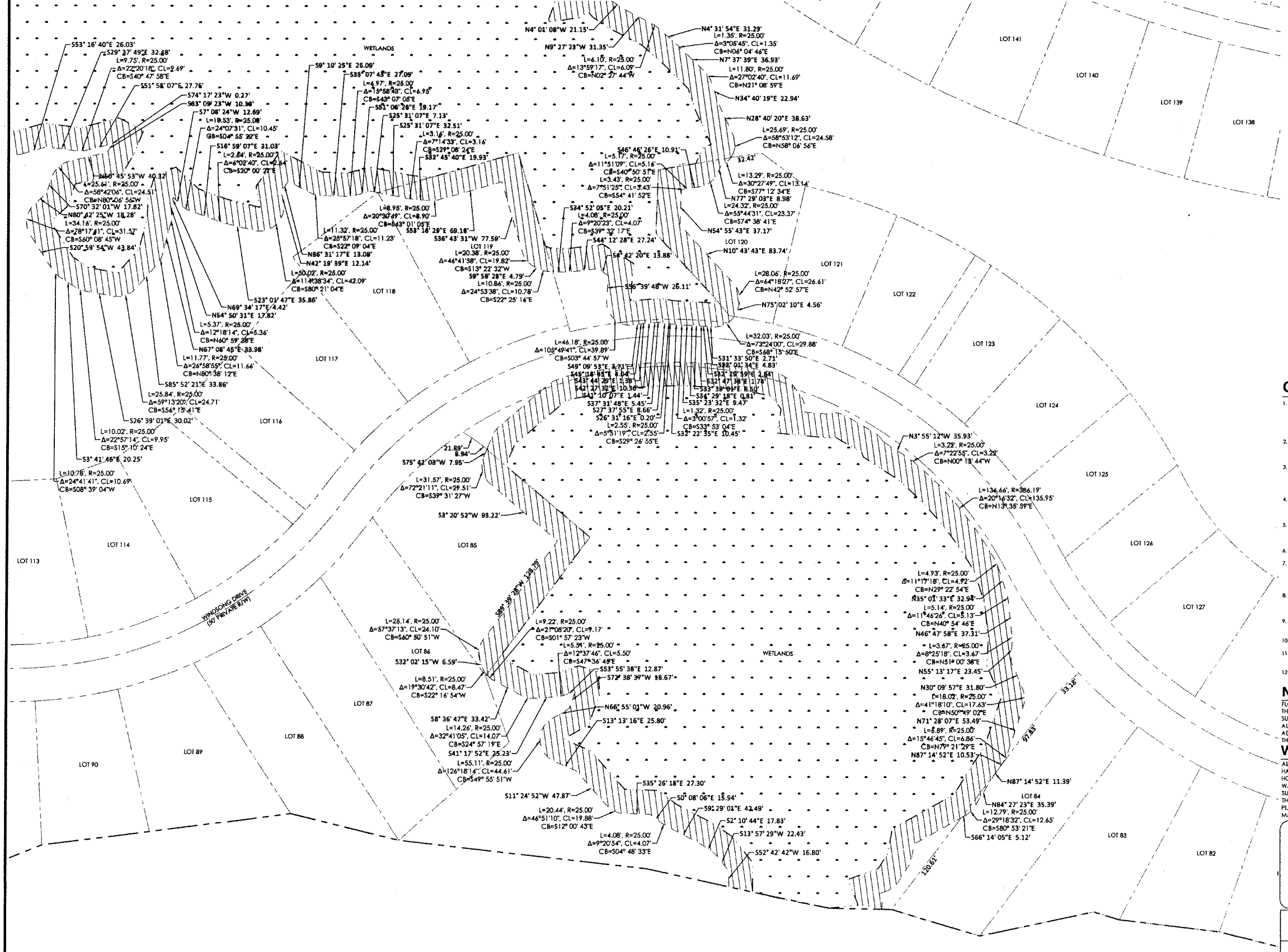
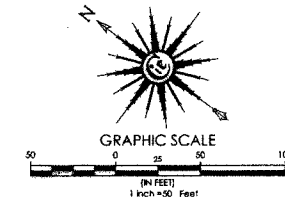
SITUATED IN SECTION 22, 23, 26, & 27 - TOWNSHIP 3 SOUTH - RANGE 18 WEST

WALTON COUNTY, FLORIDA

PLAT BOOK 24, PAGE 80

## SHEET INDEX:

- 1 - DEDICATIONS, CERTIFICATIONS, DESCRIPTION
- 2 - KEY SHEET
- 3 - BOUNDARY LOCATION INFORMATION
- 4 - BOUNDARY LOCATION INFORMATION
- 5 - BOUNDARY LOCATION INFORMATION
- 6 - BOUNDARY LOCATION INFORMATION
- 7 - BOUNDARY LOCATION INFORMATION
- 8 - LESS AND EXCEPT LOCATION INFORMATION
- 9 - WETLAND BUFFER LOCATION INFORMATION
- 10 - WETLAND BUFFER LOCATION INFORMATION
- 11 - WETLAND BUFFER LOCATION INFORMATION
- 12 - WETLAND BUFFER LOCATION INFORMATION



## LEGEND

- PERMANENT REFERENCE MONUMENT (PRM)  
SET 1/2" IRON PIN (PRM 7927)
- PERMANENT CONTROL POINT (PCP)  
SET NAIL & DISK (PCP 7927)
- FOUND 1" CAPPED IRON PIN (SSMC LB 2108)  
(STAMPED PRM)
- WETLANDS
- 25' WETLAND BUFFER

## ABBREVIATIONS

- R/W RIGHT-OF-WAY
- N NORTH
- S SOUTH
- E EAST
- W WEST
- LB LICENSED BUSINESS
- MFFE MINIMUM FINISHED FLOOR ELEVATION
- D DEGREES WHEN USED IN A BEARING OR ANGLE
- M MINUTES WHEN USED IN A BEARING OR ANGLE
- S SECONDS WHEN USED IN A BEARING OR ANGLE
- F FEET OR DECIMAL THEREOF WHEN USED IN A DIMENSION
- I INCHES WHEN USED IN A DIMENSION
- ± MORE OR LESS
- BSL BUILDING SETBACK LINE
- UTE UTILITY EASEMENT
- CL CHORD LENGTH
- CB CHORD BEARING
- BFE BASE FLOOD ELEVATION
- L ARC LENGTH

## GENERAL NOTES

- THIS PLAN IS BASED UPON A BOUNDARY SURVEY BY THIS FIRM AND WAS PREPARED IN ACCORDANCE WITH THE STANDARDS OF PRACTICE FOR PROFESSIONAL SURVEYORS AND MAPPERS AS DEFINED IN CHAPTER 53-17.051 OF THE FLORIDA ADMINISTRATIVE CODE AS SET FORTH BY THE FLORIDA BOARD OF PROFESSIONAL SURVEYORS AND MAPPERS PURSUANT TO SECTION 472.027 OF THE FLORIDA STATUTES.
- SOURCES OF INFORMATION RELEVANT TO THE PREPARATION OF THIS PLAN INCLUDES THE FOLLOWING: FIELD RECORDED MONUMENTATION AND DEEDS, PLATS AND OTHER DOCUMENTATION AS NOTED HEREON.
- THIS PLAN DOES NOT REFLECT RESEARCH BY INNERLIGHT ENGINEERING CORPORATION REGARDING TITLE OR EASEMENT. THERE MAY EXIST DEEDS OF RECORD, UNRECORDED DEEDS, PLATS, UNRECORDED PLATS, EASEMENTS, RIGHTS-OF-WAYS, OR OTHER INSTRUMENTS THAT MAY AFFECT THIS PARCEL.
- NORTH AND THE BEARINGS DEPICTED HEREON ARE BASED UPON THE STATE PLANE COORDINATE SYSTEM - FLORIDA NORTH ZONE, NORTH AMERICAN DATUM OF 1983 (NAD83) UTILIZING THE TRIMBLE ACCESS GPS NETWORK.
- NO UNDERGROUND INSTALLATIONS OR IMPROVEMENTS INCLUDING, BUT NOT LIMITED TO, UTILITIES, FOUNDATIONS, FOOTERS, HUMAN BURIAL SITES, AND CEMETERIES, WERE LOCATED, EXCEPT AS SHOWN.
- ALL LOT LINES DEPICTED HEREON ARE NON-RADIAL (N.R.) UNLESS OTHERWISE NOTED.
- FEDERAL EMERGENCY MANAGEMENT AGENCY (F.E.M.A.), FLOOD INSURANCE RATE MAP (F.I.R.M.) 121307014I, BENCH PANEL 714 OF 736, EFFECTIVE DATE OF DECEMBER 30, 2020, INDICATES THAT THE SUBJECT PARCEL IS LOCATED IN ZONES "X" AND "A"; NO CERTIFICATIONS ARE MADE REGARDING THE ACCURACY OF SAID F.I.R.M.
- BUILDING SETBACKS ARE AS FOLLOWS: FRONT: 10'; SIDE, S.E. SIDE (WITH DRAINAGE EASEMENT): 10'; REAR (ABUTTING OTHER LOTS): 10'; AND REAR (ABUTTING OPEN SPACE): 5' PER THE APPROVED DEVELOPMENT ORDER.
- ELEVATIONS SHOWN HEREON ARE BASED ON THE NORTH AMERICAN VERTICAL DATUM OF 1988 (NAVD 88), UTILIZING THE TRIMBLE ACCESS GPS NETWORK.
- WETLAND BUFFERS SHOWN HEREON ARE TO REMAIN INTACT, UNCLEARED AND UNDISTURBED.
- MINIMUM FINISHED FLOOR ELEVATIONS SHOWN HEREON ARE BASED ON A GRADING AND DRAINAGE PLAN PROVIDED BY EMLEY HORN DATED JULY OF 2019.
- BASE FLOOD ELEVATIONS SHOWN HEREON ARE BASED ON A FLOOD STUDY PREPARED BY EMLEY HORN DATED JANUARY OF 2019.

## NOTICE

FLORIDA STATUTE 177.091 (27)  
THIS PLAN, AS RECORDED IN ITS GRAPHIC FORM, IS THE OFFICIAL DEPICTION OF THE SUBDIVIDED LANDS DESCRIBED HEREIN AND WILL IN NO CIRCUMSTANCES BE SUPPLANTED IN AUTHORITY BY ANY OTHER GRAPHIC OR DIGITAL FORM OF THIS PLAN. THERE MAY BE ADDITIONAL RESTRICTIONS THAT ARE NOT RECORDED ON THIS PLAN THAT MAY BE FOUND IN THE PUBLIC RECORDS OF THIS COUNTY.

## WALTON COUNTY STATEMENT

ALL PUBLIC AREAS SHOWN ON THIS PLAN, UNLESS OTHERWISE STATED, SHALL BE DEEMED TO HAVE BEEN DEDICATED TO THE PUBLIC FOR THE USES AND PURPOSES HEREON STATED. HOWEVER, NOTHING HEREIN SHALL BE CONSTRUED AS CREATING AN OBLIGATION UPON WALTON COUNTY TO PERFORM ANY ACT OF CONSTRUCTION OR MAINTENANCE WITHIN SUCH DEDICATED AREAS, EXCEPT WHEN THE OBLIGATION IS VOLUNTARILY ACCEPTED BY THE GOVERNING BODY OF WALTON COUNTY, FLORIDA. THE MERE RECORDING OF THIS PLAN DOES NOT CONSTITUTE ACCEPTANCE FOR ANY ACT OF CONSTRUCTION OR MAINTENANCE.

**INNERLIGHT ENGINEERING CORPORATION**  
THE APPLIED SCIENCE OF SUCCESS  
11490 EMERALD COAST PARKWAY, SUITE 2W  
MIRAMAR BEACH | FLORIDA | 32550  
1.877.9927 | TELEPHONE: 850.424.5655

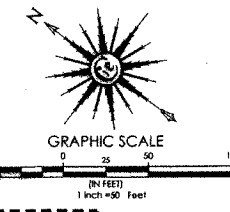


# WATERSOUND CAMP CREEK - PHASE 2B

## A PLANNED UNIT DEVELOPMENT

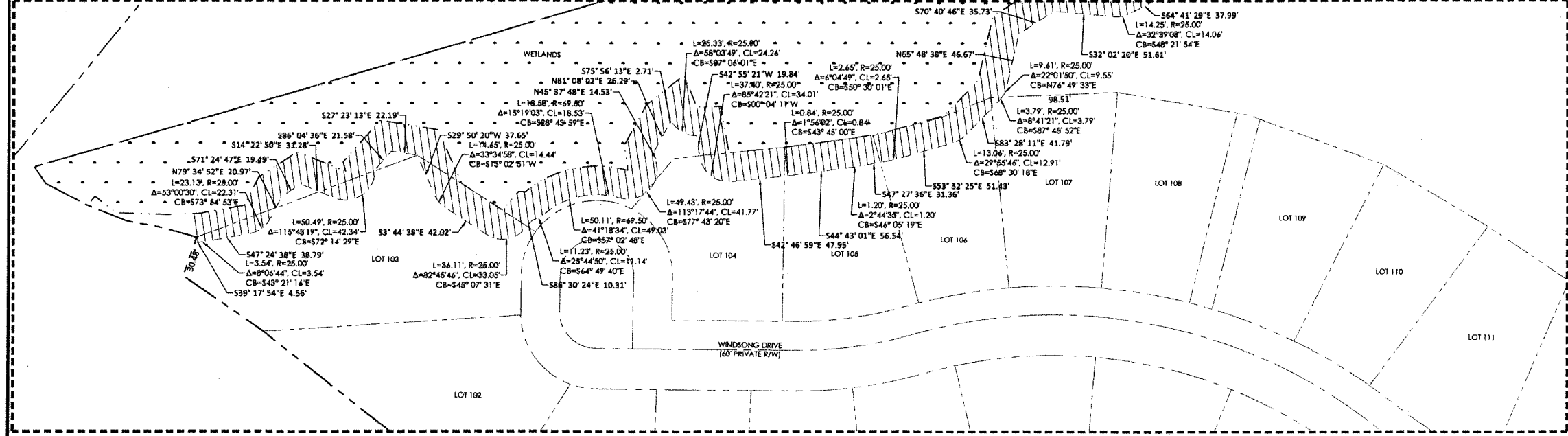
### SITUATED IN SECTION 22, 23, 26, & 27 - TOWNSHIP 3 SOUTH - RANGE 18 WEST

### WALTON COUNTY, FLORIDA



**SHEET INDEX:**

- 1 - KEY SHEET
- 2 - DEDICATIONS, CERTIFICATIONS, DESCRIPTION
- 3 - BOUNDARY LOCATION INFORMATION
- 4 - BOUNDARY LOCATION INFORMATION
- 5 - BOUNDARY LOCATION INFORMATION
- 6 - BOUNDARY LOCATION INFORMATION
- 7 - BOUNDARY LOCATION INFORMATION
- 8 - LESS AND EXCEPT LOCATION INFORMATION
- 9 - WETLAND BUFFER LOCATION INFORMATION
- 10 - WETLAND BUFFER LOCATION INFORMATION
- 11 - WETLAND BUFFER LOCATION INFORMATION
- 12 - WETLAND BUFFER LOCATION INFORMATION



### LEGEND

- PERMANENT REFERENCE MONUMENT (PRM)
- SET 1/2" IRON PIN (FRM 7927)
- PERMANENT CONTROL POINT (PCP)
- SET NAIL & DISK (PCP 7927)
- FOUND 1" CAPPED IRON PIN (SSMC LB 2108)
- (STAMPED PRM)
- WETLANDS
- 25' WETLAND BUFFER

### ABBREVIATIONS

- R/W RIGHT-OF-WAY
- N NORTH
- S SOUTH
- E EAST
- W WEST
- LB LICENSED BUSINESS
- MFFE MINIMUM FINISHED FLOOR ELEVATION
- DEGREES WHEN USED IN A BEARING OR ANGLE
- MINUTES WHEN USED IN A BEARING OR ANGLE
- SECONDS WHEN USED IN A BEARING OR ANGLE
- FEET OR DECIMAL THEREOF WHEN USED IN A DIMENSION
- INCHES WHEN USED IN A DIMENSION
- MORE OR LESS
- BSL BUILDING SETBACK LINE
- LTE UTILITY EASEMENT
- CL CHORD LENGTH
- CB CHORD BEARING
- BFE BASE FLOOD ELEVATION
- L ARC LENGTH

### GENERAL NOTES

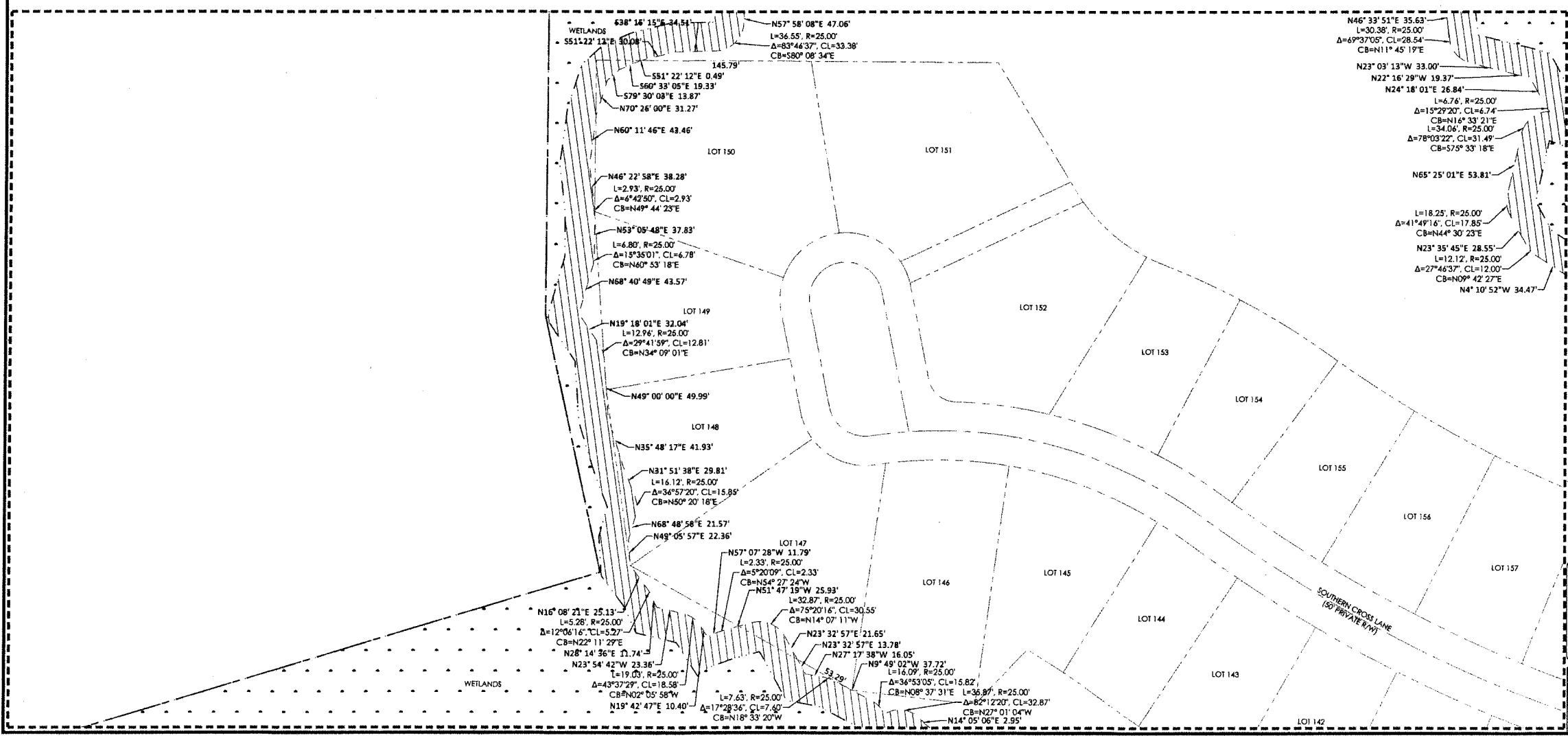
1. THIS PLAN IS BASED UPON A BOUNDARY SURVEY BY THIS FIRM AND WAS PREPARED IN ACCORDANCE WITH THE STANDARDS OF PRACTICE FOR PROFESSIONAL SURVEYORS AND MAPPERS AS DEFINED IN CHAPTER 55-17.051 OF THE FLORIDA ADMINISTRATIVE CODE AS SET FORTH BY THE FLORIDA BOARD OF PROFESSIONAL SURVEYORS AND MAPPERS PURSUANT TO SECTION 472.027 OF THE FLORIDA STATUTES.
2. SOURCES OF INFORMATION RELED UPON FOR THE PREPARATION OF THIS PLAN INCLUDES THE FOLLOWING: RECOVERED MONUMENTATION AND DEEDS, PLATS AND OTHER DOCUMENTATION AS NOTED HEREON.
3. THIS PLAN DOES NOT REFLECT RESEARCH BY INNERLIGHT ENGINEERING CORPORATION REGARDING TITLE OR EASEMENT. THERE MAY EXIST DEEDS OF RECORD, UNRECORDED DEEDS, PLATS, UNRECORDED DEEDS, EASEMENTS, RIGHTS-OF-WAYS, OR OTHER INSTRUMENTS THAT MAY AFFECT THIS PARCEL.
4. NORTH AND THE BEARINGS DEPICTED HEREON ARE BASED UPON THE STATE PLANE COORDINATE SYSTEM - FLORIDA NORTH ZONE, NORTH AMERICAN DATUM OF 1983 (NAD83) UTILIZING THE TRIMBLE ACCESS GPS NETWORK.
5. NO UNDERGROUND INSTALLATIONS OR IMPROVEMENTS INCLUDING, BUT NOT LIMITED TO, UTILITIES, FOUNDATIONS, FOOTERS, HUMAN BURIAL SITES, AND CEMETERIES, WERE LOCATED, EXCEPT AS SHOWN.
6. ALL LOT LINES DEPICTED HEREON ARE NON-RADIAL (N.R.) UNLESS OTHERWISE NOTED.
7. FEDERAL EMERGENCY MANAGEMENT AGENCY (FEMA), FLOOD INSURANCE RATE MAP (FIRM) 12191C0141, BRING PARCEL 714 OF 738, EFFECTIVE DATE OF DECEMBER 30, 2009, INDICATES THAT THE SUBJECT PARCEL IS LOCATED IN ZONES "X" AND "A". NO GUARANTEES ARE MADE REGARDING THE ACCURACY OF SAID FIRM.
8. BUILDING SETBACKS ARE AS FOLLOWS: FRONT: 10'; SIDE: 5' (WITH DRAINAGE EASEMENT); 10'; REAR (ABUTTING OTHER LOTS); 10'; AND REAR (ABUTTING OPEN SPACE): 5' PER THE APPROVED DEVELOPMENT ORDER.
9. ELEVATIONS SHOWN HEREON ARE BASED ON THE NORTH AMERICAN VERTICAL DATUM OF 1988 (NAVD 88) UTILIZING THE TRIMBLE ACCESS GPS NETWORK.
10. WETLAND BUFFERS SHOWN HEREON ARE TO REMAIN INTACT, UNCLEARED AND UNDISTURBED.
11. MINIMUM FINISHED FLOOR ELEVATIONS SHOWN HEREON ARE BASED ON A GRADING AND DRAINAGE PLAN PROVIDED BY KIMLEY HORN DATED JULY OF 2019.
12. BASE FLOOD ELEVATIONS SHOWN HEREON ARE BASED ON A FLOOD STUDY PREPARED BY KIMLEY HORN DATED JANUARY OF 2019.

### NOTICE

FLORIDA STATUTE 177.091 (27)  
 THIS PLAN, AS RECORDED IN ITS GRAPHIC FORM, IS THE OFFICIAL DEPICTION OF THE SUBDIVIDED LANDS DESCRIBED HEREIN AND WILL IN NO CIRCUMSTANCES BE SUPPLANTED IN AUTHORITY BY ANY OTHER GRAPHIC OR DIGITAL FORM OF THIS PLAN. THERE MAY BE ADDITIONAL RESTRICTIONS THAT ARE NOT RECORDED ON THIS PLAT THAT MAY BE FOUND IN THE PUBLIC RECORDS OF THIS COUNTY.

### WALTON COUNTY STATEMENT

ALL PUBLIC AREAS SHOWN ON THIS PLAT, UNLESS OTHERWISE STATED, SHALL BE DEEMED TO HAVE BEEN DEDICATED TO THE PUBLIC FOR THE USES AND PURPOSES HEREON SET FORTH. HOWEVER, NOTHING HEREIN SHALL BE CONSTRUED AS CREATING AN OBLIGATION UPON WALTON COUNTY TO PERFORM ANY ACT OF CONSTRUCTION OR MAINTENANCE WITHIN SUCH DEDICATED AREAS, EXCEPT WHEN THE OBLIGATION IS VOLUNTARILY ACCEPTED BY THE GOVERNING BODY OF WALTON COUNTY, FLORIDA. THE MERE RECORDING OF THIS PLAT DOES NOT CONSTITUTE ACCEPTANCE FOR ANY ACT OF CONSTRUCTION OR MAINTENANCE.



**INNERLIGHT ENGINEERING CORPORATION**  
 THE APPLIED SCIENCE OF SUCCESS  
 11490 EMERALD COAST PARKWAY, SUITE 2W  
 MIRAMAR BEACH | FLORIDA | 32550  
 LB#7927 | TELEPHONE: 850.424.5855

WATERSOUND CAMP CREEK - PHASE 2B

# WATERSOUND CAMP CREEK - PHASE 2B

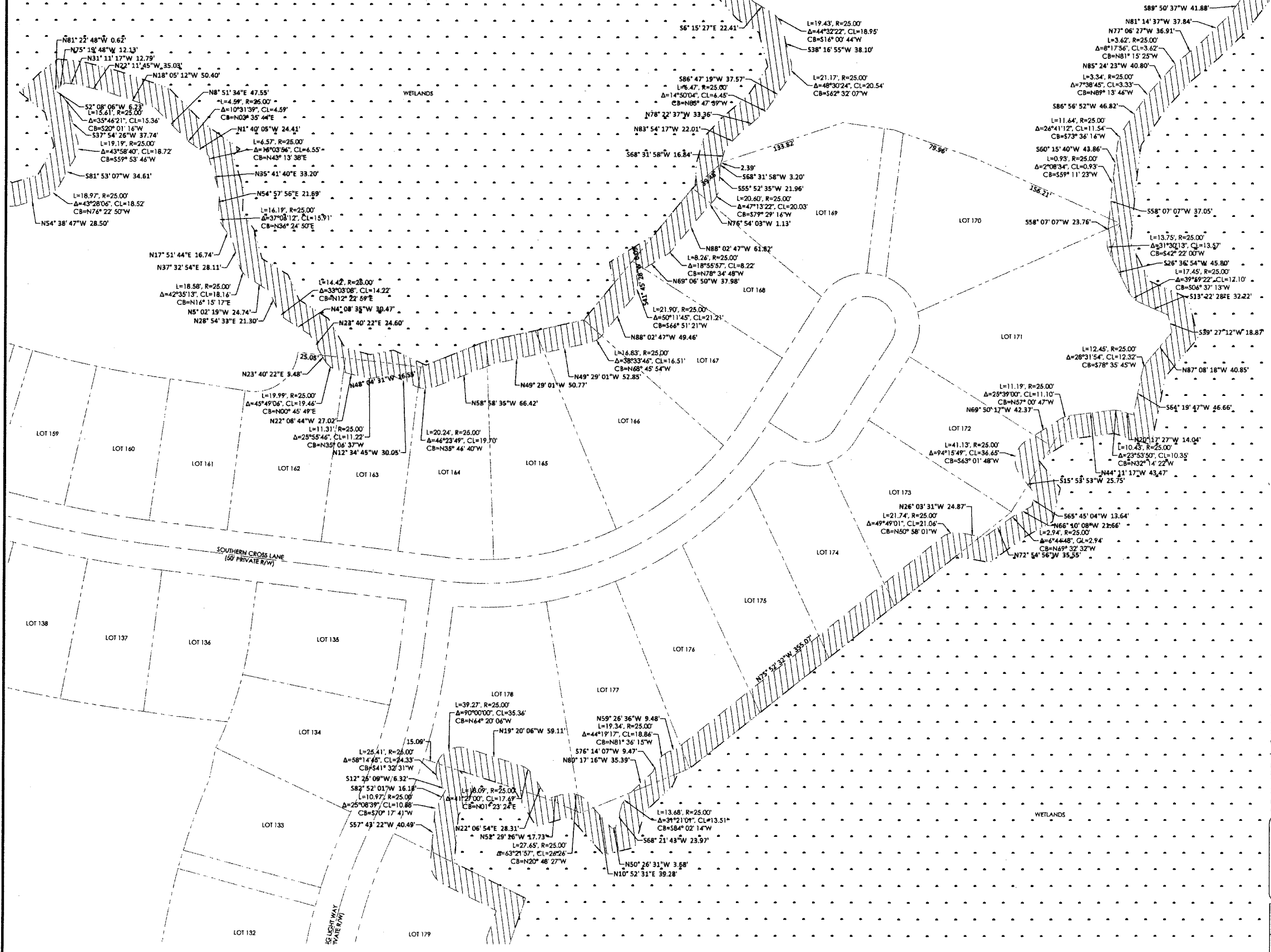
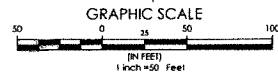
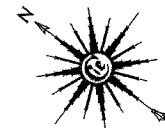
A PLANNED UNIT DEVELOPMENT

SITUATED IN SECTION 22, 23, 26, & 27 - TOWNSHIP 3 SOUTH - RANGE 18 WEST

WALTON COUNTY, FLORIDA

## SHEET INDEX:

- 1 - DEDICATIONS, CERTIFICATIONS, DESCRIPTION
- 2 - KEY SHEET
- 3 - BOUNDARY LOCATION INFORMATION
- 4 - BOUNDARY LOCATION INFORMATION
- 5 - BOUNDARY LOCATION INFORMATION
- 6 - BOUNDARY LOCATION INFORMATION
- 7 - BOUNDARY LOCATION INFORMATION
- 8 - LESS AND EXCEPT LOCATION INFORMATION
- 9 - WETLAND BUFFER LOCATION INFORMATION
- 10 - WETLAND BUFFER LOCATION INFORMATION
- 11 - WETLAND BUFFER LOCATION INFORMATION
- 12 - WETLAND BUFFER LOCATION INFORMATION



## LEGEND

- PERMANENT REFERENCE MONUMENT (PRM)  
SET 1/2" IRON PIN (PRM 7927)
- PERMANENT CONTROL POINT (PCP)  
SET 1/2" IRON PIN (PCP 7927)
- FOUND 1" CAPPED IRON PIN (SSMC LB 2108)  
(STAMPED PRM)
- WETLANDS
- 25' WETLAND BUFFER

## ABBREVIATIONS

- R/W RIGHT-OF-WAY
- N NORTH
- S SOUTH
- E EAST
- W WEST
- LB LICENSED BUSINESS
- MFFE MINIMUM FINISHED FLOOR ELEVATION
- DEGREES WHEN USED IN A BEARING OR ANGLE
- MINUTES WHEN USED IN A BEARING OR ANGLE
- SECONDS WHEN USED IN A BEARING OR ANGLE
- FEET OR DECIMAL THEREOF WHEN USED IN A DIMENSION
- INCHES WHEN USED IN A DIMENSION
- ± MORE OR LESS
- BSL BUILDING SETBACK LINE
- UTE UTILITY EASEMENT
- CL CHORD LENGTH
- CB CHORD BEARING
- BFE BASE FLOOD ELEVATION
- L ARC LENGTH

## GENERAL NOTES

1. THIS PLAN IS BASED UPON A BOUNDARY SURVEY BY THIS FIRM AND WAS PREPARED IN ACCORDANCE WITH THE STANDARDS OF PRACTICE FOR PROFESSIONAL SURVEYORS AND MAPPERS AS DEFINED IN CHAPTER 53-170.01 OF THE FLORIDA ADMINISTRATIVE CODE AS SET FORTH BY THE FLORIDA BOARD OF PROFESSIONAL SURVEYORS AND MAPPERS PURSUANT TO SECTION 472.007 OF THE FLORIDA STATUTES.
2. SOURCES OF INFORMATION RELIED UPON FOR THE PREPARATION OF THIS PLAN INCLUDES THE FOLLOWING: FIELD RECOVERED MONUMENTATION AND DEEDS, PLATS AND OTHER DOCUMENTATION AS NOTED HEREON.
3. THIS PLAN DOES NOT REFLECT RESEARCH BY INNERLIGHT ENGINEERING CORPORATION REGARDING TITLE OR EASEMENT. THERE MAY EXIST DEEDS OF RECORD, UNRECORDED DEEDS, PLATS, UNRECORDED PLATS, EASEMENTS, RIGHTS-OF-WAYS, OR OTHER INSTRUMENTS THAT MAY AFFECT THIS PARCEL.
4. NORTH AND THE BEARINGS DEPICTED HEREON ARE BASED UPON THE STATE PLANE COORDINATE SYSTEM - FLORIDA NORTH ZONE, NORTH AMERICAN DATUM OF 1983 (NAD83) UTILIZING THE TRIMBLE ACCESS GPS NETWORK.
5. NO UNDERGROUND INSTALLATIONS OR IMPROVEMENTS INCLUDING, BUT NOT LIMITED TO, UTILITIES, FOUNDATIONS, FOOTERS, HUMAN BURIAL SITES, AND CEMETERIES, WERE LOCATED, EXCEPT AS SHOWN.
6. ALL LOT LINES DEPICTED HEREON ARE NON-RADIAL (N.R.) UNLESS OTHERWISE NOTED.
7. FEDERAL EMERGENCY MANAGEMENT AGENCY (F.E.M.A.), FLOOD INSURANCE RATE MAP (F.I.R.M.) 12131C0218E, BEING PANEL 714 OF 728 EFFECTIVE DATE OF DECEMBER 30, 2020, INDICATES THAT THE SUBJECT PARCEL IS LOCATED IN ZONES "X" AND "A". NO CERTIFICATIONS ARE MADE REGARDING THE ACCURACY OF SAID F.I.R.M.
8. BUILDING SETBACKS ARE AS FOLLOWS: FRONT: 10'; SIDE: 5'; SIDE (WITH DRAINAGE EASEMENT): 10'; REAR (ABUTTING OTHER LOTS): 10'; AND REAR (ABUTTING OPEN SPACE): 5' PER THE APPROVED DEVELOPMENT ORDER.
9. ELEVATIONS SHOWN HEREON ARE BASED ON THE NORTH AMERICAN VERTICAL DATUM OF 1988 (NAVD 88), UTILIZING THE TRIMBLE ACCESS GPS NETWORK.
10. WETLAND BUFFERS SHOWN HEREON ARE TO REMAIN INTACT, UNCLEARED AND UNDISTURBED.
11. MINIMUM FINISHED FLOOR ELEVATIONS SHOWN HEREON ARE BASED ON A GRADING AND DRAINAGE PLAN PROVIDED BY KIMLEY HORN DATED JULY OF 2019.
12. BASE FLOOD ELEVATIONS SHOWN HEREON ARE BASED ON A FLOOD STUDY PREPARED BY KIMLEY HORN DATED JANUARY OF 2019.

## NOTICE

FLORIDA STATUTE 177.091 (27)  
THIS PLAN, AS RECORDED IN ITS GRAPHIC FORM, IS THE OFFICIAL DEPICTION OF THE SUBDIVIDED LANDS DESCRIBED HEREIN AND WILL IN NO CIRCUMSTANCES BE SUPPLANTED IN AUTHORITY BY ANY OTHER GRAPHIC OR DIGITAL FORM OF THIS PLAN. THERE MAY BE ADDITIONAL RESTRICTIONS THAT ARE NOT RECORDED ON THIS PLAN THAT MAY BE FOUND IN THE PUBLIC RECORDS OF THIS COUNTY.

## WALTON COUNTY STATEMENT

ALL PUBLIC AREAS SHOWN ON THIS PLAN, UNLESS OTHERWISE STATED, SHALL BE DEEMED TO HAVE BEEN DEDICATED TO THE PUBLIC FOR THE USES AND PURPOSES HEREON STATED. HOWEVER, NOTHING HEREIN SHALL BE CONSTRUED AS CREATING AN OBLIGATION UPON WALTON COUNTY TO PERFORM ANY ACT OF CONSTRUCTION OR MAINTENANCE WITHIN SUCH DEDICATED AREAS, EXCEPT WHEN THE OBLIGATION IS VOLUNTARILY ACCEPTED BY THE GOVERNING BODY OF WALTON COUNTY, FLORIDA. THE MERE RECORDING OF THIS PLAN DOES NOT CONSTITUTE ACCEPTANCE FOR ANY ACT OF CONSTRUCTION OR MAINTENANCE.

**INNERLIGHT ENGINEERING CORPORATION**  
 THINK SOLVE SERVE  
 THE APPLIED SCIENCE OF SUCCESS

11490 EMERALD COAST PARKWAY, SUITE 2W  
 MIRAMAR BEACH | FLORIDA | 32550  
 LB#7927 | TELEPHONE: 850.424.5835